

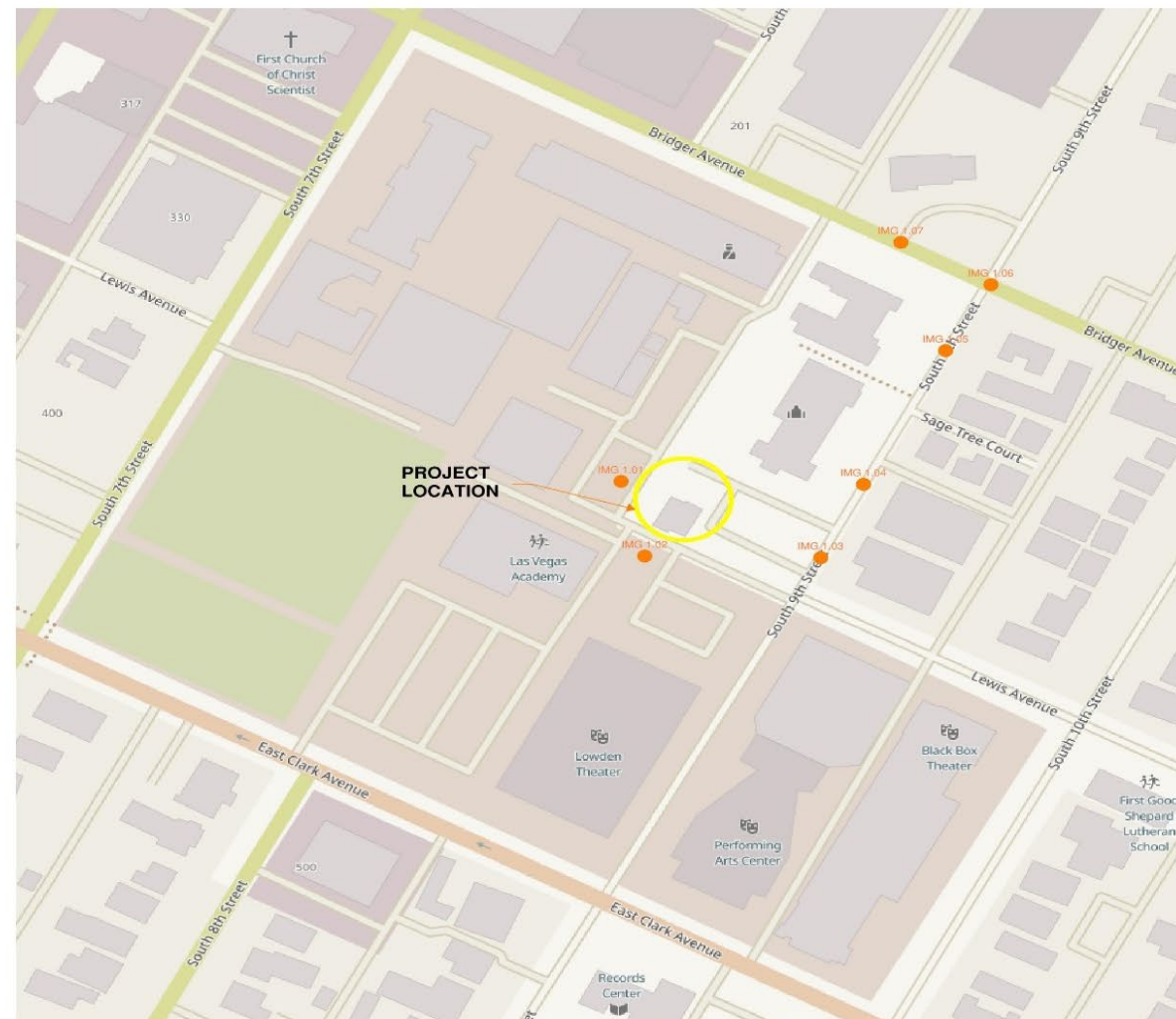
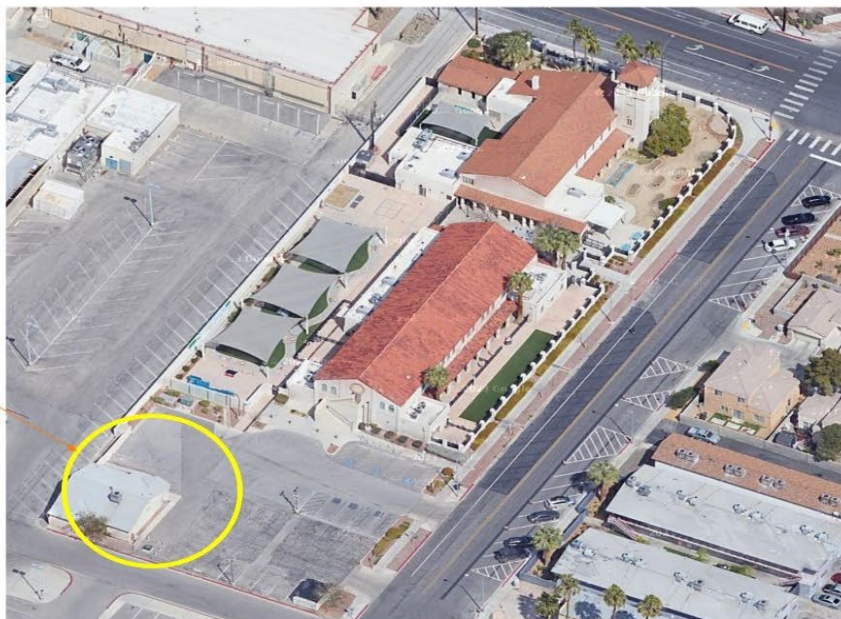
ITEM 48

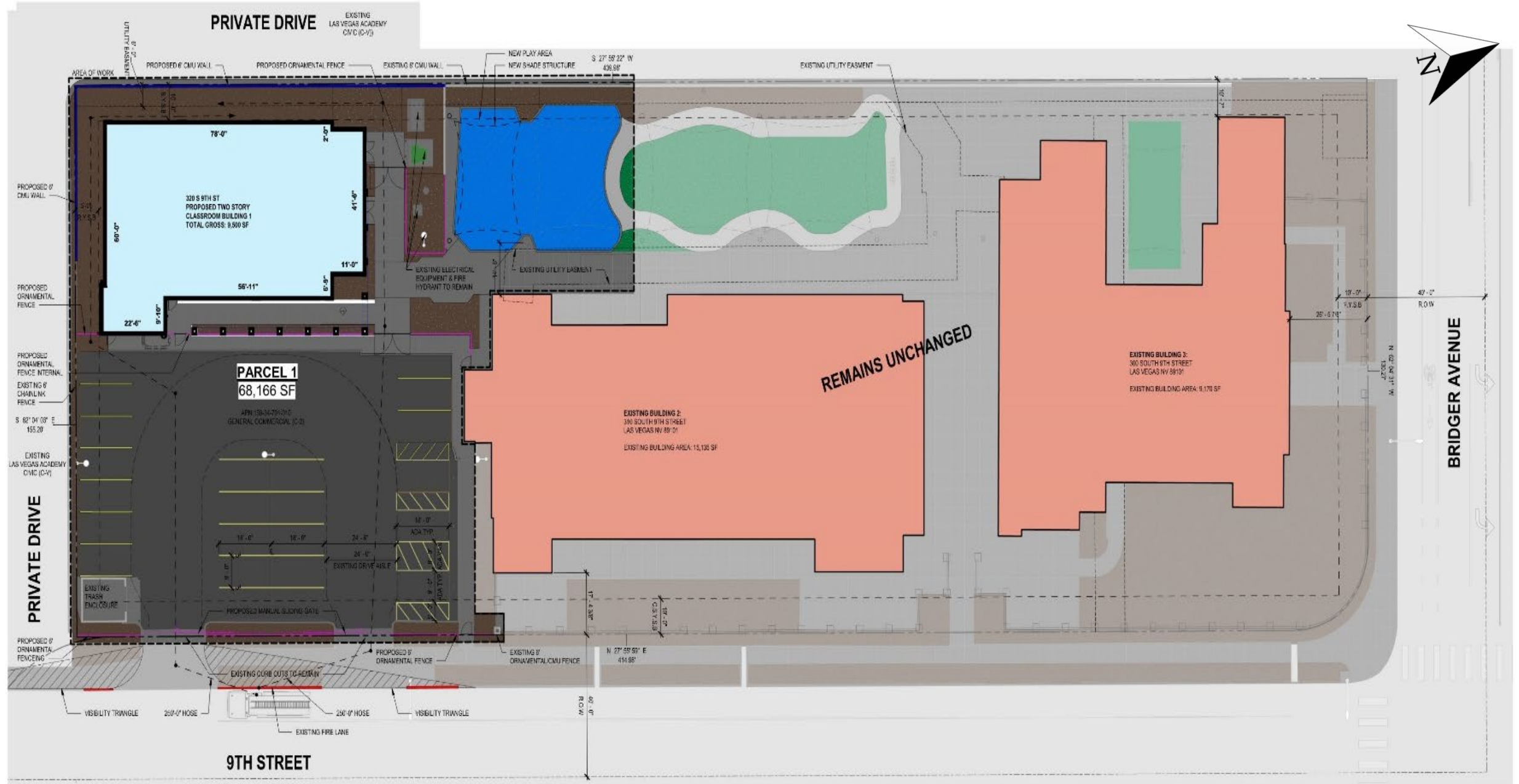
ADDITION TO EXISTING CHARTER PRIMARY SCHOOL (STRONG START ACADEMY ELEMENTARY SCHOOL AT 9TH/BRIDGER)

ROSA CORTEZ, CITY ENGINEER/DEPUTY DIRECTOR, PUBLIC WORKS
SEAN ROBINSON, ASSISTANT CITY TRAFFIC ENGINEER, PUBLIC WORKS

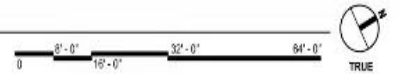
Submitted at Meeting
Date 3/20/2024 Item 48
by Staff







1 SITE PLAN - MASTER
SCALE: 1/16" = 1'-0"



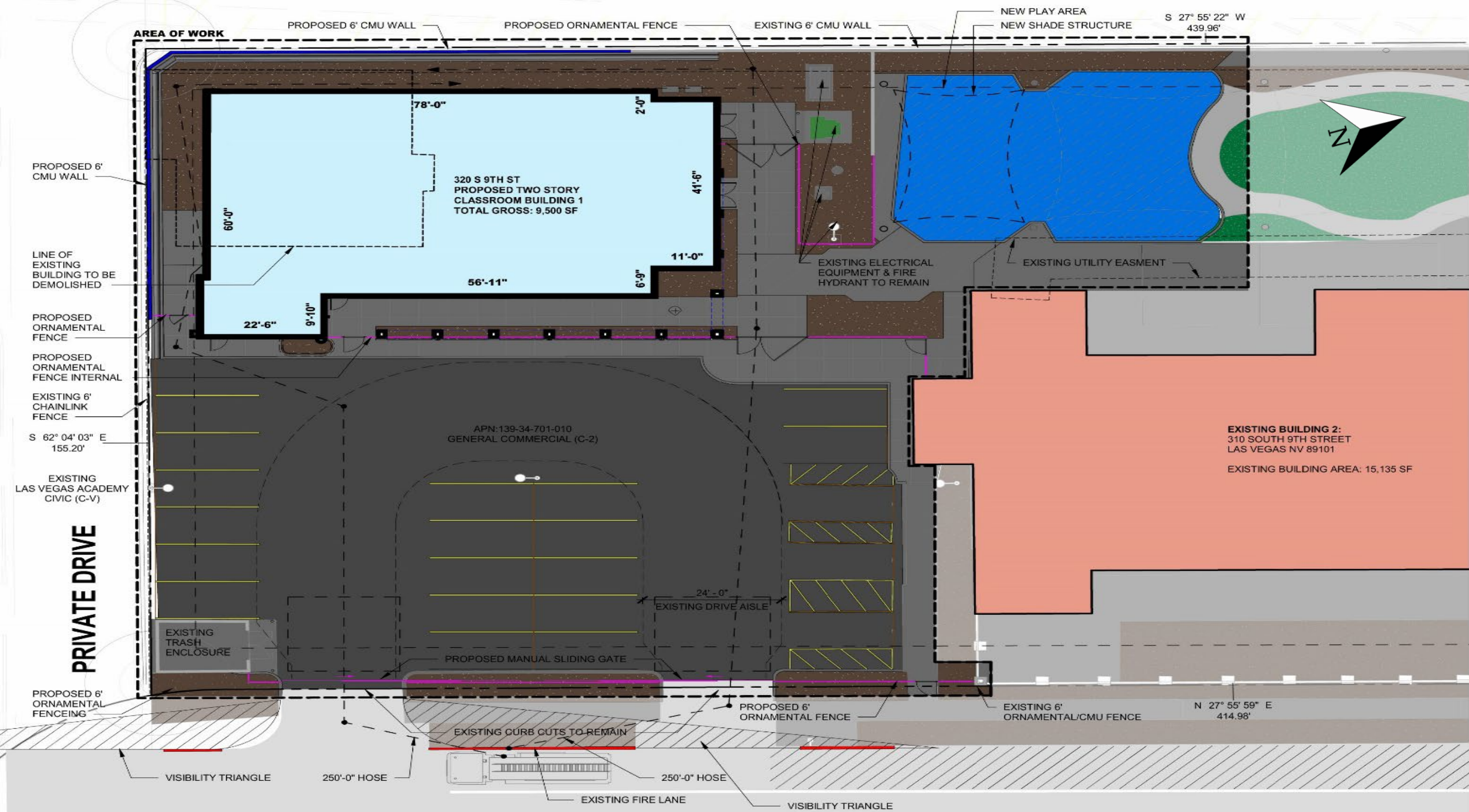




Image 3.1 Rendering of new Strong Start two story classroom Building 1.



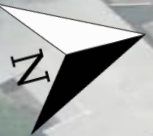
Image 3.2 Rendering of new Strong Start two story classroom Building 1.



Image 3.3 Rendering of new Strong Start two story classroom Building 1.



Image 3.4 Rendering of new Strong Start two story classroom Building 1.



STRONG START

9TH ST.

DROP OFF LANE
DROP OFF LANE
THRU-LANE

9
10
10

BRIDGER AVE.

24'

7'

THRU LANE

10TH STREET

ITEM 48

ADDITION TO EXISTING CHARTER PRIMARY SCHOOL (STRONG START ACADEMY ELEMENTARY SCHOOL AT 9TH/BRIDGER)

ROSA CORTEZ, CITY ENGINEER/DEPUTY DIRECTOR, PUBLIC WORKS
SEAN ROBINSON, ASSISTANT CITY TRAFFIC ENGINEER, PUBLIC WORKS

