



# DEPARTMENT OF PLANNING

## Application / Petition Form & Statement of Financial Interest

### Department Use

Case #
Meeting Date
Total Fee
Received By/Date

**Case Type** (Special Use Permit, Rezoning, Variance, Site Development Plan Review, etc) Site Development Plan Review

**Project Address** (Location) Symphony Park - Parcel E

**Project Name** Symphony Park, Parcel E - Red Ridge Development **Proposed Use** Mixed-use

**Assessor's Parcel #(s)** 139-34-110-007 **Ward #** \_\_\_\_\_

**General Plan:** Existing \_\_\_\_\_ Proposed X **Zoning:** Existing X Proposed \_\_\_\_\_

**Additional Information** \_\_\_\_\_

**Property Owner** City Parkway V, Inc. **Contact** Jorge Cervantes, President  
**Address** 495 S. Main Street, 6th Floor **City** Las Vegas **State** NV **Zip** 89101  
**E-mail** jcervantes@lasvegasnevada.gov **Phone** 702-229-6551

**Applicant** Red Ridge Development, LLC **Contact** Patrick Brennan  
**Address** 11357 Cedar Log ct **City** Las Vegas **State** NV **Zip** \_\_\_\_\_  
**E-mail** pbrennan@redridgedev.com **Phone** 702- 806-5733

**Representative** \_\_\_\_\_ **Contact** \_\_\_\_\_  
**Address** \_\_\_\_\_ **City** \_\_\_\_\_ **State** \_\_\_\_\_ **Zip** \_\_\_\_\_  
**E-mail** \_\_\_\_\_ **Phone** \_\_\_\_\_

To the best of your knowledge, does the Mayor or any member of the City Council or Planning Commission have any financial interest in this or any other property with the property owner, applicant, the property owner or applicant's general or limited partners, or an officer of their corporation or limited liability company? ☐ Yes ☒ No

If yes, please indicate the member of the City Council or Planning Commission who is involved and list the name(s) of the person or persons with whom the City Official holds an interest. Also list the Assessor's Parcel Number if the property in which the interest is held is different from the case parcel.

**City Official** \_\_\_\_\_ **Partner(s)** \_\_\_\_\_

**Partner(s)** \_\_\_\_\_

- I certify that I am the applicant and that the information submitted with this application is true and accurate to the best of my knowledge and belief. I understand that the City is not responsible for inaccuracies in information presented, and that inaccuracies, false information or incomplete application may cause the application to be rejected. I further certify that I am the owner or purchaser (or option holder) of the property involved in the application, or the lessee or agent fully authorized by the owner to make this submission, as indicated by the owner's signature below.
- Application will not be deemed complete until the submitted materials have been reviewed by Department of Planning for consistency with the Zoning Ordinance.

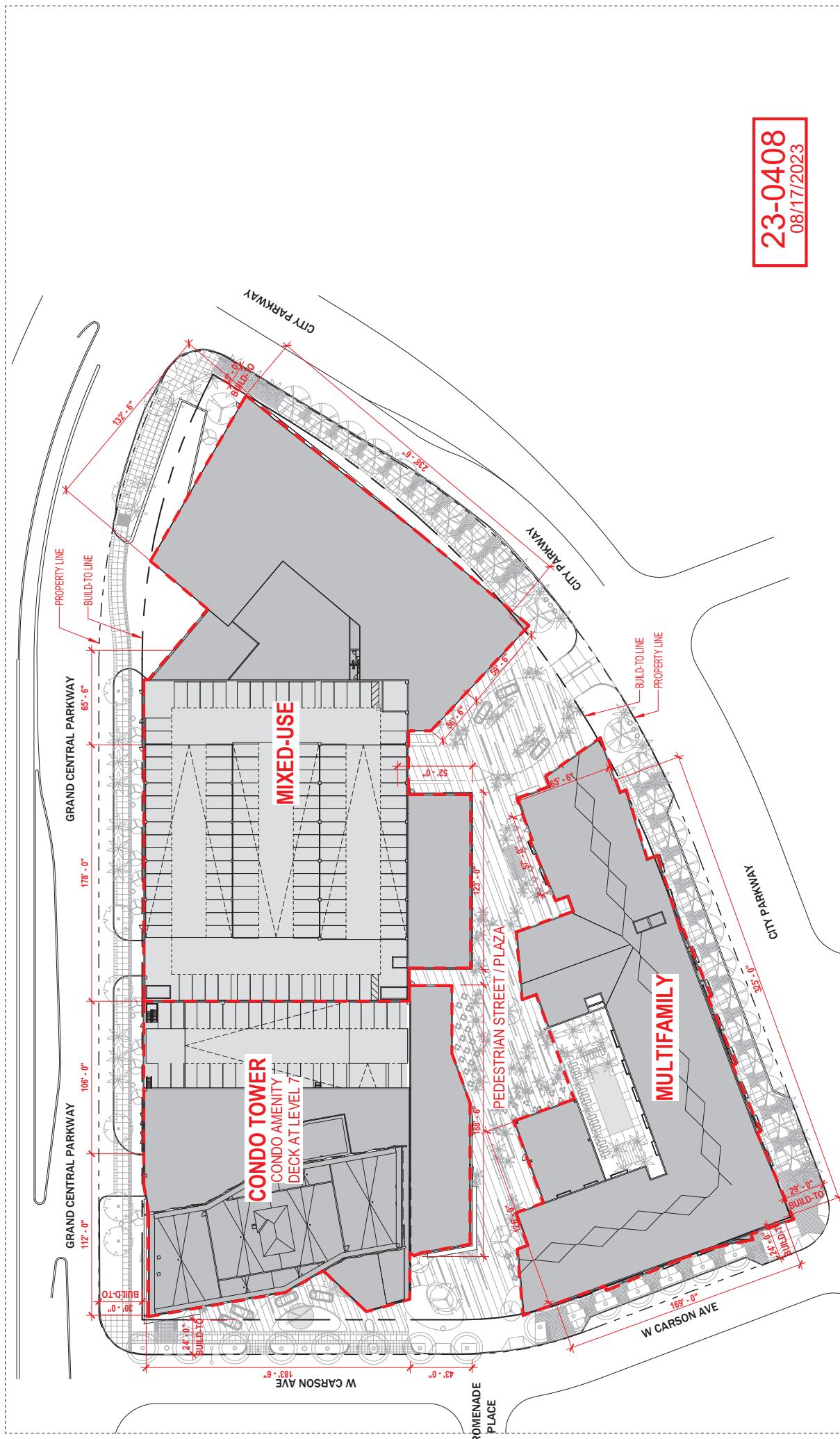
**Property Owner Signature** Jorge Cervantes  
 An authorized agent may sign in lieu of the property owner for Final Maps, Tentative Maps and Parcel Maps

**Print Name** JORGE CERVANTES

Subscribed and sworn before me  
 This 23rd day of August, 2023  
Sara Garcia

Notary Public in and for said County and State





23-0408  
08/17/2023

**A0.1 OVERALL SITE PLAN**  
93 S CITY PARKWAY LAS VEGAS, NV

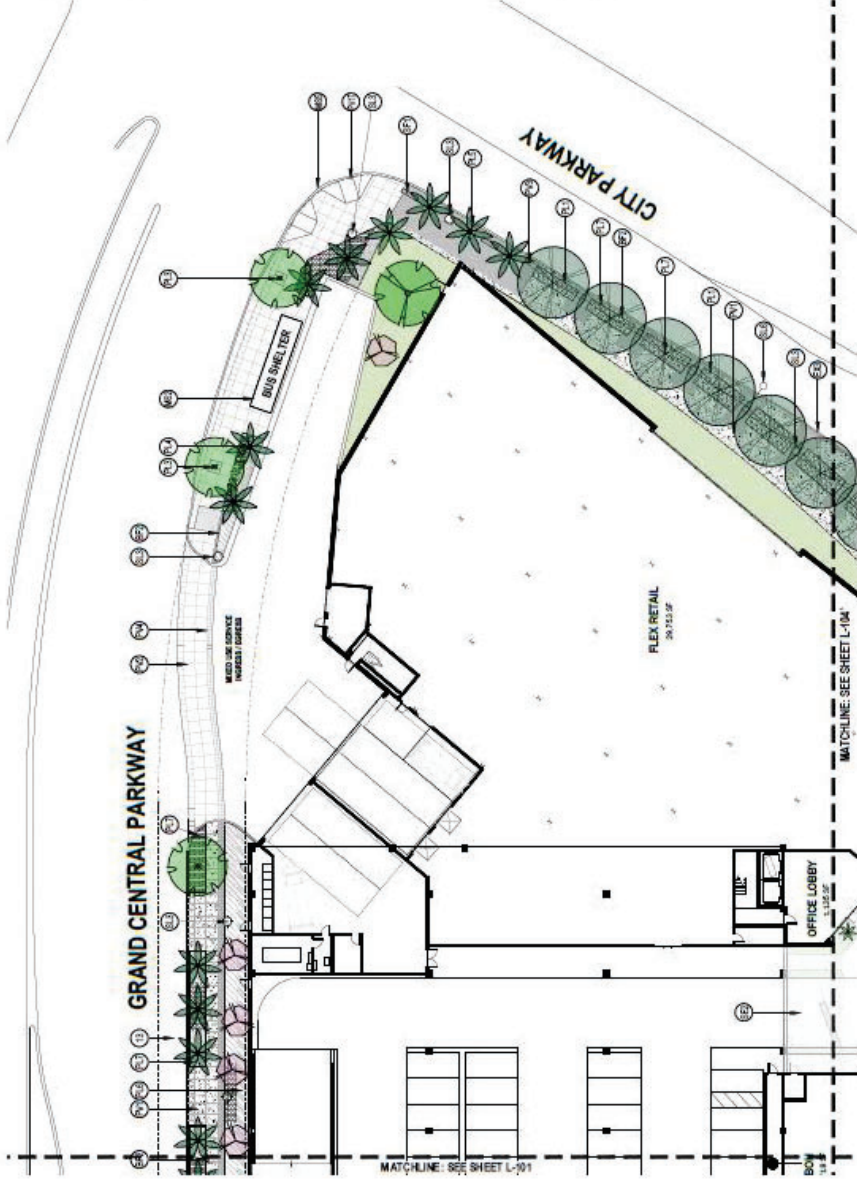












PLANT LEGEND	SYMBOL	COMMON NAME	SIZE	QTY.
TREES				
1. CACTUS	[Symbol]	CACTUS	4" DIA	16
2. CACTUS	[Symbol]	CACTUS	4" DIA	28
3. CACTUS	[Symbol]	CACTUS	4" DIA	03
4. CACTUS	[Symbol]	CACTUS	4" DIA	08
5. CACTUS	[Symbol]	CACTUS	4" DIA	02
6. CACTUS	[Symbol]	CACTUS	4" DIA	03
7. CACTUS	[Symbol]	CACTUS	4" DIA	14
8. CACTUS	[Symbol]	CACTUS	4" DIA	36
9. CACTUS	[Symbol]	CACTUS	4" DIA	80
10. CACTUS	[Symbol]	CACTUS	4" DIA	
11. CACTUS	[Symbol]	CACTUS	4" DIA	
12. CACTUS	[Symbol]	CACTUS	4" DIA	
13. CACTUS	[Symbol]	CACTUS	4" DIA	
14. CACTUS	[Symbol]	CACTUS	4" DIA	
15. CACTUS	[Symbol]	CACTUS	4" DIA	
16. CACTUS	[Symbol]	CACTUS	4" DIA	
17. CACTUS	[Symbol]	CACTUS	4" DIA	
18. CACTUS	[Symbol]	CACTUS	4" DIA	
19. CACTUS	[Symbol]	CACTUS	4" DIA	
20. CACTUS	[Symbol]	CACTUS	4" DIA	
21. CACTUS	[Symbol]	CACTUS	4" DIA	
22. CACTUS	[Symbol]	CACTUS	4" DIA	
23. CACTUS	[Symbol]	CACTUS	4" DIA	
24. CACTUS	[Symbol]	CACTUS	4" DIA	
25. CACTUS	[Symbol]	CACTUS	4" DIA	
26. CACTUS	[Symbol]	CACTUS	4" DIA	
27. CACTUS	[Symbol]	CACTUS	4" DIA	
28. CACTUS	[Symbol]	CACTUS	4" DIA	
29. CACTUS	[Symbol]	CACTUS	4" DIA	
30. CACTUS	[Symbol]	CACTUS	4" DIA	
31. CACTUS	[Symbol]	CACTUS	4" DIA	
32. CACTUS	[Symbol]	CACTUS	4" DIA	
33. CACTUS	[Symbol]	CACTUS	4" DIA	
34. CACTUS	[Symbol]	CACTUS	4" DIA	
35. CACTUS	[Symbol]	CACTUS	4" DIA	
36. CACTUS	[Symbol]	CACTUS	4" DIA	
37. CACTUS	[Symbol]	CACTUS	4" DIA	
38. CACTUS	[Symbol]	CACTUS	4" DIA	
39. CACTUS	[Symbol]	CACTUS	4" DIA	
40. CACTUS	[Symbol]	CACTUS	4" DIA	
41. CACTUS	[Symbol]	CACTUS	4" DIA	
42. CACTUS	[Symbol]	CACTUS	4" DIA	
43. CACTUS	[Symbol]	CACTUS	4" DIA	
44. CACTUS	[Symbol]	CACTUS	4" DIA	
45. CACTUS	[Symbol]	CACTUS	4" DIA	
46. CACTUS	[Symbol]	CACTUS	4" DIA	
47. CACTUS	[Symbol]	CACTUS	4" DIA	
48. CACTUS	[Symbol]	CACTUS	4" DIA	
49. CACTUS	[Symbol]	CACTUS	4" DIA	
50. CACTUS	[Symbol]	CACTUS	4" DIA	
51. CACTUS	[Symbol]	CACTUS	4" DIA	
52. CACTUS	[Symbol]	CACTUS	4" DIA	
53. CACTUS	[Symbol]	CACTUS	4" DIA	
54. CACTUS	[Symbol]	CACTUS	4" DIA	
55. CACTUS	[Symbol]	CACTUS	4" DIA	
56. CACTUS	[Symbol]	CACTUS	4" DIA	
57. CACTUS	[Symbol]	CACTUS	4" DIA	
58. CACTUS	[Symbol]	CACTUS	4" DIA	
59. CACTUS	[Symbol]	CACTUS	4" DIA	
60. CACTUS	[Symbol]	CACTUS	4" DIA	
61. CACTUS	[Symbol]	CACTUS	4" DIA	
62. CACTUS	[Symbol]	CACTUS	4" DIA	
63. CACTUS	[Symbol]	CACTUS	4" DIA	
64. CACTUS	[Symbol]	CACTUS	4" DIA	
65. CACTUS	[Symbol]	CACTUS	4" DIA	
66. CACTUS	[Symbol]	CACTUS	4" DIA	
67. CACTUS	[Symbol]	CACTUS	4" DIA	
68. CACTUS	[Symbol]	CACTUS	4" DIA	
69. CACTUS	[Symbol]	CACTUS	4" DIA	
70. CACTUS	[Symbol]	CACTUS	4" DIA	
71. CACTUS	[Symbol]	CACTUS	4" DIA	
72. CACTUS	[Symbol]	CACTUS	4" DIA	
73. CACTUS	[Symbol]	CACTUS	4" DIA	
74. CACTUS	[Symbol]	CACTUS	4" DIA	
75. CACTUS	[Symbol]	CACTUS	4" DIA	
76. CACTUS	[Symbol]	CACTUS	4" DIA	
77. CACTUS	[Symbol]	CACTUS	4" DIA	
78. CACTUS	[Symbol]	CACTUS	4" DIA	
79. CACTUS	[Symbol]	CACTUS	4" DIA	
80. CACTUS	[Symbol]	CACTUS	4" DIA	
81. CACTUS	[Symbol]	CACTUS	4" DIA	
82. CACTUS	[Symbol]	CACTUS	4" DIA	
83. CACTUS	[Symbol]	CACTUS	4" DIA	
84. CACTUS	[Symbol]	CACTUS	4" DIA	
85. CACTUS	[Symbol]	CACTUS	4" DIA	
86. CACTUS	[Symbol]	CACTUS	4" DIA	
87. CACTUS	[Symbol]	CACTUS	4" DIA	
88. CACTUS	[Symbol]	CACTUS	4" DIA	
89. CACTUS	[Symbol]	CACTUS	4" DIA	
90. CACTUS	[Symbol]	CACTUS	4" DIA	
91. CACTUS	[Symbol]	CACTUS	4" DIA	
92. CACTUS	[Symbol]	CACTUS	4" DIA	
93. CACTUS	[Symbol]	CACTUS	4" DIA	
94. CACTUS	[Symbol]	CACTUS	4" DIA	
95. CACTUS	[Symbol]	CACTUS	4" DIA	
96. CACTUS	[Symbol]	CACTUS	4" DIA	
97. CACTUS	[Symbol]	CACTUS	4" DIA	
98. CACTUS	[Symbol]	CACTUS	4" DIA	
99. CACTUS	[Symbol]	CACTUS	4" DIA	
100. CACTUS	[Symbol]	CACTUS	4" DIA	

L-102 PARTIAL LANDSCAPE SITE PLAN  
SYMPHONY PARK PARCEL E

EXISTING CONDITIONS	LOCATION
EXIST. UTILITY OF OTHER STRUCTURE	NA
EXIST. TRAFFIC SIGNAL	NA
EXIST. CORNER LOT	NA
EXIST. APPROX. PARKING	NA

PAVEMENT, CURBS, AND RAMP	LOCATION
PV1. C&T IN PLACE CONCRETE AT PEDESTRIAN AREA	DESIGN OF ANDRUS PAGE 10
PV2. C&T IN PLACE CONCRETE AT PRIVATE VEHICULAR AREA	SEE CIVIL DOCUMENTS
PV3. CONCRETE UNIT PAVEMENT AT PEDESTRIAN AREA	DESIGN OF ANDRUS PAGE 10
PV4. CONCRETE UNIT PAVEMENT AT PEDESTRIAN VEHICULAR AREA	SEE CIVIL DOCUMENTS
PV5. STONE PAVEMENT AT PEDESTRIAN AREA	DESIGN OF ANDRUS PAGE 11
PV6. NOT USED	NA
PV7. NOT USED	NA
PV8. POTENTIAL POOL TREATMENT AT PUBLIC INTERSECTION	SUBJECT TO FUTURE CITY DECISION
PV9. NOT USED	NA
PV10. NOT USED	NA
PV11. SPILL CURB	SEE CIVIL DOCUMENTS
PV12. GUTTER FIN	SEE CIVIL DOCUMENTS
PV13. POTENTIAL DRIVEWAY / DRIVE CUT	SEE CIVIL DOCUMENTS
PV14. 12" CONCRETE ACCESS DRIVE	ILLUSTRATED IN PL 1
PV15. 24" CONCRETE BUFFER STRIP	ILLUSTRATED IN PL 1
PV16. ACCESSIBLE RAMP A	SEE CIVIL DOCUMENTS
PV17. ACCESSIBLE RAMP B	SEE CIVIL DOCUMENTS
PV18. SPECIAL APPLIC. FINING AT VEHICULAR AREA	SUBJECT TO FUTURE CITY DECISION
PV19. STONE MASON	DESIGN OF ANDRUS PAGE 14
PV20. TREE GRATE A	DESIGN OF ANDRUS PAGE 14
PV21. TREE GRATE B	DESIGN OF ANDRUS PAGE 15

LANDSCAPING	LOCATION
L1. SWAN CONTROL JOINT	DESIGN OF ANDRUS PAGE 15
L2. EXPANSION JOINT	DESIGN OF ANDRUS PAGE 15
L3. SITE WALLS / EMBANKMENTS	LOCATION
L4. C&T IN PLACE CONCRETE SEAT WALL	DESIGN OF ANDRUS PAGE 16
L5. PROJECT FINISH	LOCATION
L6. NOT USED	NA
L7. NOT USED	NA
L8. MOBILE TABLES AND CHAIRS	DESIGN OF ANDRUS PAGE 18
L9. NOT USED	NA
L10. TANGI RECEPTACLE	DESIGN OF ANDRUS PAGE 18
L11. DRINK FOUNTAIN	DESIGN OF ANDRUS PAGE 19
L12. BICYCLE RACK	DESIGN OF ANDRUS PAGE 19
L13. BICYCLE RACK	DESIGN OF ANDRUS PAGE 19
L14. BICYCLE RACK	DESIGN OF ANDRUS PAGE 19
L15. PLANTING BOX	DESIGN OF ANDRUS PAGE 19
L16. PLANTING BOX	DESIGN OF ANDRUS PAGE 19
L17. PLANTING BOX	DESIGN OF ANDRUS PAGE 19
L18. BOLLARD	DESIGN OF ANDRUS PAGE 19

SITE LIGHTING	LOCATION
S1. PERSIMMON LIGHT	REFER TO SHEET L-101
S2. UP LIGHT	REFER TO SHEET L-101
S3. DOWN LIGHT	REFER TO SHEET L-101
S4. DOWN LIGHT	REFER TO SHEET L-101
S5. STREET LIGHT	NA
S6. STREET LIGHT - PHASE 2 - PROPOSED LOCATION	NA

PLANTING AND LANDSCAPE	LOCATION
PL1. STREET TREE IN LANDSCAPE PANEL	DESIGN OF ANDRUS PAGE 12
PL2. STREET TREE IN LANDSCAPE PANEL	DESIGN OF ANDRUS PAGE 12
PL3. STREET TREE IN LANDSCAPE PANEL	DESIGN OF ANDRUS PAGE 12
PL4. PALM IN LANDSCAPE	DESIGN OF ANDRUS PAGE 12
PL5. PALM IN TREE GRATE	DESIGN OF ANDRUS PAGE 12
PL6. GROUND COVER PLANTING	SEE SHEET L-101
PL7. LANDSCAPE PANEL PLANTING	DESIGN OF ANDRUS PAGE 12
PL8. TREE TRUNK	DESIGN OF ANDRUS PAGE 12
PL9. PALM IN TREE GRATE	DESIGN OF ANDRUS PAGE 12

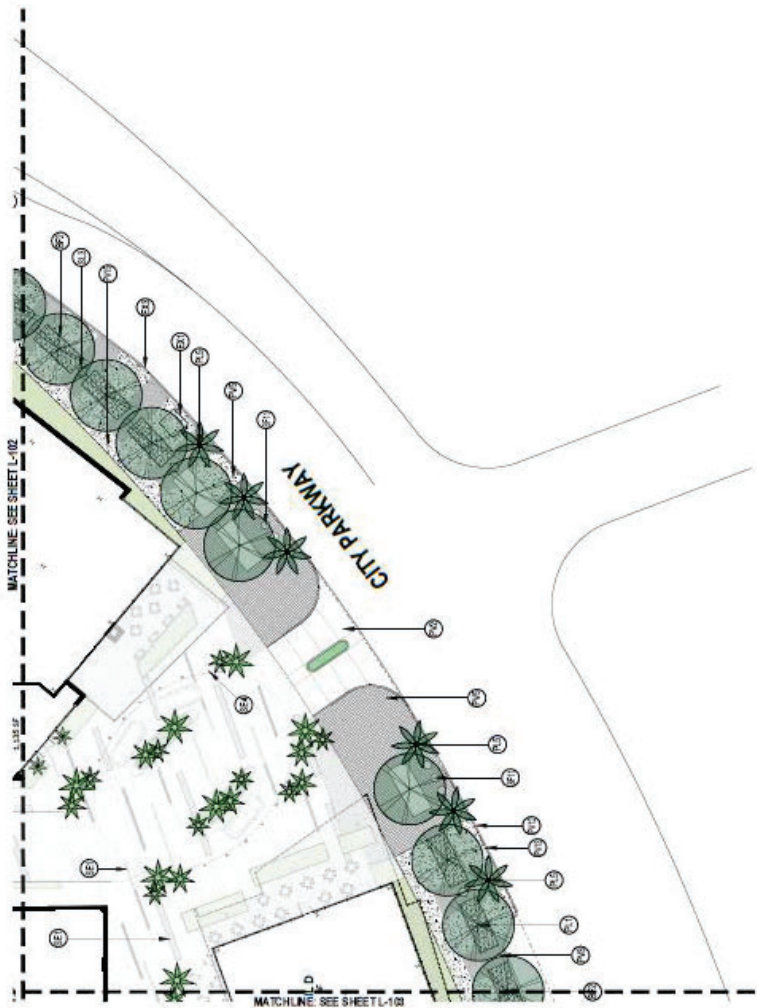
  

BARBERS AND FENCING	LOCATION
B1. GREEN SCREEN	DESIGN OF ANDRUS PAGE 12
B2. LANDSCAPE PANEL BARBERS A	DESIGN OF ANDRUS PAGE 12
B3. LANDSCAPE PANEL BARBERS B	DESIGN OF ANDRUS PAGE 12









PLANT LEGEND	SYM.	COMMON NAME	SIZE	QTY.
TREES				
1	SYMBOL	COAST REDWOOD	4" CAL.	16
2	SYMBOL	COAST REDWOOD	4" CAL.	16
3	SYMBOL	COAST REDWOOD	4" CAL.	16
4	SYMBOL	COAST REDWOOD	4" CAL.	16
5	SYMBOL	COAST REDWOOD	4" CAL.	16
6	SYMBOL	COAST REDWOOD	4" CAL.	16
7	SYMBOL	COAST REDWOOD	4" CAL.	16
8	SYMBOL	COAST REDWOOD	4" CAL.	16
9	SYMBOL	COAST REDWOOD	4" CAL.	16
10	SYMBOL	COAST REDWOOD	4" CAL.	16
11	SYMBOL	COAST REDWOOD	4" CAL.	16
12	SYMBOL	COAST REDWOOD	4" CAL.	16
13	SYMBOL	COAST REDWOOD	4" CAL.	16
14	SYMBOL	COAST REDWOOD	4" CAL.	16
15	SYMBOL	COAST REDWOOD	4" CAL.	16
16	SYMBOL	COAST REDWOOD	4" CAL.	16
17	SYMBOL	COAST REDWOOD	4" CAL.	16
18	SYMBOL	COAST REDWOOD	4" CAL.	16
19	SYMBOL	COAST REDWOOD	4" CAL.	16
20	SYMBOL	COAST REDWOOD	4" CAL.	16
21	SYMBOL	COAST REDWOOD	4" CAL.	16
22	SYMBOL	COAST REDWOOD	4" CAL.	16
23	SYMBOL	COAST REDWOOD	4" CAL.	16
24	SYMBOL	COAST REDWOOD	4" CAL.	16
25	SYMBOL	COAST REDWOOD	4" CAL.	16
26	SYMBOL	COAST REDWOOD	4" CAL.	16
27	SYMBOL	COAST REDWOOD	4" CAL.	16
28	SYMBOL	COAST REDWOOD	4" CAL.	16
29	SYMBOL	COAST REDWOOD	4" CAL.	16
30	SYMBOL	COAST REDWOOD	4" CAL.	16
31	SYMBOL	COAST REDWOOD	4" CAL.	16
32	SYMBOL	COAST REDWOOD	4" CAL.	16
33	SYMBOL	COAST REDWOOD	4" CAL.	16
34	SYMBOL	COAST REDWOOD	4" CAL.	16
35	SYMBOL	COAST REDWOOD	4" CAL.	16
36	SYMBOL	COAST REDWOOD	4" CAL.	16
37	SYMBOL	COAST REDWOOD	4" CAL.	16
38	SYMBOL	COAST REDWOOD	4" CAL.	16
39	SYMBOL	COAST REDWOOD	4" CAL.	16
40	SYMBOL	COAST REDWOOD	4" CAL.	16
41	SYMBOL	COAST REDWOOD	4" CAL.	16
42	SYMBOL	COAST REDWOOD	4" CAL.	16
43	SYMBOL	COAST REDWOOD	4" CAL.	16
44	SYMBOL	COAST REDWOOD	4" CAL.	16
45	SYMBOL	COAST REDWOOD	4" CAL.	16
46	SYMBOL	COAST REDWOOD	4" CAL.	16
47	SYMBOL	COAST REDWOOD	4" CAL.	16
48	SYMBOL	COAST REDWOOD	4" CAL.	16
49	SYMBOL	COAST REDWOOD	4" CAL.	16
50	SYMBOL	COAST REDWOOD	4" CAL.	16
51	SYMBOL	COAST REDWOOD	4" CAL.	16
52	SYMBOL	COAST REDWOOD	4" CAL.	16
53	SYMBOL	COAST REDWOOD	4" CAL.	16
54	SYMBOL	COAST REDWOOD	4" CAL.	16
55	SYMBOL	COAST REDWOOD	4" CAL.	16
56	SYMBOL	COAST REDWOOD	4" CAL.	16
57	SYMBOL	COAST REDWOOD	4" CAL.	16
58	SYMBOL	COAST REDWOOD	4" CAL.	16
59	SYMBOL	COAST REDWOOD	4" CAL.	16
60	SYMBOL	COAST REDWOOD	4" CAL.	16
61	SYMBOL	COAST REDWOOD	4" CAL.	16
62	SYMBOL	COAST REDWOOD	4" CAL.	16
63	SYMBOL	COAST REDWOOD	4" CAL.	16
64	SYMBOL	COAST REDWOOD	4" CAL.	16
65	SYMBOL	COAST REDWOOD	4" CAL.	16
66	SYMBOL	COAST REDWOOD	4" CAL.	16
67	SYMBOL	COAST REDWOOD	4" CAL.	16
68	SYMBOL	COAST REDWOOD	4" CAL.	16
69	SYMBOL	COAST REDWOOD	4" CAL.	16
70	SYMBOL	COAST REDWOOD	4" CAL.	16
71	SYMBOL	COAST REDWOOD	4" CAL.	16
72	SYMBOL	COAST REDWOOD	4" CAL.	16
73	SYMBOL	COAST REDWOOD	4" CAL.	16
74	SYMBOL	COAST REDWOOD	4" CAL.	16
75	SYMBOL	COAST REDWOOD	4" CAL.	16
76	SYMBOL	COAST REDWOOD	4" CAL.	16
77	SYMBOL	COAST REDWOOD	4" CAL.	16
78	SYMBOL	COAST REDWOOD	4" CAL.	16
79	SYMBOL	COAST REDWOOD	4" CAL.	16
80	SYMBOL	COAST REDWOOD	4" CAL.	16
81	SYMBOL	COAST REDWOOD	4" CAL.	16
82	SYMBOL	COAST REDWOOD	4" CAL.	16
83	SYMBOL	COAST REDWOOD	4" CAL.	16
84	SYMBOL	COAST REDWOOD	4" CAL.	16
85	SYMBOL	COAST REDWOOD	4" CAL.	16
86	SYMBOL	COAST REDWOOD	4" CAL.	16
87	SYMBOL	COAST REDWOOD	4" CAL.	16
88	SYMBOL	COAST REDWOOD	4" CAL.	16
89	SYMBOL	COAST REDWOOD	4" CAL.	16
90	SYMBOL	COAST REDWOOD	4" CAL.	16
91	SYMBOL	COAST REDWOOD	4" CAL.	16
92	SYMBOL	COAST REDWOOD	4" CAL.	16
93	SYMBOL	COAST REDWOOD	4" CAL.	16
94	SYMBOL	COAST REDWOOD	4" CAL.	16
95	SYMBOL	COAST REDWOOD	4" CAL.	16
96	SYMBOL	COAST REDWOOD	4" CAL.	16
97	SYMBOL	COAST REDWOOD	4" CAL.	16
98	SYMBOL	COAST REDWOOD	4" CAL.	16
99	SYMBOL	COAST REDWOOD	4" CAL.	16
100	SYMBOL	COAST REDWOOD	4" CAL.	16

# L-104 PARTIAL LANDSCAPE SITE PLAN SYMPHONY PARK PARCEL E

NO EXISTING TREES ARE PRESENT ON SITE.

MATCHLINE SEE SHEET L-100

MATCHLINE SEE SHEET L-101

EXISTING CONDITIONS	LOCATION
EXIST. UTILITY OF OTHER STRUCTURE	NA
EXIST. FENCE/CONCRETE	NA
EXIST. CONCRETE/STREET	NA
EXIST. ASPHALT PAVING	NA
PAVEMENTS, CURBS, AND DUMPS	LOCATION
PV1 CHART IN PLACE CONCRETE AT PEDESTRIAN AREA	DESIGN OF ANDRUS PAGE 12
PV2 CHART IN PLACE CONCRETE AT PEDESTRIAN AREA	SEE CIVIL DOCUMENTS
PV3 CONCRETE UNIT PAVES AT PEDESTRIAN AREA	DESIGN OF ANDRUS PAGE 12
PV4 CONCRETE UNIT PAVES AT PEDESTRIAN AREA	SEE CIVIL DOCUMENTS
PV5 STONE PAVES AT PEDESTRIAN AREA	DESIGN OF ANDRUS PAGE 12
PV6 NOT USED	NA
PV7 POTENTIAL ARCH. TREATMENT AT PUBLIC INTERSECTION	SUBJECT TO FUTURE CITY DECISION
PV8 NOT USED	NA
PV9 NOT USED	NA
PV10 NOT USED	NA
PV11 SPILL CURB	SEE CIVIL DOCUMENTS
PV12 CUTTER FAN	SEE CIVIL DOCUMENTS
PV13 POTENTIAL SPURWAY CURB CUT	SEE CIVIL DOCUMENTS
PV14 12" CONCRETE ACCESS STRIP	ILLUSTRATED IN DETAIL P.1
PV15 24" CONCRETE ACCESS STRIP	SEE CIVIL DOCUMENTS
PV16 ACCESSIBLE PAVEMENT	SEE CIVIL DOCUMENTS
PV17 ACCESSIBLE PAVEMENT	SEE CIVIL DOCUMENTS
PV18 SPECIAL ASPHALT PAVING AT VEHICULAR AREA	SUBJECT TO FUTURE CITY DECISION
PV19 STONE MASONRY	DESIGN OF ANDRUS PAGE 14
PV20 TREE GRATE A	DESIGN OF ANDRUS PAGE 14
PV21 TREE GRATE B	DESIGN OF ANDRUS PAGE 14
JOINTING	LOCATION
JN1 SPARK CONTROL JOINT	DESIGN OF ANDRUS PAGE 14
JN2 EXPANSION JOINT	DESIGN OF ANDRUS PAGE 14
SITE WALLS / EMBANKMENTS	LOCATION
SW1 CHART IN PLACE CONCRETE SEAT WALL	DESIGN OF ANDRUS PAGE 14
SITE FURNITURE	LOCATION
FF1 PROJECT BENCH	DESIGN OF ANDRUS PAGE 17
FF2 NOT USED	NA
FF3 NOT USED	NA
FF4 BENCHABLE TABLE AND CHAIRS	DESIGN OF ANDRUS PAGE 18
FF5 NOT USED	NA
FF6 TRASH RECEPTACLE	DESIGN OF ANDRUS PAGE 18
FF7 DRINKING FOUNTAIN	DESIGN OF ANDRUS PAGE 18
FF8 BICYCLE RACK	DESIGN OF ANDRUS PAGE 18
FF9 BICYCLE RACK	DESIGN OF ANDRUS PAGE 18
FF10 BICYCLE RACK	DESIGN OF ANDRUS PAGE 18
FF11 PLANTED POT A	DESIGN OF ANDRUS PAGE 18
FF12 PLANTED POT B	DESIGN OF ANDRUS PAGE 18
FF13 BOLLARD	DESIGN OF ANDRUS PAGE 18
SITE LIGHTING	LOCATION
SL1 PROXIMITY LIGHT	REFER TO SHEET L-103
SL2 UP LIGHT	DESIGN OF ANDRUS PAGE 18
SL3 PESTICIDE LIGHT	REFER TO SHEET L-103
SL4 DOWN LIGHT	DESIGN OF ANDRUS PAGE 18
SL5 STREET LIGHT	NA
SL6 STREET LIGHT - PHASE 2 - PROPOSED LOCATION	NA
PLANTING AND LANDSCAPE	LOCATION
PL1 STREET TREE IN LANDSCAPE PANEL	DESIGN OF ANDRUS PAGE 12
PL2 STREET TREE IN LANDSCAPE PANEL	DESIGN OF ANDRUS PAGE 12
PL3 STREET TREE IN LANDSCAPE PANEL	DESIGN OF ANDRUS PAGE 12
PL4 PALM IN LANDSCAPE PANEL	DESIGN OF ANDRUS PAGE 12
PL5 PALM IN LANDSCAPE PANEL	DESIGN OF ANDRUS PAGE 12
PL6 ORNAMENTAL PLANTING	SEE SHEET L-101 AND L-102
PL7 LANDSCAPE PANEL PLANTING	SEE SHEET L-101
PL8 TREE TRENCH	DESIGN OF ANDRUS PAGE 12
PL9 PALM IN GIVE GRATE	DESIGN OF ANDRUS PAGE 12
BARRIERS AND FENCINGS	LOCATION
BF1 GREEN SCREEN	DESIGN OF ANDRUS PAGE 12
BF2 LANDSCAPE PANEL BARRIER A	DESIGN OF ANDRUS PAGE 12
BF3 LANDSCAPE PANEL BARRIER B	DESIGN OF ANDRUS PAGE 12



AUGUST 27, 2023

BLT & NV

NV

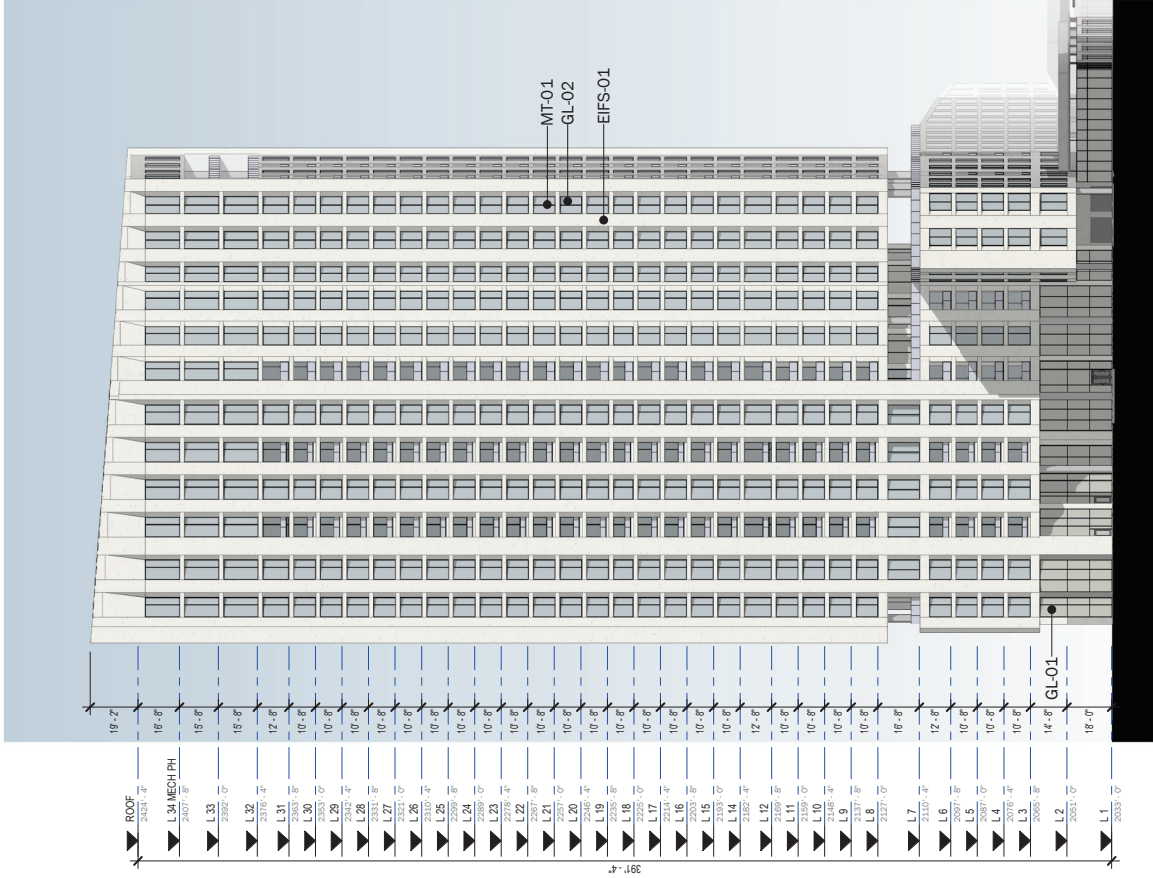
FLOOR



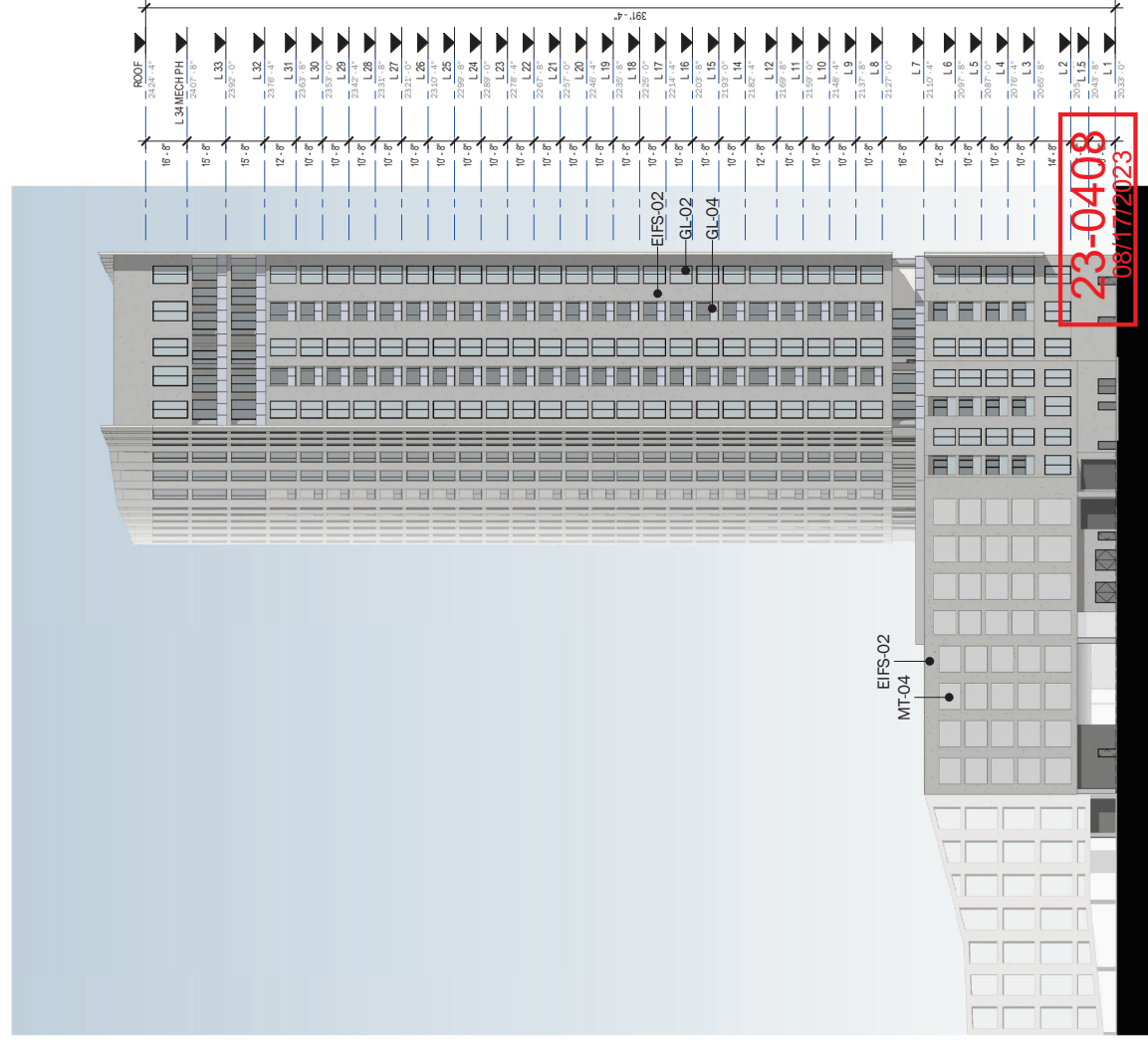
MISCELLANEOUS ELEMENT	LOCATION
M01 BUS STOP - SEATED ZONE 12	DESIGN OF ANDRUS PAGE 12
M02 UTILITY BOX	NA - WORK BY OTHERS
M03 UTILITY BOX	NA - WORK BY OTHERS
M04 UTILITY BOX	NA - WORK BY OTHERS
M05 UTILITY BOX	NA - WORK BY OTHERS
M06 UTILITY BOX	NA - WORK BY OTHERS
M07 UTILITY BOX	NA - WORK BY OTHERS
M08 UTILITY BOX	NA - WORK BY OTHERS
M09 UTILITY BOX	NA - WORK BY OTHERS
M10 UTILITY BOX	NA - WORK BY OTHERS
M11 UTILITY BOX	NA - WORK BY OTHERS
M12 UTILITY BOX	NA - WORK BY OTHERS
M13 UTILITY BOX	NA - WORK BY OTHERS
M14 UTILITY BOX	NA - WORK BY OTHERS
M15 UTILITY BOX	NA - WORK BY OTHERS
M16 UTILITY BOX	NA - WORK BY OTHERS
M17 UTILITY BOX	NA - WORK BY OTHERS
M18 UTILITY BOX	NA - WORK BY OTHERS
M19 UTILITY BOX	NA - WORK BY OTHERS
M20 UTILITY BOX	NA - WORK BY OTHERS
M21 UTILITY BOX	NA - WORK BY OTHERS
M22 UTILITY BOX	NA - WORK BY OTHERS
M23 UTILITY BOX	NA - WORK BY OTHERS
M24 UTILITY BOX	NA - WORK BY OTHERS
M25 UTILITY BOX	NA - WORK BY OTHERS
M26 UTILITY BOX	NA - WORK BY OTHERS
M27 UTILITY BOX	NA - WORK BY OTHERS
M28 UTILITY BOX	NA - WORK BY OTHERS
M29 UTILITY BOX	NA - WORK BY OTHERS
M30 UTILITY BOX	NA - WORK BY OTHERS
M31 UTILITY BOX	NA - WORK BY OTHERS
M32 UTILITY BOX	NA - WORK BY OTHERS
M33 UTILITY BOX	NA - WORK BY OTHERS
M34 UTILITY BOX	NA - WORK BY OTHERS
M35 UTILITY BOX	NA - WORK BY OTHERS
M36 UTILITY BOX	NA - WORK BY OTHERS
M37 UTILITY BOX	NA - WORK BY OTHERS
M38 UTILITY BOX	NA - WORK BY OTHERS
M39 UTILITY BOX	NA - WORK BY OTHERS
M40 UTILITY BOX	NA - WORK BY OTHERS
M41 UTILITY BOX	NA - WORK BY OTHERS
M42 UTILITY BOX	NA - WORK BY OTHERS
M43 UTILITY BOX	NA - WORK BY OTHERS
M44 UTILITY BOX	NA - WORK BY OTHERS
M45 UTILITY BOX	NA - WORK BY OTHERS
M46 UTILITY BOX	NA - WORK BY OTHERS
M47 UTILITY BOX	NA - WORK BY OTHERS
M48 UTILITY BOX	NA - WORK BY OTHERS
M49 UTILITY BOX	NA - WORK BY OTHERS
M50 UTILITY BOX	NA - WORK BY OTHERS
M51 UTILITY BOX	NA - WORK BY OTHERS
M52 UTILITY BOX	NA - WORK BY OTHERS
M53 UTILITY BOX	NA - WORK BY OTHERS
M54 UTILITY BOX	NA - WORK BY OTHERS
M55 UTILITY BOX	NA - WORK BY OTHERS
M56 UTILITY BOX	NA - WORK BY OTHERS
M57 UTILITY BOX	NA - WORK BY OTHERS
M58 UTILITY BOX	NA - WORK BY OTHERS
M59 UTILITY BOX	NA - WORK BY OTHERS
M60 UTILITY BOX	NA - WORK BY OTHERS
M61 UTILITY BOX	NA - WORK BY OTHERS
M62 UTILITY BOX	NA - WORK BY OTHERS
M63 UTILITY BOX	NA - WORK BY OTHERS
M64 UTILITY BOX	NA - WORK BY OTHERS
M65 UTILITY BOX	NA - WORK BY OTHERS
M66 UTILITY BOX	NA - WORK BY OTHERS
M67 UTILITY BOX	NA - WORK BY OTHERS
M68 UTILITY BOX	NA - WORK BY OTHERS
M69 UTILITY BOX	NA - WORK BY OTHERS
M70 UTILITY BOX	NA - WORK BY OTHERS
M71 UTILITY BOX	NA - WORK BY OTHERS
M72 UTILITY BOX	NA - WORK BY OTHERS
M73 UTILITY BOX	NA - WORK BY OTHERS
M74 UTILITY BOX	NA - WORK BY OTHERS
M75 UTILITY BOX	NA - WORK BY OTHERS
M76 UTILITY BOX	NA - WORK BY OTHERS
M77 UTILITY BOX	NA - WORK BY OTHERS
M78 UTILITY BOX	NA - WORK BY OTHERS
M79 UTILITY BOX	NA - WORK BY OTHERS
M80 UTILITY BOX	NA - WORK BY OTHERS
M81 UTILITY BOX	NA - WORK BY OTHERS
M82 UTILITY BOX	NA - WORK BY OTHERS
M83 UTILITY BOX	NA - WORK BY OTHERS
M84 UTILITY BOX	NA - WORK BY OTHERS
M85 UTILITY BOX	NA - WORK BY OTHERS
M86 UTILITY BOX	NA - WORK BY OTHERS
M87 UTILITY BOX	NA - WORK BY OTHERS
M88 UTILITY BOX	NA - WORK BY OTHERS
M89 UTILITY BOX	NA - WORK BY OTHERS
M90 UTILITY BOX	NA - WORK BY OTHERS
M91 UTILITY BOX	NA - WORK BY OTHERS
M92 UTILITY BOX	NA - WORK BY OTHERS
M93 UTILITY BOX	NA - WORK BY OTHERS
M94 UTILITY BOX	NA - WORK BY OTHERS
M95 UTILITY BOX	NA - WORK BY OTHERS
M96 UTILITY BOX	NA - WORK BY OTHERS
M97 UTILITY BOX	NA - WORK BY OTHERS
M98 UTILITY BOX	NA - WORK BY OTHERS
M99 UTILITY BOX	NA - WORK BY OTHERS
M100 UTILITY BOX	NA - WORK BY OTHERS

## SITE LAYOUT NOTES

1. CENTER POINT OF UTILITY BOXES SHALL BE LOCATED WITHIN THE UTILITY BOXES.
2. ALL UTILITY BOXES SHALL BE LOCATED WITHIN THE UTILITY BOXES.
3. ALL UTILITY BOXES SHALL BE LOCATED WITHIN THE UTILITY BOXES.
4. ALL UTILITY BOXES SHALL BE LOCATED WITHIN THE UTILITY BOXES.
5. ALL UTILITY BOXES SHALL BE LOCATED WITHIN THE UTILITY BOXES.
6. ALL UTILITY BOXES SHALL BE LOCATED WITHIN THE UTILITY BOXES.
7. ALL UTILITY BOXES SHALL BE LOCATED WITHIN THE UTILITY BOXES.
8. ALL UTILITY BOXES SHALL BE LOCATED WITHIN THE UTILITY BOXES.
9. ALL UTILITY BOXES SHALL BE LOCATED WITHIN THE UTILITY BOXES.
10. ALL UTILITY BOXES SHALL BE LOCATED WITHIN THE UTILITY BOXES.
11. ALL UTILITY BOXES SHALL BE LOCATED WITHIN THE UTILITY BOXES.
12. ALL UTILITY BOXES SHALL BE LOCATED WITHIN THE UTILITY BOXES.
13. ALL UTILITY BOXES SHALL BE LOCATED WITHIN THE UTILITY BOXES.
14. ALL UTILITY BOXES SHALL BE LOCATED WITHIN THE UTILITY BOXES.
15. ALL UTILITY BOXES SHALL BE LOCATED WITHIN THE UTILITY BOXES.
16. ALL UTILITY BOXES SHALL BE LOCATED WITHIN THE UTILITY BOXES.
17. ALL UTILITY BOXES SHALL BE LOCATED WITHIN THE UTILITY BOXES.
18. ALL UTILITY BOXES SHALL BE LOCATED WITHIN THE UTILITY BOXES.



**SOUTH ELEVATION**



**WEST ELEVATION**

**A1.2.1.1 SOUTH & WEST ELEVATIONS**  
SYMPHONY PARK PARCELE - CONDO TOWER

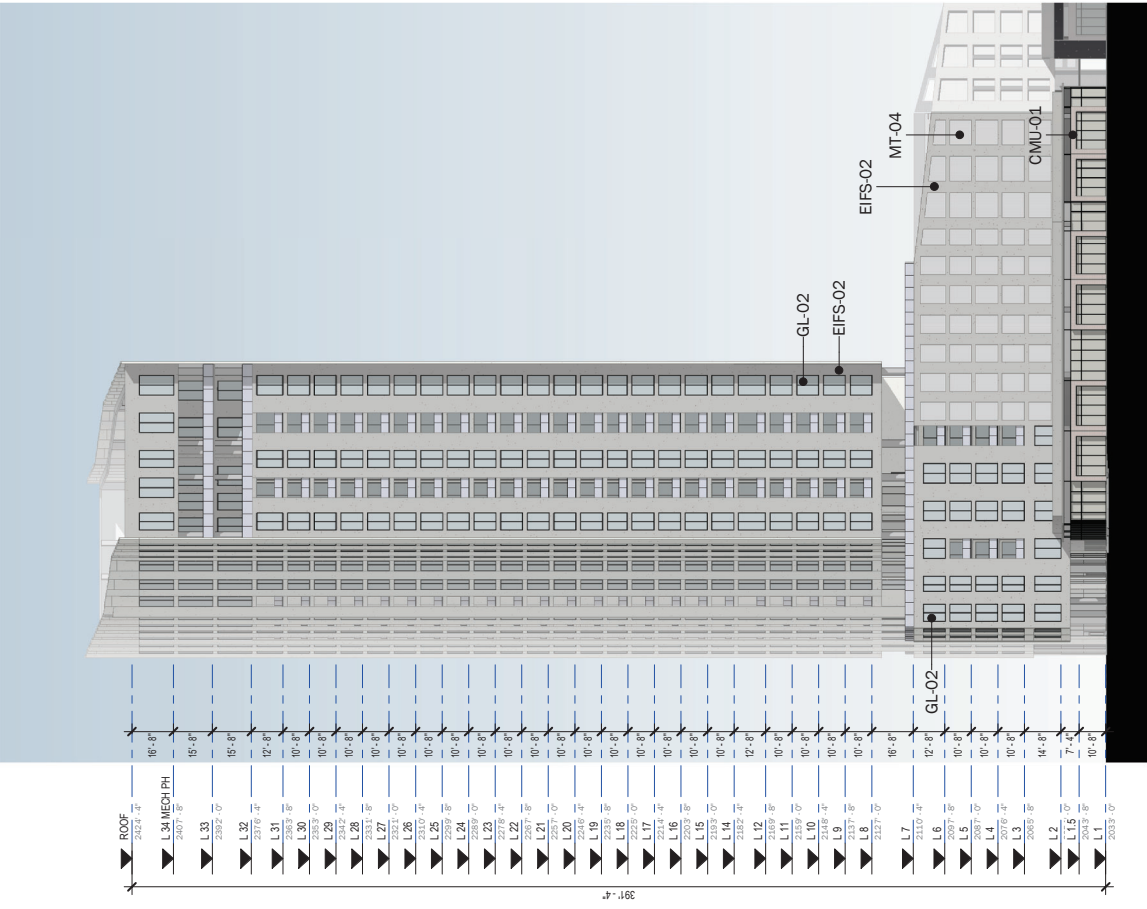
0' 25' 50' 100' 150'  
SCALE : 1" = 50'-0"

JULY 7, 2023

**BLTA** | **NV**

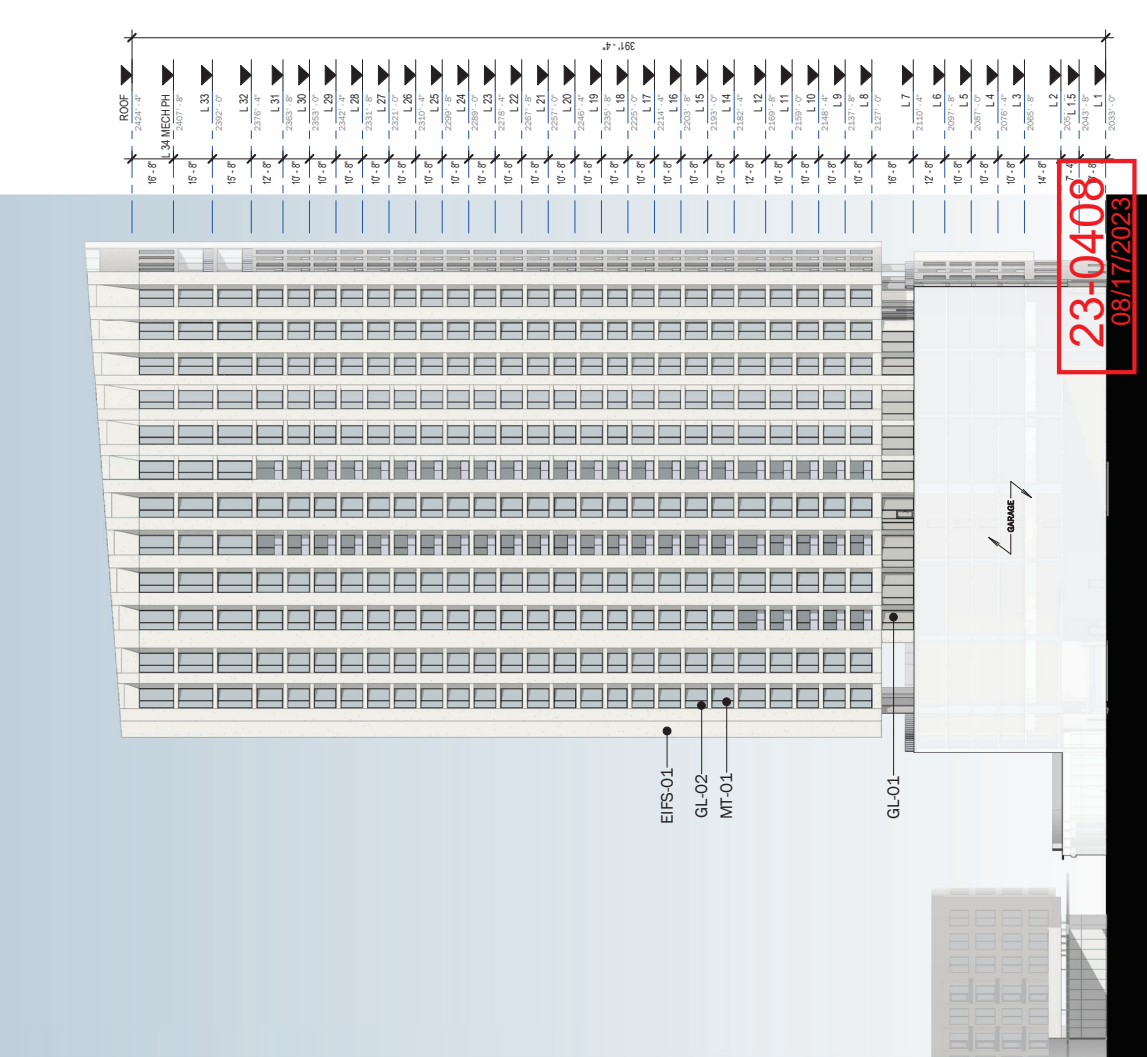
— 4' EXISTING EXTERIOR FINISH —





EAST ELEVATION

AL1.2.2 NORTH & EAST ELEVATIONS  
SYMPHONY PARK PARCELE - CONDO TOWER



NORTH ELEVATION

0' 25' 50' 100' 150'  
SCALE : 1" = 50'-0"

JULY 7, 2023

BLTA NV

— FURNISH EXTERIOR ELEVATION



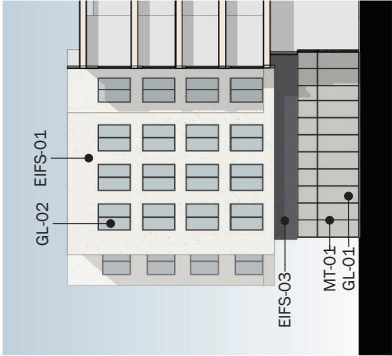
**WEST CARSON ELEVATION**



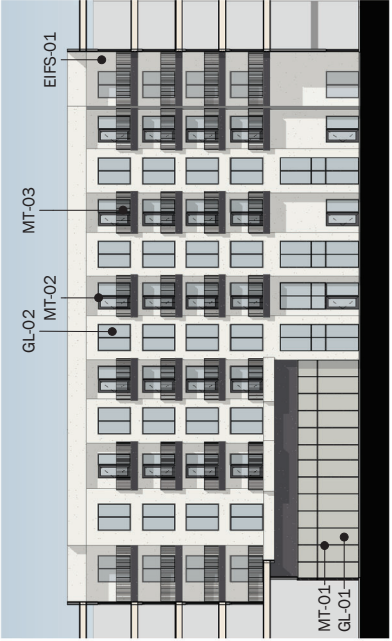
**CITY PARKWAY ELEVATION**

**23-0408**  
08/17/2023

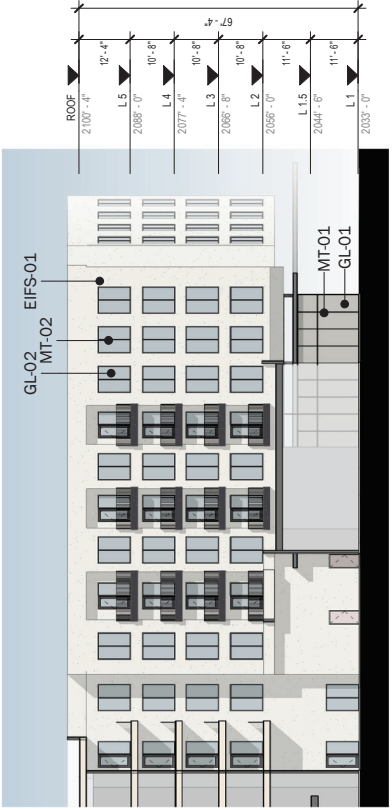




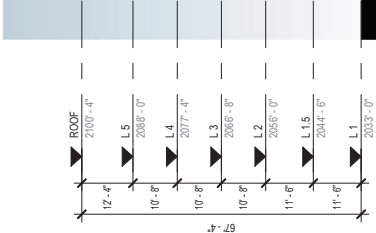
**COURTYARD SOUTH ELEVATION**



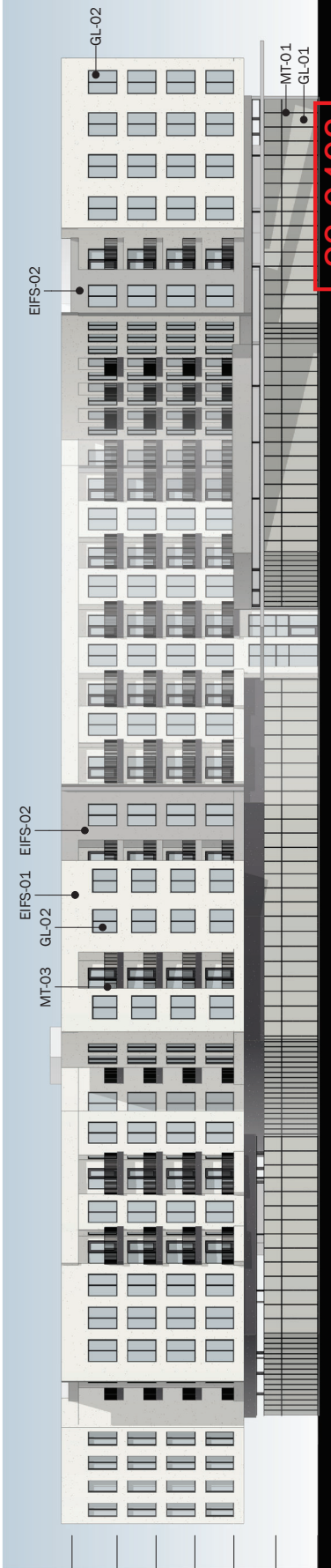
**COURTYARD WEST ELEVATION**



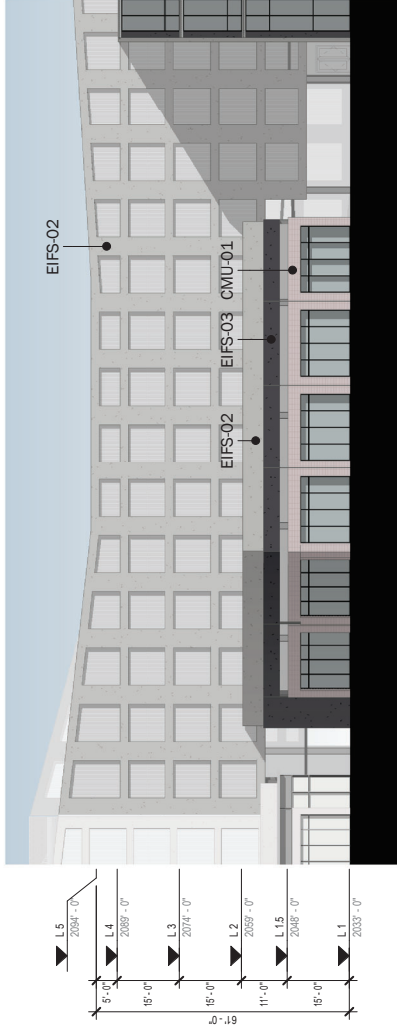
**COURTYARD NORTH ELEVATION**



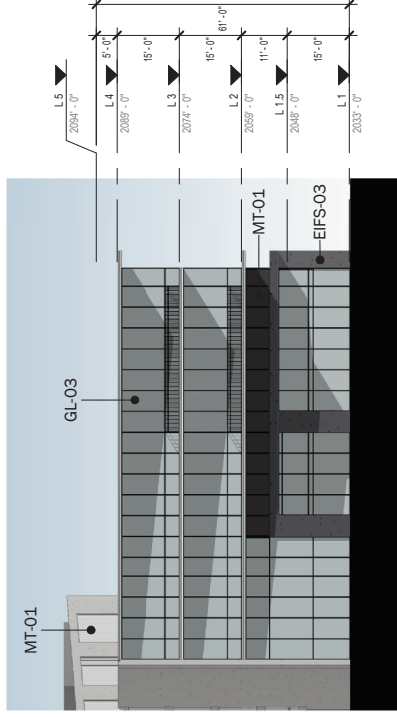
**WEST ELEVATION - INTERNAL STREET**



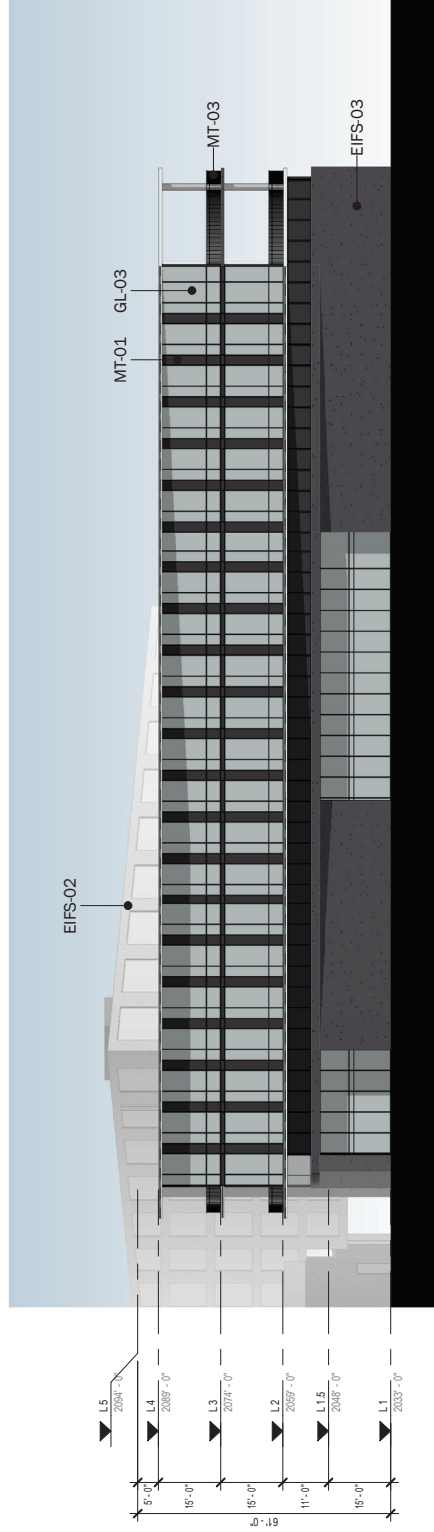
**23-0408**  
08/17/2023



**EAST ELEVATION**



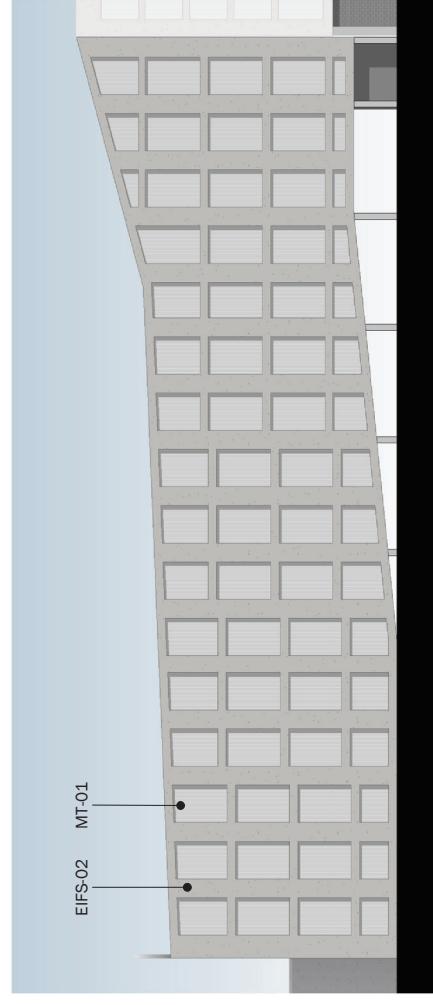
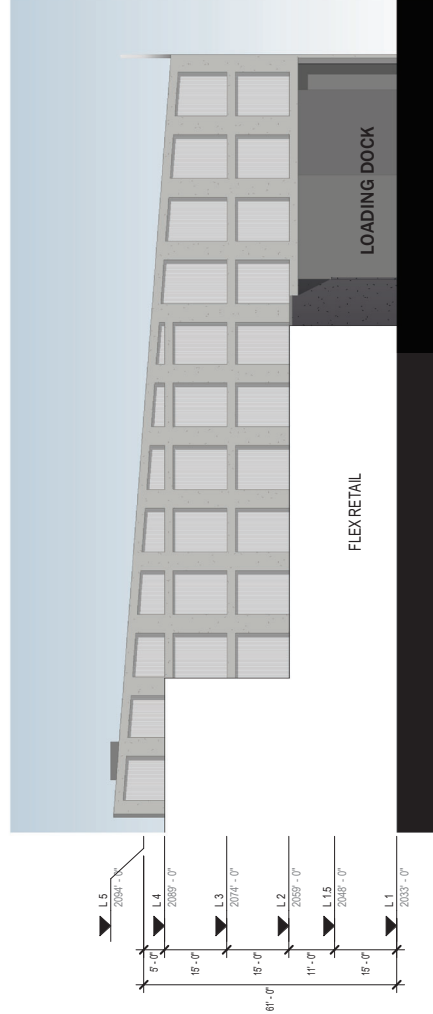
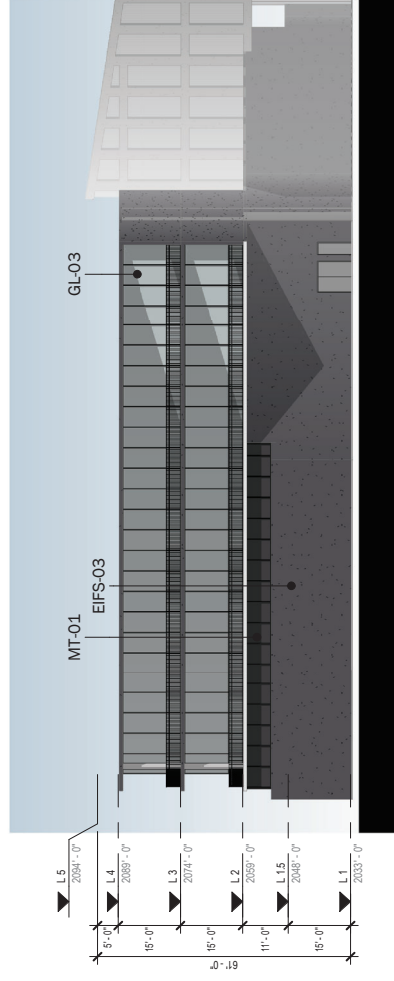
**SOUTH EAST ELEVATION**



**NORTH EAST ELEVATION**

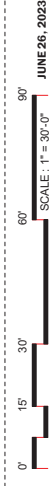
**23-0408**  
08/17/2023

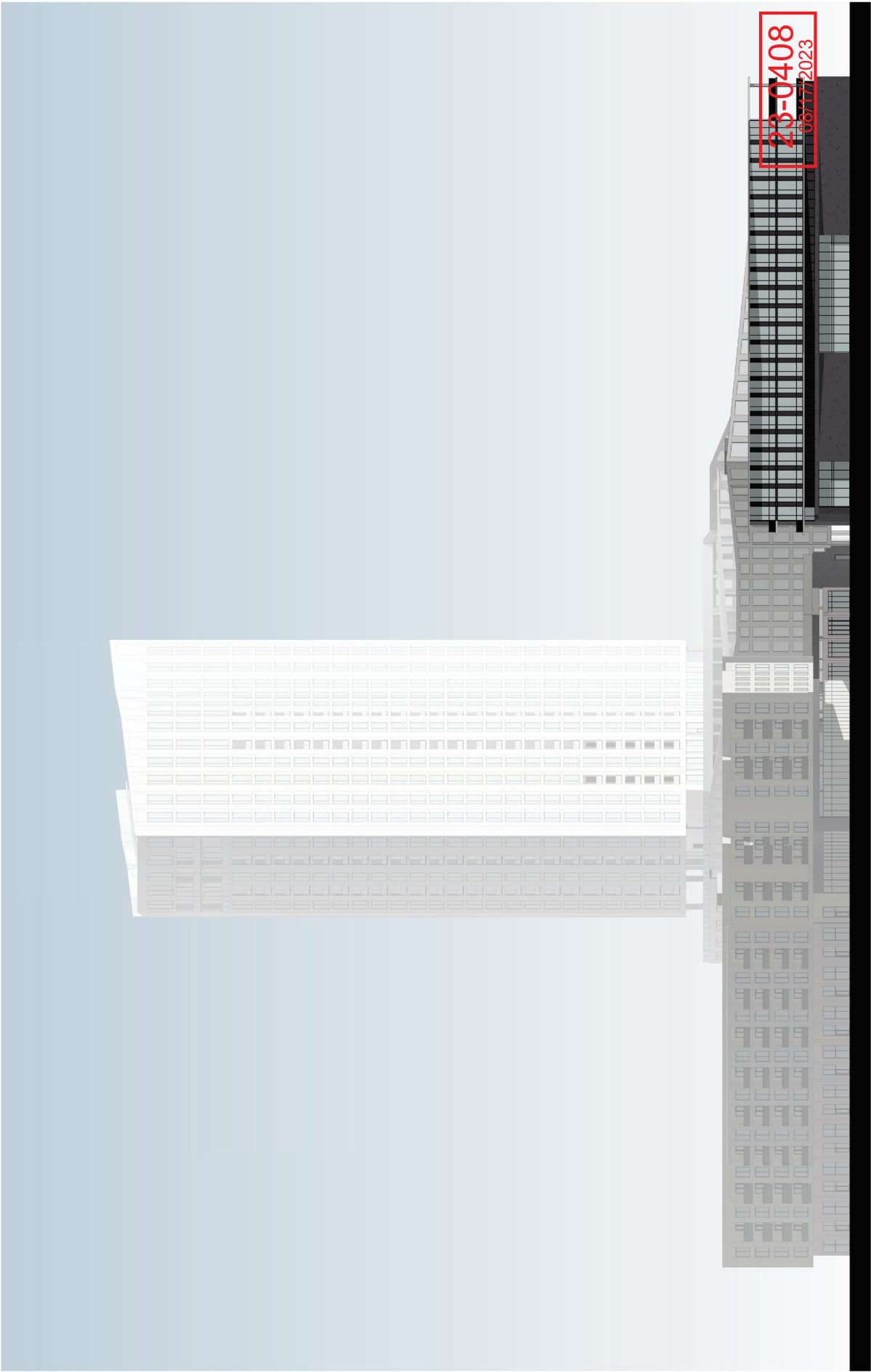




23-0408  
08/17/2023

### A3.2.2 WEST AND NORTH WEST ELEVATIONS

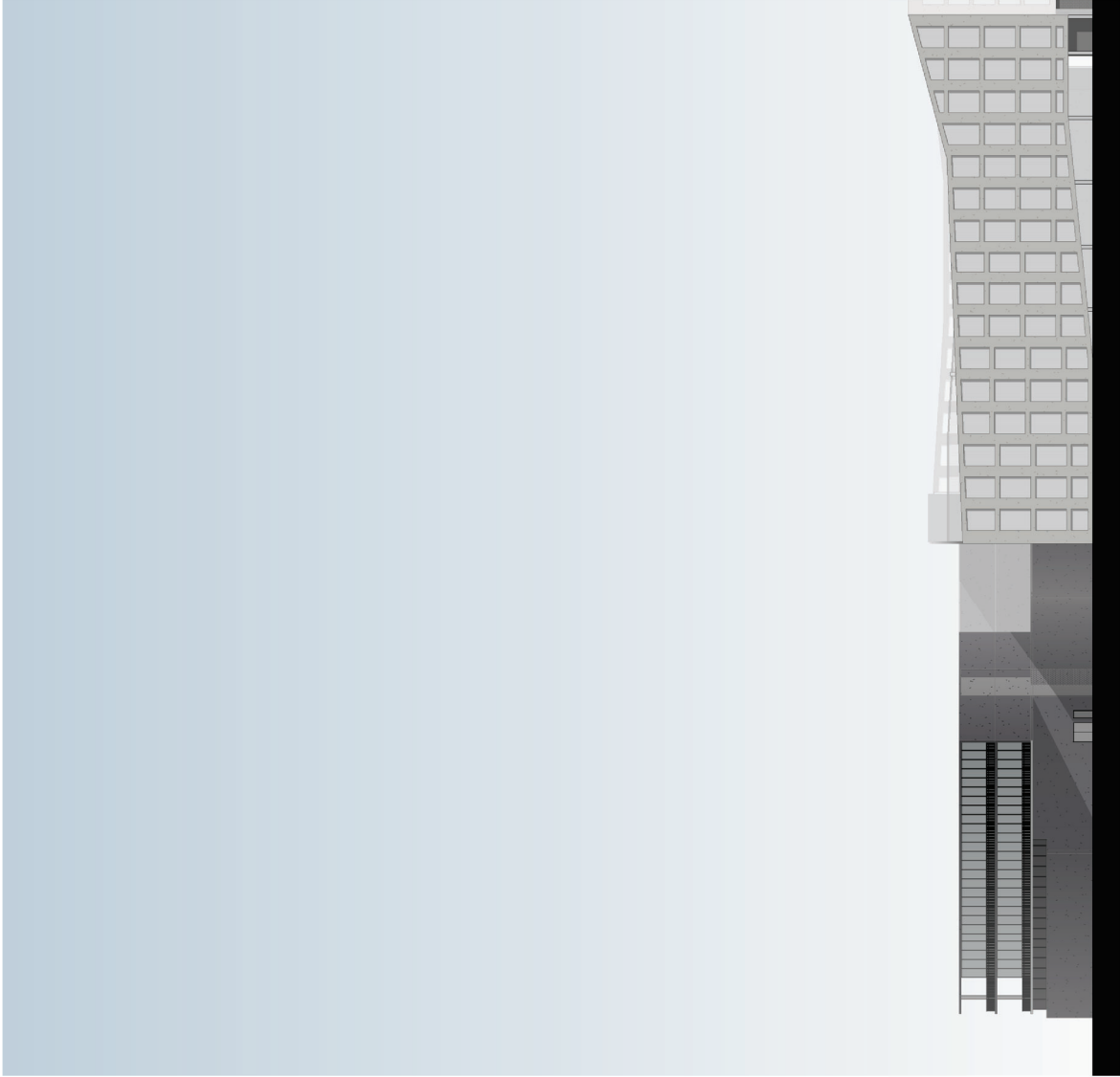




L6  
2024'-0"  
2029'-0"  
L3  
2074'-0"  
L2  
2089'-0"  
L15  
2048'-0"  
L1  
2033'-0"

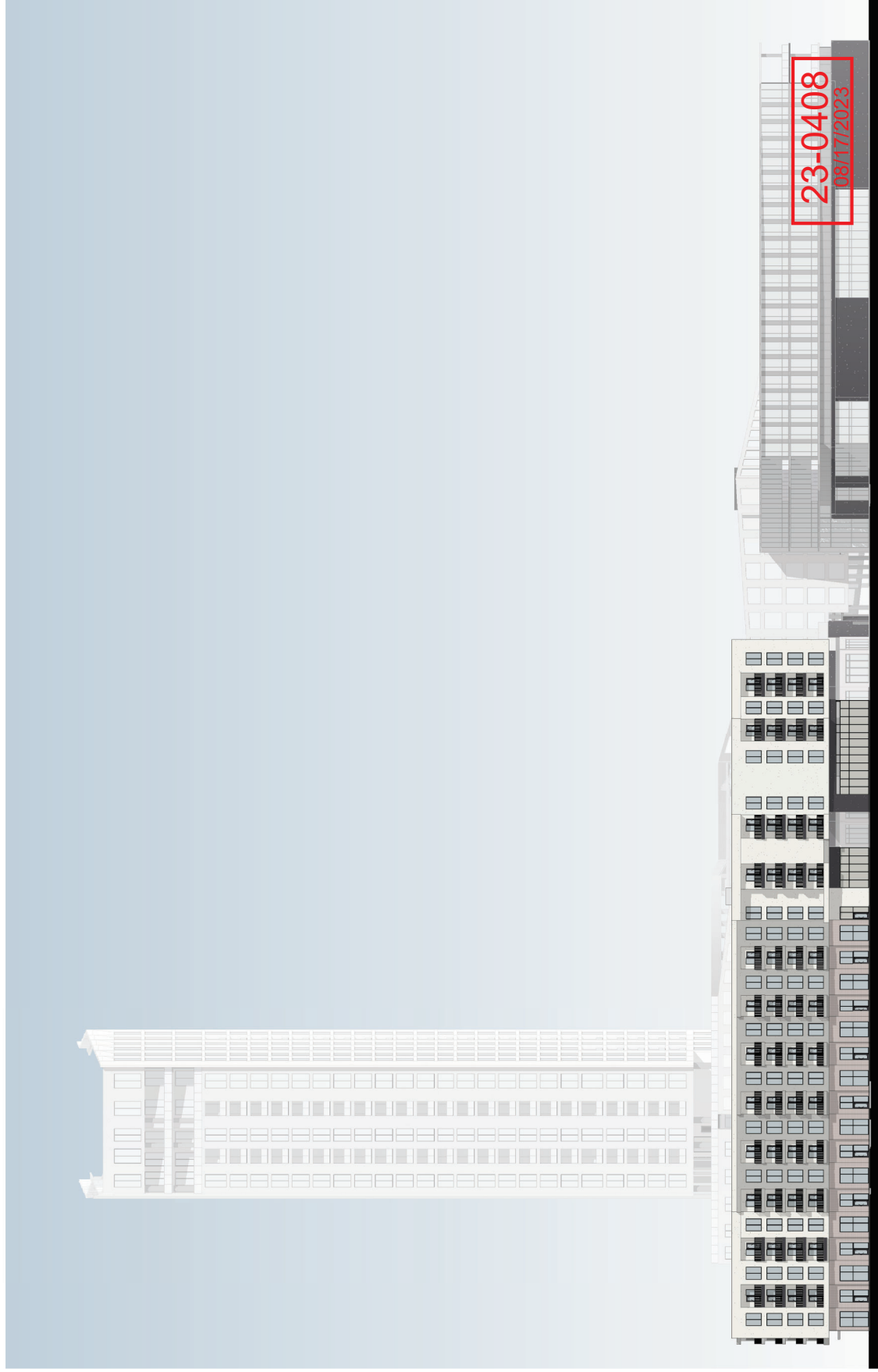


▼ L5  
2064'-0"  
2065'-0"  
▼ L3  
2074'-0"  
▼ L2  
2084'-0"  
▼ L18  
2048'-0"  
▼ L1  
2033'-0"

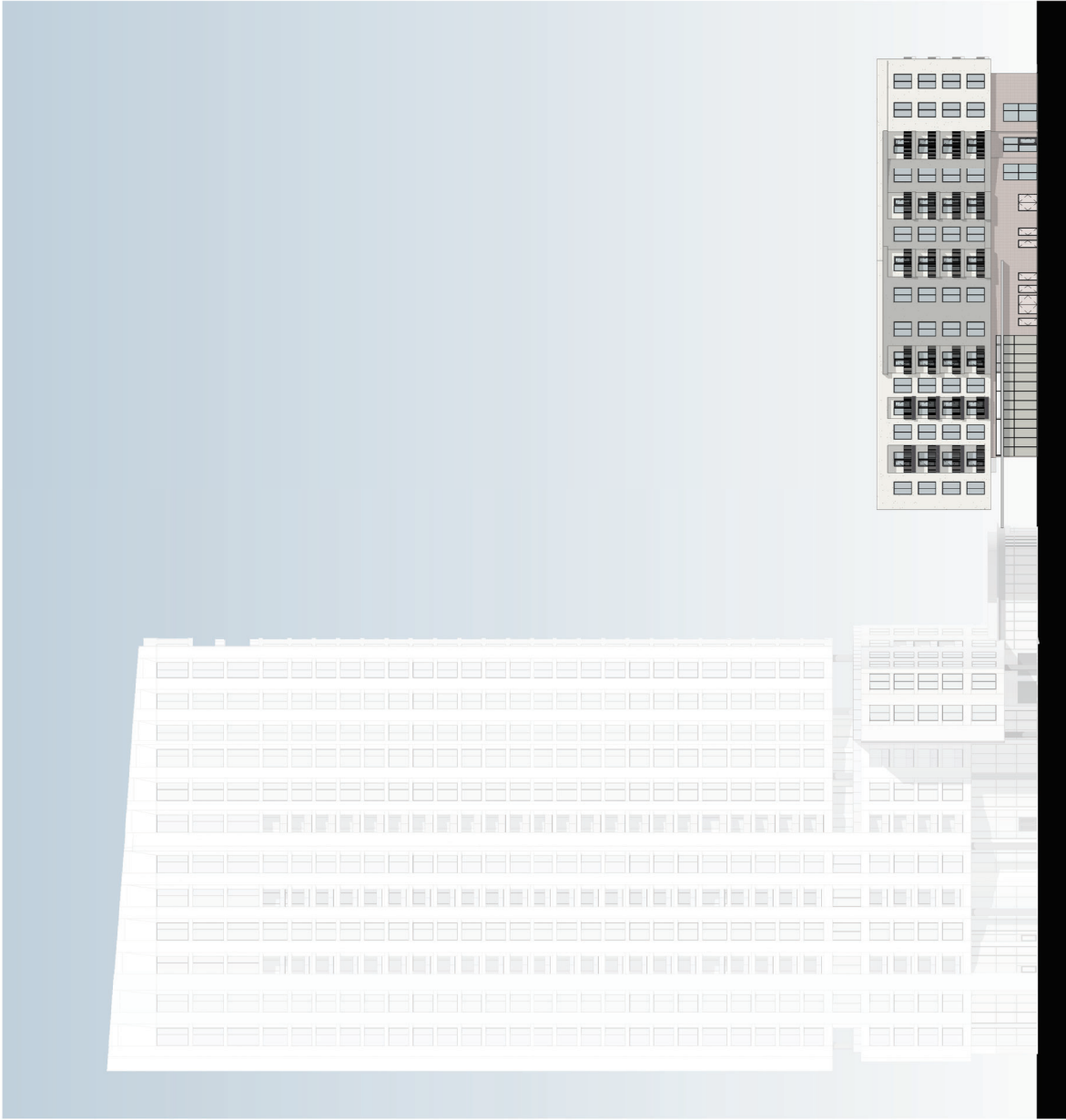


23-0408  
08/17/2023

▼ ROOF  
2102' - 4"  
▼ L5  
2088' 0"  
▼ L4  
2077' - 4"  
▼ L3  
2068' - 8"  
▼ L1.5  
2066' 0"  
▼ L1.5  
2044' - 6"  
▼ L1  
2033' - 0"

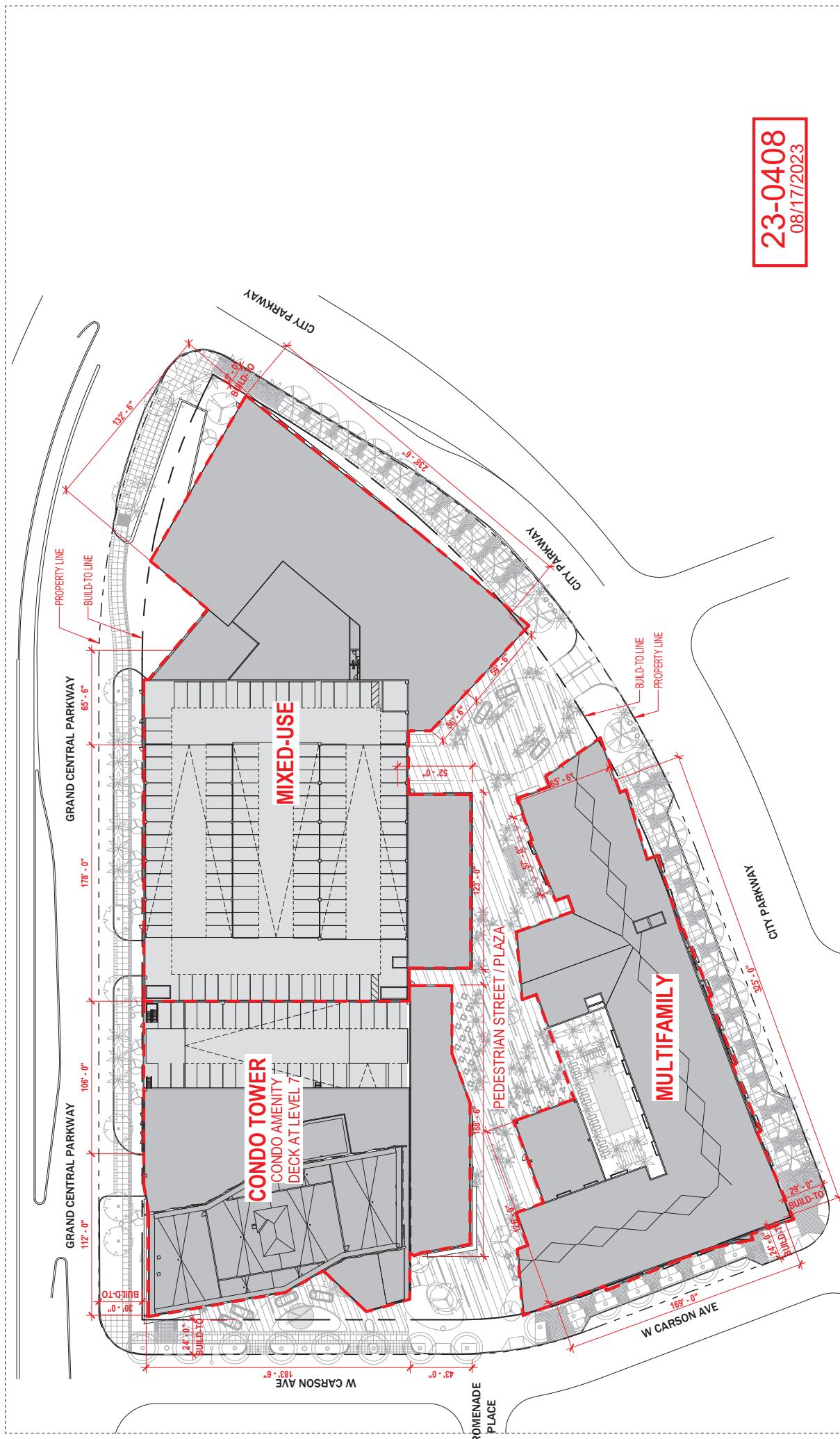






ROOF	▼
2107'-4"	▼
L5	▼
2088'-0"	▼
L4	▼
2077'-1"	▼
L3	▼
2066'-1"	▼
L2	▼
2055'-1"	▼
L1	▼
2044'-0"	▼
2033'-0"	▼

23-0408  
08/17/2023

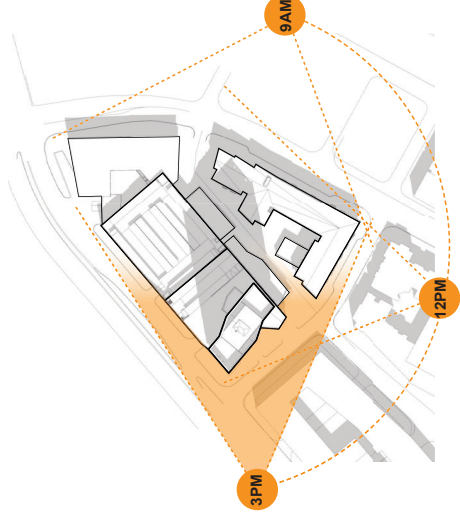
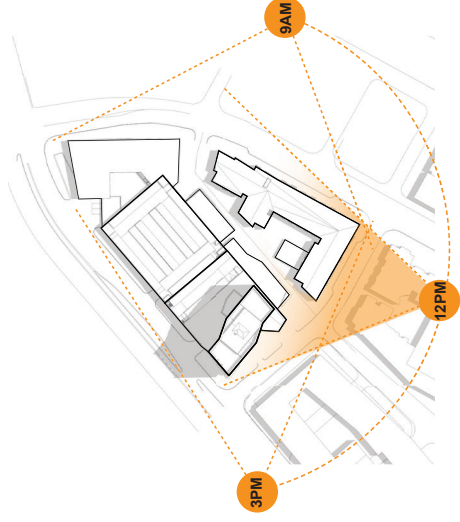
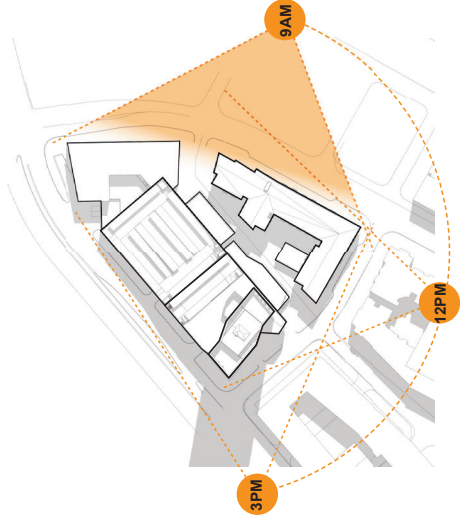


23-0408  
08/17/2023

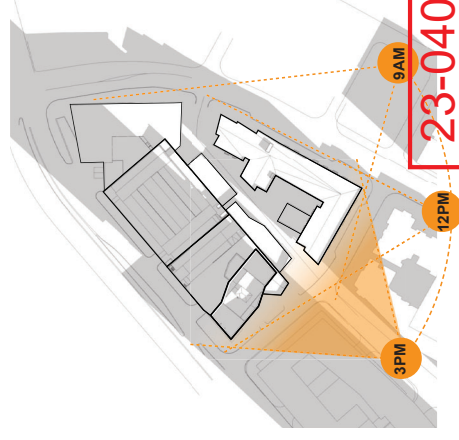
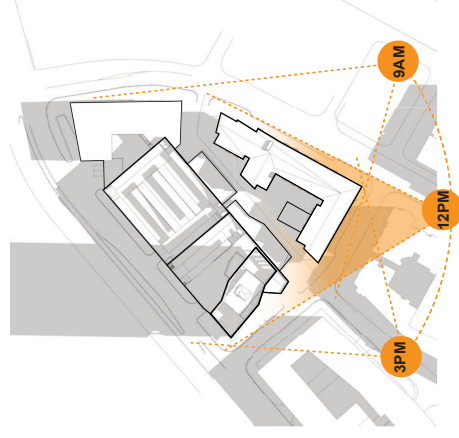
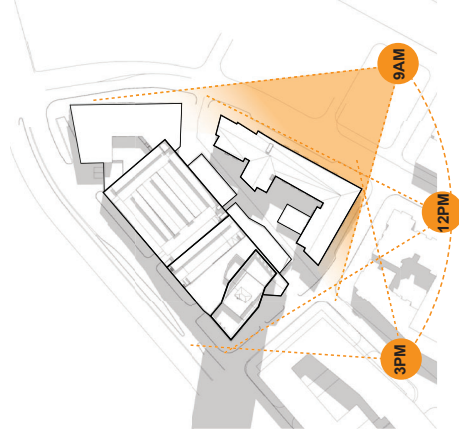
**A0.1 OVERALL SITE PLAN**  
93 S CITY PARKWAY LAS VEGAS, NV



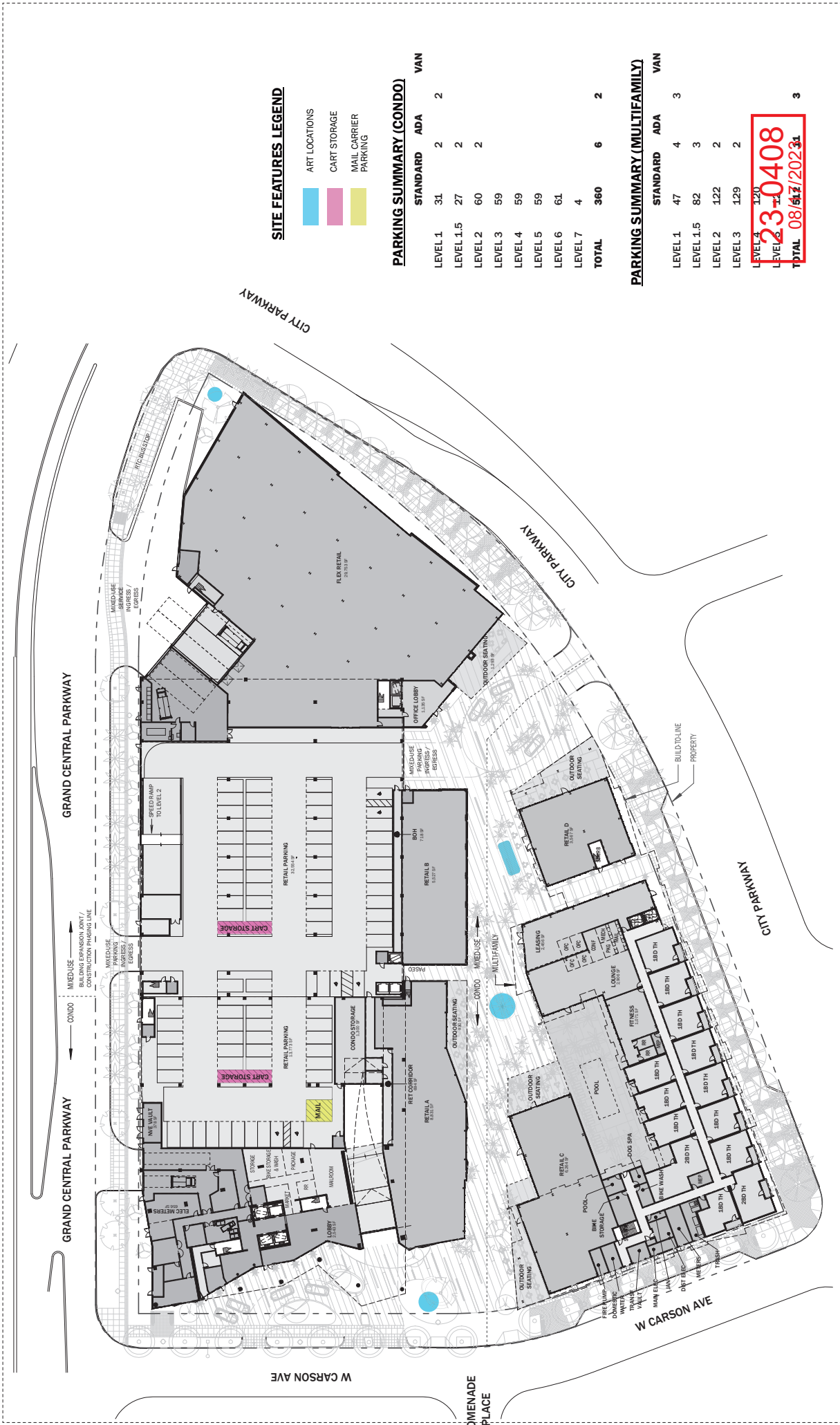
## SUMMER



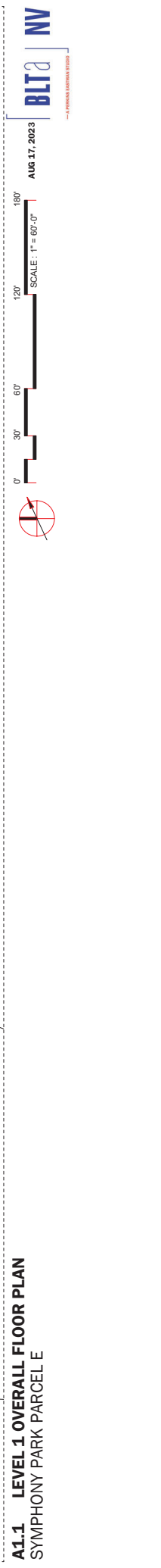
## WINTER



23-0408  
08/17/2023





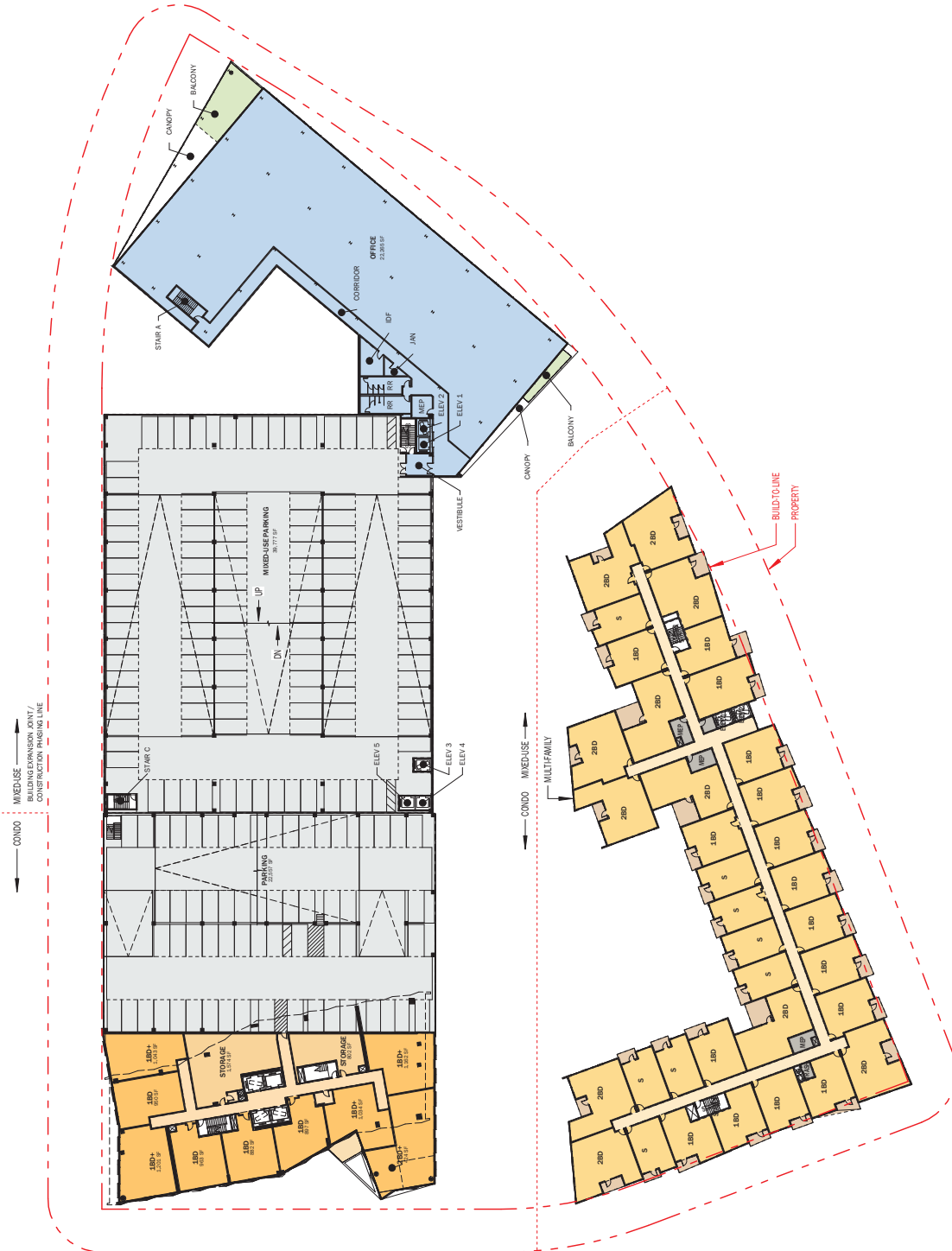


**A1.1 LEVEL 1 OVERALL FLOOR PLAN**  
SYMPHONY PARK PARCELS







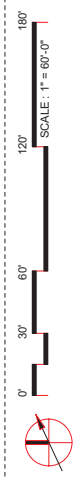


**23-0408**  
 08/17/2023

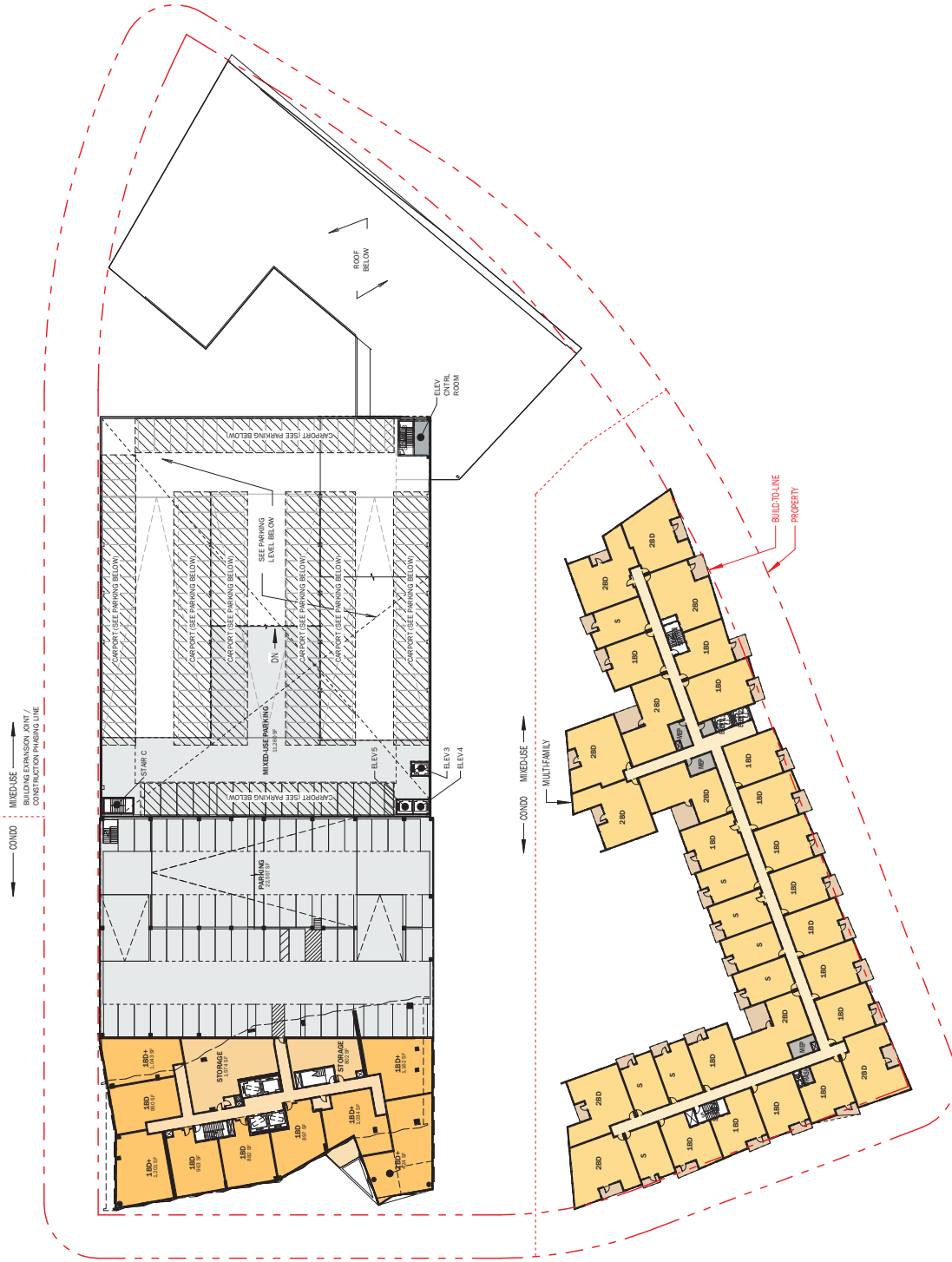
**SPACE LEGEND**

- COMMERCIAL RETAIL
- COMMERCIAL OFFICE
- RESIDENTIAL MULTIFAMILY
- RESIDENTIAL CONDO
- PAYMENT PARKING
- OUTDOOR AMENITY LANDSCAPE AREAS

**A1.3 LEVEL 3 OVERALL FLOOR PLAN**  
 SYMPHONY PARK PARCELE







SPACE LEGEND

- COMMERCIAL RETAIL
- COMMERCIAL OFFICE
- RESIDENTIAL MULTIFAMILY
- RESIDENTIAL CONDO
- PAYMENT PARKING
- OUTDOOR AMENITY LANDSCAPE AREAS

**23-0408**  
08/17/2023

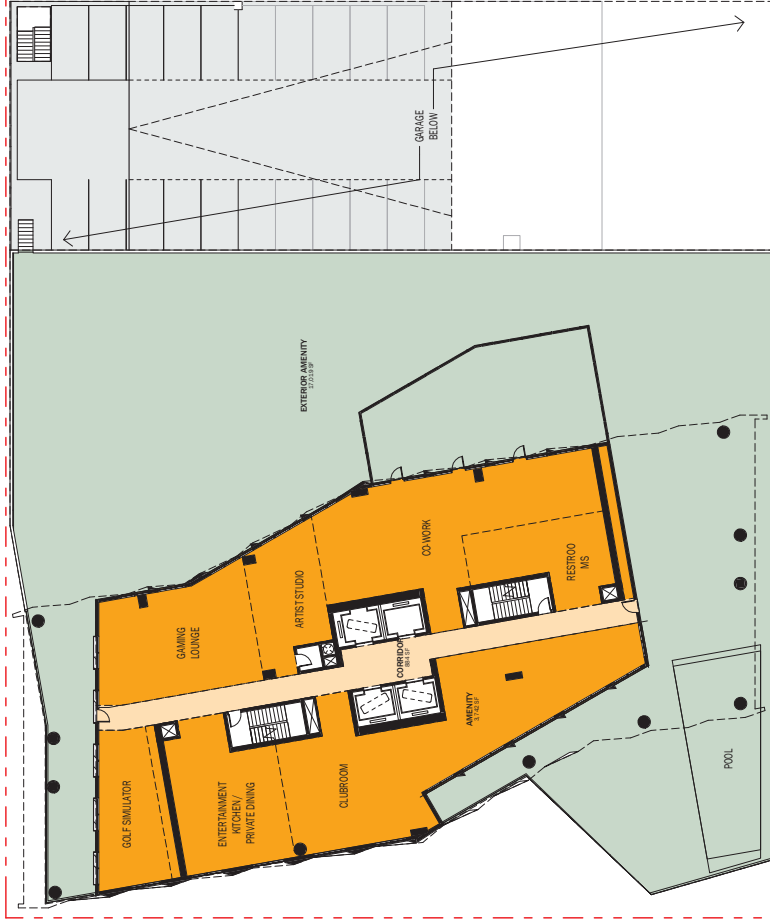
**A1.5 LEVEL 5 OVERALL FLOOR PLAN**  
SYMPHONY PARK PARCELE



AUG 17, 2023





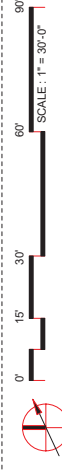


# SPACE LEGEND

COMMERCIAL RETAIL	COMMERCIAL OFFICE	RESIDENTIAL MULTIFAMILY	RESIDENTIAL CONDO	PAVEMENT PARKING	OUTDOOR AMENITY LANDSCAPE AREAS
-------------------	-------------------	-------------------------	-------------------	------------------	---------------------------------

23-0408  
08/17/2023

A1.7 LEVEL 7 CONDO PLAN  
SYMPHONY PARK PARCELE



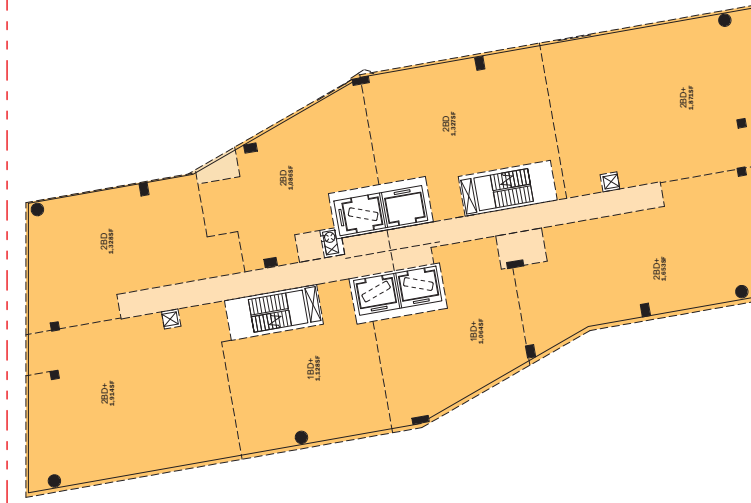
AUG 17, 2023

BLTA NV

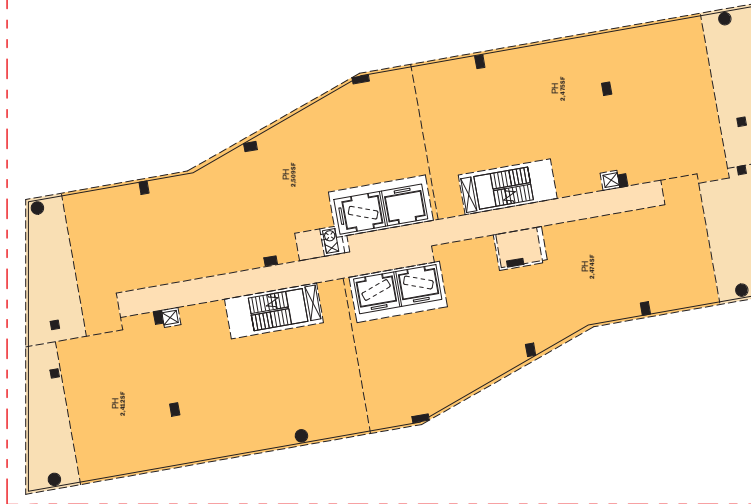
— 4' EXTERIOR LANDSCAPE AREAS



**LEVEL 8-21**



**LEVEL 22-31**

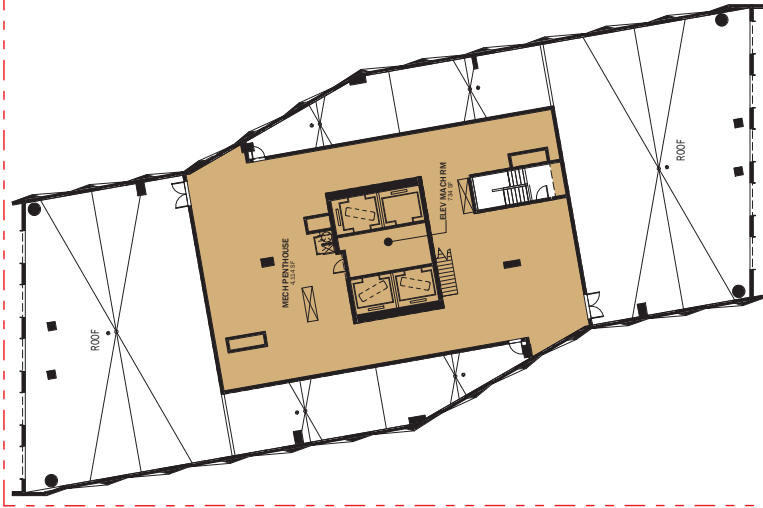


**LEVELS 32&33**

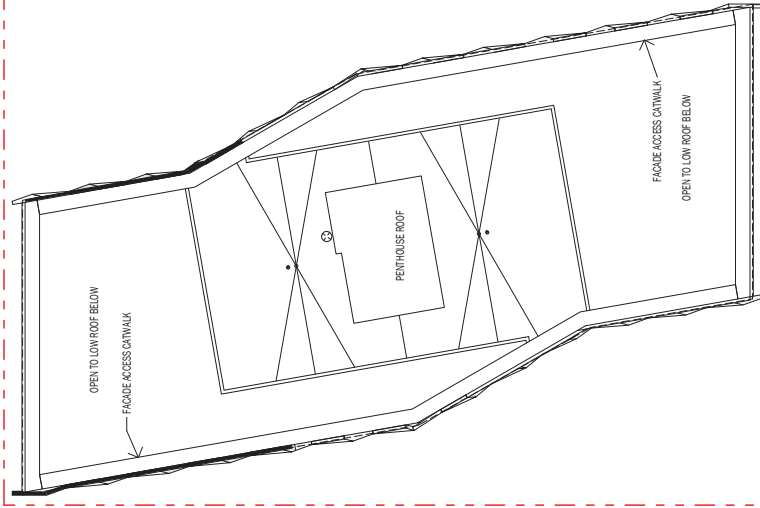
SPACE LEGEND  
 COMMERCIAL/RETAIL  
 COMMERCIAL OFFICE  
 RESIDENTIAL MULTIFAMILY  
 RESIDENTIAL CONDO  
 PAVEMENT/PARKING  
 OUTDOOR/ENTRY/LANDSCAPE/SEAS

**23-0408**  
 08/17/2023





**LEVEL 34 - MECH PENTHOUSE**



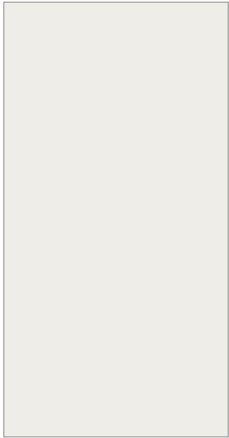
**ROOF**

**SPACE LEGEND**

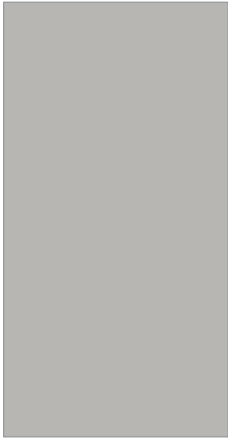
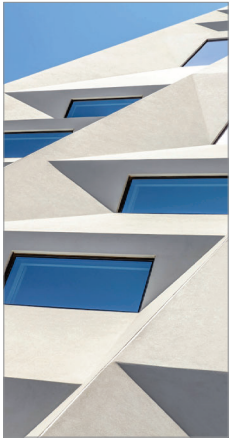
LOW RISE COMMERCIAL: RETAIL	PAVEMENT: PARKING	OUTDOOR AMENITY: LANDSCAPE AREAS
LOW RISE COMMERCIAL: OFFICE		
MED RISE: MULTIFAMILY		
RESIDENTIAL: CONDO		

**23-0408**  
08/17/2023





**EIFS-01: EIFS, COLOR 01**  
Color: SW 7005, Pure White



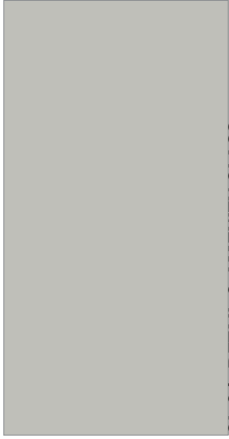
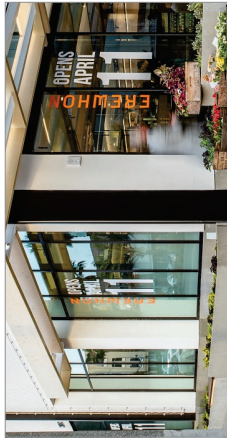
**EIFS-02: EIFS, COLOR 02**  
Color: SW 7668, March Wind



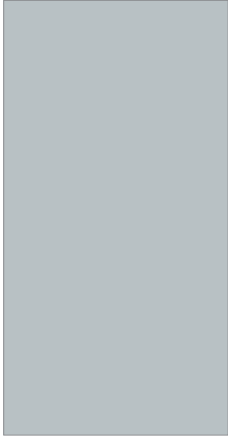
**MT-01: MULLIONS**  
Curtain Wall & Window Wall Mullion Finish



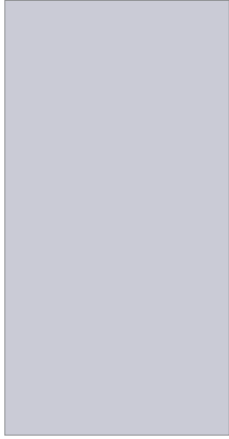
**CMU-01: DECORATIVE CMU**



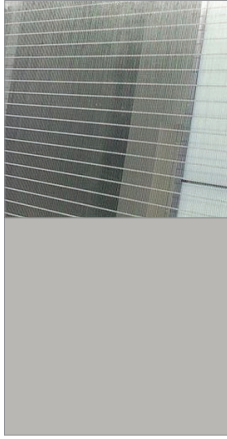
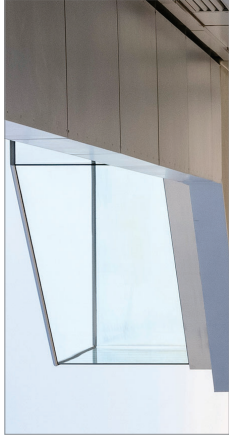
**GL-01: RETAIL & AMENITY GLASS**  
Solarban 72 (2) Acuity + Acuity



**GL-02: RESIDENTIAL GLASS**  
Solarban® R67 (2) Azuria® + Clear



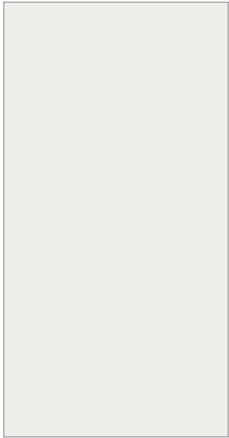
**GL-04: GLASS RAILING**  
Clear Laminated Glass.



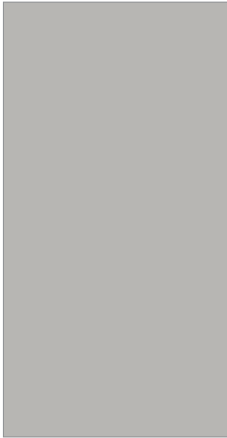
**MT-04: GARAGE SCREEN**  
EIFS Frame with Perforated Metal Infill



23-0408  
08/17/2023



**EIFS-01: EIFS, COLOR 01**  
Color: SW 7005, Pure White



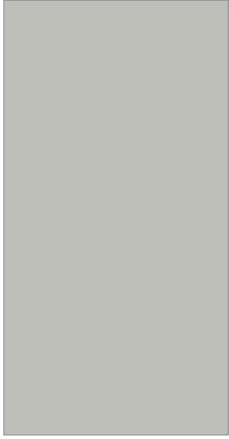
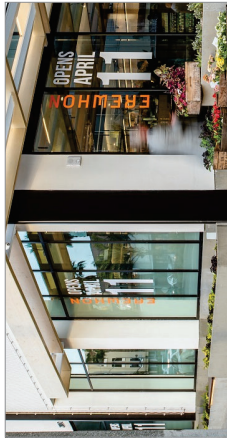
**EIFS-02: EIFS, COLOR 02**  
Color: SW 7668, March Wind



**EIFS-03: EIFS, COLOR 03**  
Color: SW 9154, Perle Noir



**CMU-01: DECORATIVE CMU**



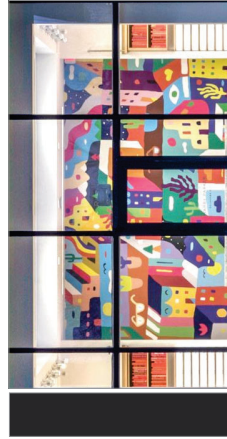
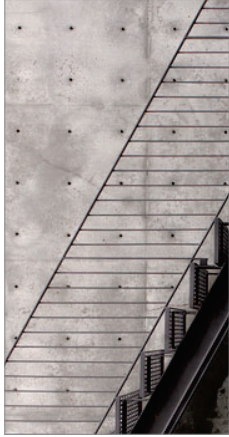
**GL-01: RETAIL & AMENITY GLASS**  
Solarban 72 (2) Acuity + Acuity



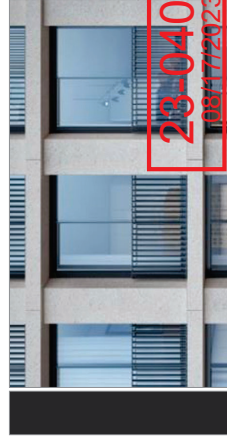
**GL-02: RESIDENTIAL GLASS**  
Solarban® R67 (2) Azuria® + Clear



**MT-03: STEEL PICKET RAILINGS**  
Color: SW 6992, Inkwell



**MT-01: MULLIONS**  
Curtain Wall & Window Wall Mullion Finish



23-0408  
08/17/2023

**MT-02: ALUMINUM WINDOW FRAMES**

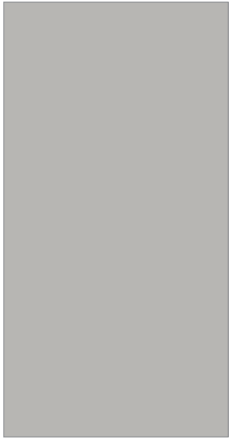
Powder Coated Aluminum, Color to Match SW 9154

## A2.0.2 PRELIM. EXTERIOR MATERIAL PALETTE - MULTI-FAMILY 93 S CITY PARKWAY LAS VEGAS, NV

SITE DEVELOPMENT PLAN REVIEW SUBMITTAL

JULY 10, 2023





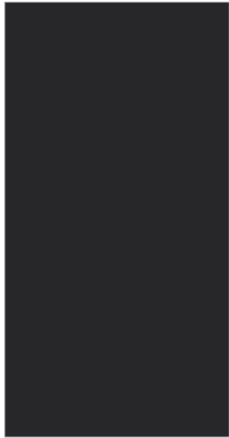
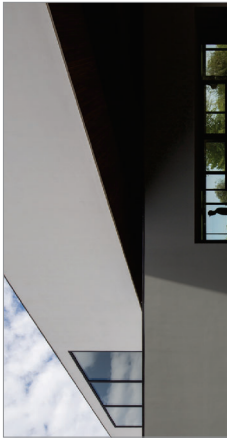
**EIFS-02: EIFS, COLOR 02**

Color: SW 7668, March Wind



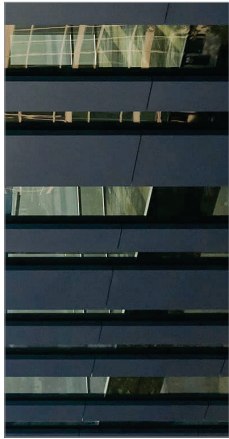
**EIFS-03: EIFS, COLOR 03**

Color: SW 9154, Perle Noir

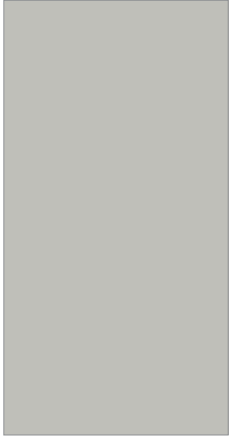
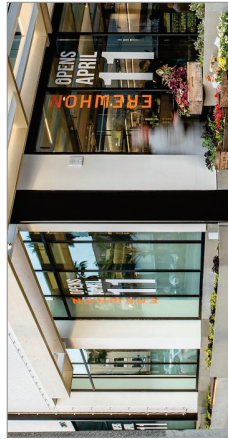


**MT-01: MULLIONS, CURTAIN WALL METAL PANEL INFILLS & METAL PANEL SOFFITS**

Curtain Wall & Window Wall Mullion Finish



**CMU-01: DECORATIVE CMU**



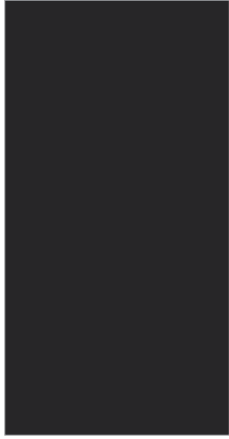
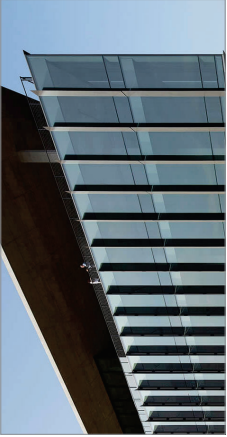
**GL-01: RETAIL & AMENITY GLASS**

Solarban 72 (2) Acuity + Acuity



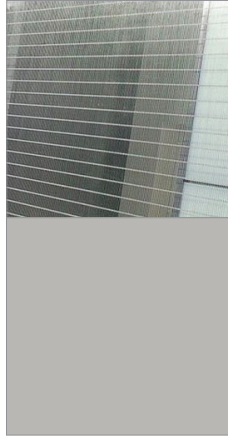
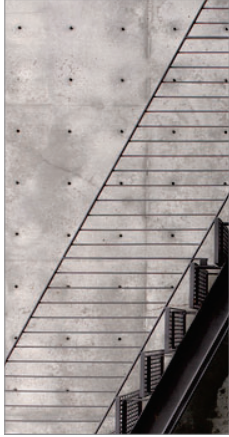
**GL-03: OFFICE GLASS**

Solarban® 72 (2) Acuity + Acuity



**MT-03: STEEL PICKET RAILINGS**

Color: SW 6992, Inkwell



**MT-04: GARAGE SCREEN**

EIFS Frame with Perforated Metal Infill



### **A2.0.3 PRELIM. EXTERIOR MATERIAL PALETTE - MIXED-USE**

93 S CITY PARKWAY LAS VEGAS, NV

SITE DEVELOPMENT PLAN REVIEW SUBMITTAL

EIFS Frame with Perforated Metal Infill

JULY 10, 2023

**BLTA** NV

— A PERMANENT EXTERIOR SCREEN

**23-0408**  
08/17/2023