



# DEPARTMENT OF PLANNING

## Application / Petition Form & Statement of Financial Interest

### Department Use

Case #	
Meeting Date	
Total Fee	
Received By/Date	

24-0668  
12/20/2024

Case Type (Special Use Permit, Rezoning, Variance, Site Development Plan Review, etc) Major Modification, Zone Change, SDR and Variance

Project Address (Location) Hickam and Jordanville

Project Name Silver Desert Estates Proposed Use Senior housing

Assessor's Parcel #(s) 137-01-301-012 Ward # 6

General Plan: Existing PCD Proposed PCD Zoning: Existing U/PCD Proposed PD

Additional Information \_\_\_\_\_

Property Owner USA (City of Las Vegas) Contact N/A  
Address 495 Main Street, City Las Vegas State NV Zip 89101  
E-mail n/a Phone 000-000-0000

Applicant Silver Desert Estates Ltd Partnership Contact Rebecca Velarde  
Address 412 NW 5th Avenue, Suite 200 City Portland State OR Zip 97209  
E-mail n/a Phone 000-000-0000

Representative Kaempfer Crowell Contact Jennifer Lazovich  
Address 1980 Festival Plaza Dr. #650 City Las Vegas State NV Zip 89135  
E-mail apierce@kcnvlaw.com Phone 702-792-7048

To the best of your knowledge, does the Mayor or any member of the City Council or Planning Commission have any financial interest in this or any other property with the property owner, applicant, the property owner or applicant's general or limited partners, or an officer of their corporation or limited liability company? ☐ Yes ☒ No

If yes, please indicate the member of the City Council or Planning Commission who is involved and list the name(s) of the person or persons with whom the City Official holds an interest. Also list the Assessor's Parcel Number if the property in which the interest is held is different from the case parcel.

City Official \_\_\_\_\_ Partner(s) \_\_\_\_\_

Partner(s) \_\_\_\_\_

- I certify that I am the applicant and that the information submitted with this application is true and accurate to the best of my knowledge and belief. I understand that the City is not responsible for inaccuracies in information presented, and that inaccuracies, false information or incomplete application may cause the application to be rejected. I further certify that I am the owner or purchaser (or option holder) of the property involved in the application, or the lessee or agent fully authorized by the owner to make this submission, as indicated by the owner's signature below.
- Application will not be deemed complete until the submitted materials have been reviewed by Department of Planning for consistency with the Zoning Ordinance.

Property Owner Signature \_\_\_\_\_

An authorized agent may sign in lieu of the property owner for Final Maps, Tentative Maps and Parcel Maps

Print Name CHAD RENNAKER

Subscribed and sworn before me

This 19th day of December, 2024

Caryl L. Bolton

Notary Public in and for said County and State



PROJECT NARRATIVE

APPLICABLE ZONING CODE

LEGEND ZONING MAP

LEGEND - SITE PLAN

VICINITY MAP

ZONING MAP

GENERAL NOTES - SITE PLAN

KEYED NOTES - SITE PLAN

PROJECT DIRECTORY

GENERAL NOTES - SITE PLAN

KEYED NOTES - SITE PLAN

LEGEND - SITE PLAN

VICINITY MAP

ZONING MAP

GENERAL NOTES - SITE PLAN

KEYED NOTES - SITE PLAN

LEGEND - SITE PLAN

VICINITY MAP

ZONING MAP

GENERAL NOTES - SITE PLAN

KEYED NOTES - SITE PLAN



[illegible]

## REFERENCE NOTES SCHEDULE

SYMBOL	DESCRIPTION	QTY
	DECORATIVE ROCK 18" TO 24" RIP-RAP IN WASH AREA	12.443
	ARTIFICIAL TURF AT DOG PARK	475 SF
	3/4" SCREENED DECOMPOSED GRANITE @ 2" DEPTH IN ALL COURT AND PLAY AREAS AND WALKWAYS	115,398.88
	SURFACE SELECT BALLERS DO NOT EXCEED 10" INTO FINISH GRADE	70



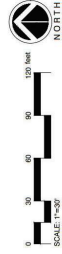
**LAGE**  
design

314 S. WATER STREET  
SUITE 120  
HENDERSON, NV 89015

TEL. (702) 479-5225  
WWW.LAGEDSIGNINC.COM

DBE + WBE

**SILVER DESERT ESTATES**  
HICKAM AVENUE and JORDANVILLE STREET  
CITY of LAS VEGAS



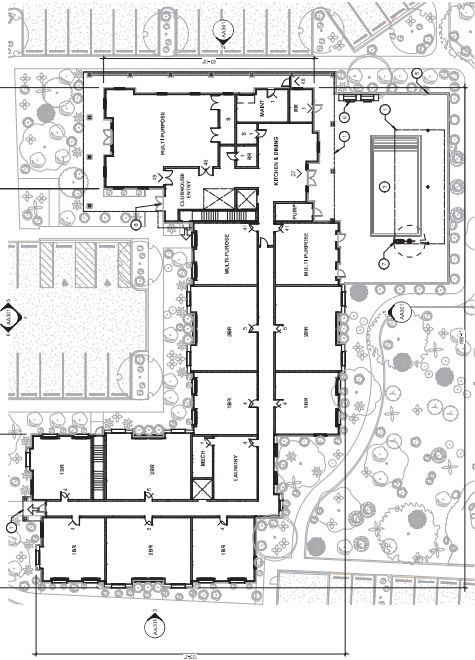
1/9/25  
24070

GENERAL NOTES - FLOOR PLAN

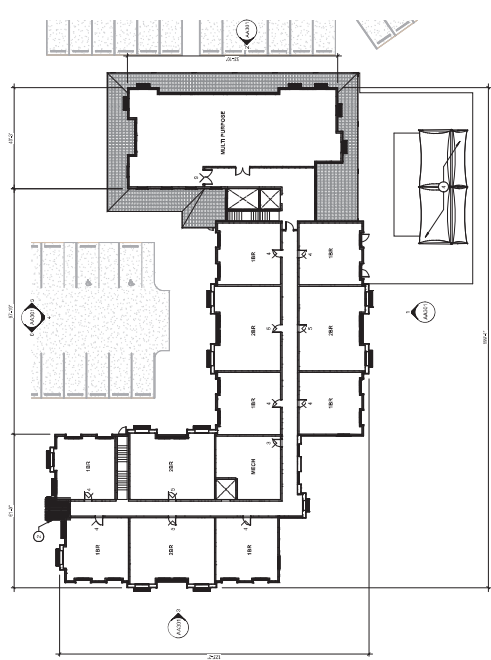
- 1. ALL DIMENSIONS ARE IN FEET AND INCHES.
- 2. ALL DIMENSIONS ARE TO FACE UNLESS NOTED OTHERWISE.
- 3. ALL DIMENSIONS ARE TO FACE UNLESS NOTED OTHERWISE.

KEYED NOTES - FLOOR PLAN

- 1. HORIZONTAL CURTAIN WALL
- 2. WALL
- 3. WINDOW
- 4. DOOR
- 5. STAIR
- 6. ELEVATOR
- 7. MECHANICAL ROOM
- 8. ELECTRICAL ROOM
- 9. PLUMBING ROOM
- 10. JANUARY
- 11. ENTRY
- 12. LOBBY
- 13. RECEPTION
- 14. WAITING AREA
- 15. OFFICE
- 16. CONFERENCE ROOM
- 17. STORAGE
- 18. MECHANICAL ROOM
- 19. ELECTRICAL ROOM
- 20. PLUMBING ROOM
- 21. JANUARY
- 22. ENTRY
- 23. LOBBY
- 24. RECEPTION
- 25. WAITING AREA
- 26. OFFICE
- 27. CONFERENCE ROOM
- 28. STORAGE
- 29. MECHANICAL ROOM
- 30. ELECTRICAL ROOM
- 31. PLUMBING ROOM
- 32. JANUARY
- 33. ENTRY
- 34. LOBBY
- 35. RECEPTION
- 36. WAITING AREA
- 37. OFFICE
- 38. CONFERENCE ROOM
- 39. STORAGE
- 40. MECHANICAL ROOM
- 41. ELECTRICAL ROOM
- 42. PLUMBING ROOM
- 43. JANUARY
- 44. ENTRY
- 45. LOBBY
- 46. RECEPTION
- 47. WAITING AREA
- 48. OFFICE
- 49. CONFERENCE ROOM
- 50. STORAGE
- 51. MECHANICAL ROOM
- 52. ELECTRICAL ROOM
- 53. PLUMBING ROOM
- 54. JANUARY
- 55. ENTRY
- 56. LOBBY
- 57. RECEPTION
- 58. WAITING AREA
- 59. OFFICE
- 60. CONFERENCE ROOM
- 61. STORAGE
- 62. MECHANICAL ROOM
- 63. ELECTRICAL ROOM
- 64. PLUMBING ROOM
- 65. JANUARY
- 66. ENTRY
- 67. LOBBY
- 68. RECEPTION
- 69. WAITING AREA
- 70. OFFICE
- 71. CONFERENCE ROOM
- 72. STORAGE
- 73. MECHANICAL ROOM
- 74. ELECTRICAL ROOM
- 75. PLUMBING ROOM
- 76. JANUARY
- 77. ENTRY
- 78. LOBBY
- 79. RECEPTION
- 80. WAITING AREA
- 81. OFFICE
- 82. CONFERENCE ROOM
- 83. STORAGE
- 84. MECHANICAL ROOM
- 85. ELECTRICAL ROOM
- 86. PLUMBING ROOM
- 87. JANUARY
- 88. ENTRY
- 89. LOBBY
- 90. RECEPTION
- 91. WAITING AREA
- 92. OFFICE
- 93. CONFERENCE ROOM
- 94. STORAGE
- 95. MECHANICAL ROOM
- 96. ELECTRICAL ROOM
- 97. PLUMBING ROOM
- 98. JANUARY
- 99. ENTRY
- 100. LOBBY
- 101. RECEPTION
- 102. WAITING AREA
- 103. OFFICE
- 104. CONFERENCE ROOM
- 105. STORAGE
- 106. MECHANICAL ROOM
- 107. ELECTRICAL ROOM
- 108. PLUMBING ROOM
- 109. JANUARY
- 110. ENTRY
- 111. LOBBY
- 112. RECEPTION
- 113. WAITING AREA
- 114. OFFICE
- 115. CONFERENCE ROOM
- 116. STORAGE
- 117. MECHANICAL ROOM
- 118. ELECTRICAL ROOM
- 119. PLUMBING ROOM
- 120. JANUARY
- 121. ENTRY
- 122. LOBBY
- 123. RECEPTION
- 124. WAITING AREA
- 125. OFFICE
- 126. CONFERENCE ROOM
- 127. STORAGE
- 128. MECHANICAL ROOM
- 129. ELECTRICAL ROOM
- 130. PLUMBING ROOM
- 131. JANUARY
- 132. ENTRY
- 133. LOBBY
- 134. RECEPTION
- 135. WAITING AREA
- 136. OFFICE
- 137. CONFERENCE ROOM
- 138. STORAGE
- 139. MECHANICAL ROOM
- 140. ELECTRICAL ROOM
- 141. PLUMBING ROOM
- 142. JANUARY
- 143. ENTRY
- 144. LOBBY
- 145. RECEPTION
- 146. WAITING AREA
- 147. OFFICE
- 148. CONFERENCE ROOM
- 149. STORAGE
- 150. MECHANICAL ROOM
- 151. ELECTRICAL ROOM
- 152. PLUMBING ROOM
- 153. JANUARY
- 154. ENTRY
- 155. LOBBY
- 156. RECEPTION
- 157. WAITING AREA
- 158. OFFICE
- 159. CONFERENCE ROOM
- 160. STORAGE
- 161. MECHANICAL ROOM
- 162. ELECTRICAL ROOM
- 163. PLUMBING ROOM
- 164. JANUARY
- 165. ENTRY
- 166. LOBBY
- 167. RECEPTION
- 168. WAITING AREA
- 169. OFFICE
- 170. CONFERENCE ROOM
- 171. STORAGE
- 172. MECHANICAL ROOM
- 173. ELECTRICAL ROOM
- 174. PLUMBING ROOM
- 175. JANUARY
- 176. ENTRY
- 177. LOBBY
- 178. RECEPTION
- 179. WAITING AREA
- 180. OFFICE
- 181. CONFERENCE ROOM
- 182. STORAGE
- 183. MECHANICAL ROOM
- 184. ELECTRICAL ROOM
- 185. PLUMBING ROOM
- 186. JANUARY
- 187. ENTRY
- 188. LOBBY
- 189. RECEPTION
- 190. WAITING AREA
- 191. OFFICE
- 192. CONFERENCE ROOM
- 193. STORAGE
- 194. MECHANICAL ROOM
- 195. ELECTRICAL ROOM
- 196. PLUMBING ROOM
- 197. JANUARY
- 198. ENTRY
- 199. LOBBY
- 200. RECEPTION
- 201. WAITING AREA
- 202. OFFICE
- 203. CONFERENCE ROOM
- 204. STORAGE
- 205. MECHANICAL ROOM
- 206. ELECTRICAL ROOM
- 207. PLUMBING ROOM
- 208. JANUARY
- 209. ENTRY
- 210. LOBBY
- 211. RECEPTION
- 212. WAITING AREA
- 213. OFFICE
- 214. CONFERENCE ROOM
- 215. STORAGE
- 216. MECHANICAL ROOM
- 217. ELECTRICAL ROOM
- 218. PLUMBING ROOM
- 219. JANUARY
- 220. ENTRY
- 221. LOBBY
- 222. RECEPTION
- 223. WAITING AREA
- 224. OFFICE
- 225. CONFERENCE ROOM
- 226. STORAGE
- 227. MECHANICAL ROOM
- 228. ELECTRICAL ROOM
- 229. PLUMBING ROOM
- 230. JANUARY
- 231. ENTRY
- 232. LOBBY
- 233. RECEPTION
- 234. WAITING AREA
- 235. OFFICE
- 236. CONFERENCE ROOM
- 237. STORAGE
- 238. MECHANICAL ROOM
- 239. ELECTRICAL ROOM
- 240. PLUMBING ROOM
- 241. JANUARY
- 242. ENTRY
- 243. LOBBY
- 244. RECEPTION
- 245. WAITING AREA
- 246. OFFICE
- 247. CONFERENCE ROOM
- 248. STORAGE
- 249. MECHANICAL ROOM
- 250. ELECTRICAL ROOM
- 251. PLUMBING ROOM
- 252. JANUARY
- 253. ENTRY
- 254. LOBBY
- 255. RECEPTION
- 256. WAITING AREA
- 257. OFFICE
- 258. CONFERENCE ROOM
- 259. STORAGE
- 260. MECHANICAL ROOM
- 261. ELECTRICAL ROOM
- 262. PLUMBING ROOM
- 263. JANUARY
- 264. ENTRY
- 265. LOBBY
- 266. RECEPTION
- 267. WAITING AREA
- 268. OFFICE
- 269. CONFERENCE ROOM
- 270. STORAGE
- 271. MECHANICAL ROOM
- 272. ELECTRICAL ROOM
- 273. PLUMBING ROOM
- 274. JANUARY
- 275. ENTRY
- 276. LOBBY
- 277. RECEPTION
- 278. WAITING AREA
- 279. OFFICE
- 280. CONFERENCE ROOM
- 281. STORAGE
- 282. MECHANICAL ROOM
- 283. ELECTRICAL ROOM
- 284. PLUMBING ROOM
- 285. JANUARY
- 286. ENTRY
- 287. LOBBY
- 288. RECEPTION
- 289. WAITING AREA
- 290. OFFICE
- 291. CONFERENCE ROOM
- 292. STORAGE
- 293. MECHANICAL ROOM
- 294. ELECTRICAL ROOM
- 295. PLUMBING ROOM
- 296. JANUARY
- 297. ENTRY
- 298. LOBBY
- 299. RECEPTION
- 300. WAITING AREA
- 301. OFFICE
- 302. CONFERENCE ROOM
- 303. STORAGE
- 304. MECHANICAL ROOM
- 305. ELECTRICAL ROOM
- 306. PLUMBING ROOM
- 307. JANUARY
- 308. ENTRY
- 309. LOBBY
- 310. RECEPTION
- 311. WAITING AREA
- 312. OFFICE
- 313. CONFERENCE ROOM
- 314. STORAGE
- 315. MECHANICAL ROOM
- 316. ELECTRICAL ROOM
- 317. PLUMBING ROOM
- 318. JANUARY
- 319. ENTRY
- 320. LOBBY
- 321. RECEPTION
- 322. WAITING AREA
- 323. OFFICE
- 324. CONFERENCE ROOM
- 325. STORAGE
- 326. MECHANICAL ROOM
- 327. ELECTRICAL ROOM
- 328. PLUMBING ROOM
- 329. JANUARY
- 330. ENTRY
- 331. LOBBY
- 332. RECEPTION
- 333. WAITING AREA
- 334. OFFICE
- 335. CONFERENCE ROOM
- 336. STORAGE
- 337. MECHANICAL ROOM
- 338. ELECTRICAL ROOM
- 339. PLUMBING ROOM
- 340. JANUARY
- 341. ENTRY
- 342. LOBBY
- 343. RECEPTION
- 344. WAITING AREA
- 345. OFFICE
- 346. CONFERENCE ROOM
- 347. STORAGE
- 348. MECHANICAL ROOM
- 349. ELECTRICAL ROOM
- 350. PLUMBING ROOM
- 351. JANUARY
- 352. ENTRY
- 353. LOBBY
- 354. RECEPTION
- 355. WAITING AREA
- 356. OFFICE
- 357. CONFERENCE ROOM
- 358. STORAGE
- 359. MECHANICAL ROOM
- 360. ELECTRICAL ROOM
- 361. PLUMBING ROOM
- 362. JANUARY
- 363. ENTRY
- 364. LOBBY
- 365. RECEPTION
- 366. WAITING AREA
- 367. OFFICE
- 368. CONFERENCE ROOM
- 369. STORAGE
- 370. MECHANICAL ROOM
- 371. ELECTRICAL ROOM
- 372. PLUMBING ROOM
- 373. JANUARY
- 374. ENTRY
- 375. LOBBY
- 376. RECEPTION
- 377. WAITING AREA
- 378. OFFICE
- 379. CONFERENCE ROOM
- 380. STORAGE
- 381. MECHANICAL ROOM
- 382. ELECTRICAL ROOM
- 383. PLUMBING ROOM
- 384. JANUARY
- 385. ENTRY
- 386. LOBBY
- 387. RECEPTION
- 388. WAITING AREA
- 389. OFFICE
- 390. CONFERENCE ROOM
- 391. STORAGE
- 392. MECHANICAL ROOM
- 393. ELECTRICAL ROOM
- 394. PLUMBING ROOM
- 395. JANUARY
- 396. ENTRY
- 397. LOBBY
- 398. RECEPTION
- 399. WAITING AREA
- 400. OFFICE
- 401. CONFERENCE ROOM
- 402. STORAGE
- 403. MECHANICAL ROOM
- 404. ELECTRICAL ROOM
- 405. PLUMBING ROOM
- 406. JANUARY
- 407. ENTRY
- 408. LOBBY
- 409. RECEPTION
- 410. WAITING AREA
- 411. OFFICE
- 412. CONFERENCE ROOM
- 413. STORAGE
- 414. MECHANICAL ROOM
- 415. ELECTRICAL ROOM
- 416. PLUMBING ROOM
- 417. JANUARY
- 418. ENTRY
- 419. LOBBY
- 420. RECEPTION
- 421. WAITING AREA
- 422. OFFICE
- 423. CONFERENCE ROOM
- 424. STORAGE
- 425. MECHANICAL ROOM
- 426. ELECTRICAL ROOM
- 427. PLUMBING ROOM
- 428. JANUARY
- 429. ENTRY
- 430. LOBBY
- 431. RECEPTION
- 432. WAITING AREA
- 433. OFFICE
- 434. CONFERENCE ROOM
- 435. STORAGE
- 436. MECHANICAL ROOM
- 437. ELECTRICAL ROOM
- 438. PLUMBING ROOM
- 439. JANUARY
- 440. ENTRY
- 441. LOBBY
- 442. RECEPTION
- 443. WAITING AREA
- 444. OFFICE
- 445. CONFERENCE ROOM
- 446. STORAGE
- 447. MECHANICAL ROOM
- 448. ELECTRICAL ROOM
- 449. PLUMBING ROOM
- 450. JANUARY
- 451. ENTRY
- 452. LOBBY
- 453. RECEPTION
- 454. WAITING AREA
- 455. OFFICE
- 456. CONFERENCE ROOM
- 457. STORAGE
- 458. MECHANICAL ROOM
- 459. ELECTRICAL ROOM
- 460. PLUMBING ROOM
- 461. JANUARY
- 462. ENTRY
- 463. LOBBY
- 464. RECEPTION
- 465. WAITING AREA
- 466. OFFICE
- 467. CONFERENCE ROOM
- 468. STORAGE
- 469. MECHANICAL ROOM
- 470. ELECTRICAL ROOM
- 471. PLUMBING ROOM
- 472. JANUARY
- 473. ENTRY
- 474. LOBBY
- 475. RECEPTION
- 476. WAITING AREA
- 477. OFFICE
- 478. CONFERENCE ROOM
- 479. STORAGE
- 480. MECHANICAL ROOM
- 481. ELECTRICAL ROOM
- 482. PLUMBING ROOM
- 483. JANUARY
- 484. ENTRY
- 485. LOBBY
- 486. RECEPTION
- 487. WAITING AREA
- 488. OFFICE
- 489. CONFERENCE ROOM
- 490. STORAGE
- 491. MECHANICAL ROOM
- 492. ELECTRICAL ROOM
- 493. PLUMBING ROOM
- 494. JANUARY
- 495. ENTRY
- 496. LOBBY
- 497. RECEPTION
- 498. WAITING AREA
- 499. OFFICE
- 500. CONFERENCE ROOM
- 501. STORAGE
- 502. MECHANICAL ROOM
- 503. ELECTRICAL ROOM
- 504. PLUMBING ROOM
- 505. JANUARY
- 506. ENTRY
- 507. LOBBY
- 508. RECEPTION
- 509. WAITING AREA
- 510. OFFICE
- 511. CONFERENCE ROOM
- 512. STORAGE
- 513. MECHANICAL ROOM
- 514. ELECTRICAL ROOM
- 515. PLUMBING ROOM
- 516. JANUARY
- 517. ENTRY
- 518. LOBBY
- 519. RECEPTION
- 520. WAITING AREA
- 521. OFFICE
- 522. CONFERENCE ROOM
- 523. STORAGE
- 524. MECHANICAL ROOM
- 525. ELECTRICAL ROOM
- 526. PLUMBING ROOM
- 527. JANUARY
- 528. ENTRY
- 529. LOBBY
- 530. RECEPTION
- 531. WAITING AREA
- 532. OFFICE
- 533. CONFERENCE ROOM
- 534. STORAGE
- 535. MECHANICAL ROOM
- 536. ELECTRICAL ROOM
- 537. PLUMBING ROOM
- 538. JANUARY
- 539. ENTRY
- 540. LOBBY
- 541. RECEPTION
- 542. WAITING AREA
- 543. OFFICE
- 544. CONFERENCE ROOM
- 545. STORAGE
- 546. MECHANICAL ROOM
- 547. ELECTRICAL ROOM
- 548. PLUMBING ROOM
- 549. JANUARY
- 550. ENTRY
- 551. LOBBY
- 552. RECEPTION
- 553. WAITING AREA
- 554. OFFICE
- 555. CONFERENCE ROOM
- 556. STORAGE
- 557. MECHANICAL ROOM
- 558. ELECTRICAL ROOM
- 559. PLUMBING ROOM
- 560. JANUARY
- 561. ENTRY
- 562. LOBBY
- 563. RECEPTION
- 564. WAITING AREA
- 565. OFFICE
- 566. CONFERENCE ROOM
- 567. STORAGE
- 568. MECHANICAL ROOM
- 569. ELECTRICAL ROOM
- 570. PLUMBING ROOM
- 571. JANUARY
- 572. ENTRY
- 573. LOBBY
- 574. RECEPTION
- 575. WAITING AREA
- 576. OFFICE
- 577. CONFERENCE ROOM
- 578. STORAGE
- 579. MECHANICAL ROOM
- 580. ELECTRICAL ROOM
- 581. PLUMBING ROOM
- 582. JANUARY
- 583. ENTRY
- 584. LOBBY
- 585. RECEPTION
- 586. WAITING AREA
- 587. OFFICE
- 588. CONFERENCE ROOM
- 589. STORAGE
- 590. MECHANICAL ROOM
- 591. ELECTRICAL ROOM
- 592. PLUMBING ROOM
- 593. JANUARY
- 594. ENTRY
- 595. LOBBY
- 596. RECEPTION
- 597. WAITING AREA
- 598. OFFICE
- 599. CONFERENCE ROOM
- 600. STORAGE
- 601. MECHANICAL ROOM
- 602. ELECTRICAL ROOM
- 603. PLUMBING ROOM
- 604. JANUARY
- 605. ENTRY
- 606. LOBBY
- 607. RECEPTION
- 608. WAITING AREA
- 609. OFFICE
- 610. CONFERENCE ROOM
- 611. STORAGE
- 612. MECHANICAL ROOM
- 613. ELECTRICAL ROOM
- 614. PLUMBING ROOM
- 615. JANUARY
- 616. ENTRY
- 617. LOBBY
- 618. RECEPTION
- 619. WAITING AREA
- 620. OFFICE
- 621. CONFERENCE ROOM
- 622. STORAGE
- 623. MECHANICAL ROOM
- 624. ELECTRICAL ROOM
- 625. PLUMBING ROOM
- 626. JANUARY
- 627. ENTRY
- 628. LOBBY
- 629. RECEPTION
- 630. WAITING AREA
- 631. OFFICE
- 632. CONFERENCE ROOM
- 633. STORAGE
- 634. MECHANICAL ROOM
- 635. ELECTRICAL ROOM
- 636. PLUMBING ROOM
- 637. JANUARY
- 638. ENTRY
- 639. LOBBY
- 640. RECEPTION
- 641. WAITING AREA
- 642. OFFICE
- 643. CONFERENCE ROOM
- 644. STORAGE
- 645. MECHANICAL ROOM
- 646. ELECTRICAL ROOM
- 647. PLUMBING ROOM
- 648. JANUARY
- 649. ENTRY
- 650. LOBBY
- 651. RECEPTION
- 652. WAITING AREA
- 653. OFFICE
- 654. CONFERENCE ROOM
- 655. STORAGE
- 656. MECHANICAL ROOM
- 657. ELECTRICAL ROOM
- 658. PLUMBING ROOM
- 659. JANUARY
- 660. ENTRY
- 661. LOBBY
- 662. RECEPTION
- 663. WAITING AREA
- 664. OFFICE
- 665. CONFERENCE ROOM
- 666. STORAGE
- 667. MECHANICAL ROOM
- 668. ELECTRICAL ROOM
- 669. PLUMBING ROOM
- 670. JANUARY
- 671. ENTRY
- 672. LOBBY
- 673. RECEPTION
- 674. WAITING AREA
- 675. OFFICE
- 676. CONFERENCE ROOM
- 677. STORAGE
- 678. MECHANICAL ROOM
- 679. ELECTRICAL ROOM
- 680. PLUMBING ROOM
- 681. JANUARY
- 682. ENTRY
- 683. LOBBY
- 684. RECEPTION
- 685. WAITING AREA
- 686. OFFICE
- 687. CONFERENCE ROOM
- 688. STORAGE
- 689. MECHANICAL ROOM
- 690. ELECTRICAL ROOM
- 691. PLUMBING ROOM
- 692. JANUARY
- 693. ENTRY
- 694. LOBBY
- 695. RECEPTION
- 696. WAITING AREA
- 697. OFFICE
- 698. CONFERENCE ROOM
- 699. STORAGE
- 700. MECHANICAL ROOM
- 701. ELECTRICAL ROOM
- 702. PLUMBING ROOM
- 703. JANUARY
- 704. ENTRY
- 705. LOBBY
- 706. RECEPTION
- 707. WAITING AREA
- 708. OFFICE
- 709. CONFERENCE ROOM
- 710. STORAGE
- 711. MECHANICAL ROOM
- 712. ELECTRICAL ROOM
- 713. PLUMBING ROOM
- 714. JANUARY
- 715. ENTRY
- 716. LOBBY
- 717. RECEPTION
- 718. WAITING AREA
- 719. OFFICE
- 720. CONFERENCE ROOM
- 721. STORAGE
- 722. MECHANICAL ROOM
- 723. ELECTRICAL ROOM
- 724. PLUMBING ROOM
- 725. JANUARY
- 726. ENTRY
- 727. LOBBY
- 728. RECEPTION
- 729. WAITING AREA
- 730. OFFICE
- 731. CONFERENCE ROOM
- 732. STORAGE
- 733. MECHANICAL ROOM
- 734. ELECTRICAL ROOM
- 735. PLUMBING ROOM
- 736. JANUARY
- 737. ENTRY
- 738. LOBBY
- 739. RECEPTION
- 740. WAITING AREA
- 741. OFFICE
- 742. CONFERENCE ROOM
- 743. STORAGE
- 744. MECHANICAL ROOM
- 745. ELECTRICAL ROOM
- 746. PLUMBING ROOM
- 747. JANUARY
- 748. ENTRY
- 749. LOBBY
- 750. RECEPTION
- 751. WAITING AREA
- 752. OFFICE
- 753. CONFERENCE ROOM
- 754. STORAGE
- 755. MECHANICAL ROOM
- 756. ELECTRICAL ROOM
- 757. PLUMBING ROOM
- 758. JANUARY
- 759. ENTRY
- 760. LOBBY
- 761. RECEPTION
- 762. WAITING AREA
- 763. OFFICE
- 764. CONFERENCE ROOM
- 765. STORAGE
- 766. MECHANICAL ROOM
- 767. ELECTRICAL ROOM
- 768. PLUMBING ROOM
- 769. JANUARY
- 770. ENTRY
- 771. LOBBY
- 772. RECEPTION
- 773. WAITING AREA
- 774. OFFICE
- 775. CONFERENCE ROOM
- 776. STORAGE
- 777. MECHANICAL ROOM
- 778. ELECTRICAL ROOM
- 779. PLUMBING ROOM
- 780. JANUARY
- 781. ENTRY
- 782. LOBBY
- 783. RECEPTION
- 784. WAITING AREA
- 785. OFFICE
- 786. CONFERENCE ROOM
- 787. STORAGE
- 788. MECHANICAL ROOM
- 789. ELECTRICAL ROOM
- 790. PLUMBING ROOM
- 791. JANUARY
- 792. ENTRY
- 793. LOBBY
- 794. RECEPTION
- 795. WAITING AREA
- 796. OFFICE
- 797. CONFERENCE ROOM
- 798. STORAGE
- 799. MECHANICAL ROOM
- 800. ELECTRICAL ROOM
- 801. PLUMBING ROOM
- 802. JANUARY
- 803. ENTRY
- 804. LOBBY
- 805. RECEPTION
- 806. WAITING AREA
- 807. OFFICE
- 808. CONFERENCE ROOM
- 809. STORAGE
- 810. MECHANICAL ROOM
- 811. ELECTRICAL ROOM
- 812. PLUMBING ROOM
- 813. JANUARY
- 814. ENTRY
- 815. LOBBY
- 816. RECEPTION
- 817. WAITING AREA
- 818. OFFICE
- 819. CONFERENCE ROOM
- 820. STORAGE
- 821. MECHANICAL ROOM
- 822. ELECTRICAL ROOM
- 823. PLUMBING ROOM
- 824. JANUARY
- 825. ENTRY
- 826. LOBBY
- 827. RECEPTION
- 828. WAITING AREA
- 829. OFFICE
- 830. CONFERENCE ROOM
- 831. STORAGE
- 832. MECHANICAL ROOM
- 833. ELECTRICAL ROOM
- 834. PLUMBING ROOM
- 835. JANUARY
- 836. ENTRY
- 837. LOBBY
- 838. RECEPTION
- 839. WAITING AREA
- 840. OFFICE
- 841. CONFERENCE ROOM
- 842. STORAGE
- 843. MECHANICAL ROOM
- 844. ELECTRICAL ROOM
- 845. PLUMBING ROOM
- 846. JANUARY
- 847. ENTRY
- 848. LOBBY
- 849. RECEPTION
- 850. WAITING AREA
- 851. OFFICE
- 852. CONFERENCE ROOM
- 853. STORAGE
- 854. MECHANICAL ROOM
- 855. ELECTRICAL ROOM
- 856. PLUMBING ROOM
- 857. JANUARY
- 858. ENTRY
- 859. LOBBY
- 860. RECEPTION
- 861. WAITING AREA
- 862. OFFICE
- 863. CONFERENCE ROOM
- 864. STORAGE
- 865. MECHANICAL ROOM
- 866. ELECTRICAL ROOM
- 867. PLUMBING ROOM
- 868. JANUARY
- 869. ENTRY
- 870. LOBBY
- 871. RECEPTION
- 872. WAITING AREA
- 873. OFFICE
- 874. CONFERENCE ROOM
- 875. STORAGE
- 876. MECHANICAL ROOM
- 877. ELECTRICAL ROOM
- 878. PLUMBING ROOM
- 879. JANUARY
- 880. ENTRY
- 881. LOBBY
- 882. RECEPTION
- 883. WAITING AREA
- 884. OFFICE
- 885. CONFERENCE ROOM
- 886. STORAGE
- 887. MECHANICAL ROOM
- 888. ELECTRICAL ROOM
- 889. PLUMBING ROOM
- 890. JANUARY
- 891. ENTRY
- 892. LOBBY
- 893. RECEPTION
- 894. WAITING AREA
- 895. OFFICE
- 896. CONFERENCE ROOM
- 897. STORAGE
- 898. MECHANICAL ROOM
- 899. ELECTRICAL ROOM
- 900. PLUMBING ROOM
- 901. JANUARY
- 902. ENTRY
- 903. LOBBY
- 904. RECEPTION
- 905. WAITING AREA
- 906. OFFICE
- 907. CONFERENCE ROOM
- 908. STORAGE
- 909. MECHANICAL ROOM
- 910. ELECTRICAL ROOM
- 911. PLUMBING ROOM
- 912. JANUARY
- 913. ENTRY
- 914. LOBBY
- 915. RECEPTION
- 916. WAITING AREA
- 917. OFFICE
- 918. CONFERENCE ROOM
- 919. STORAGE
- 920. MECHANICAL ROOM
- 921. ELECTRICAL ROOM
- 922. PLUMBING ROOM
- 923. JANUARY
- 924. ENTRY
- 925. LOBBY
- 926. RECEPTION
- 927. WAITING AREA
- 928. OFFICE
- 929. CONFERENCE ROOM
- 930. STORAGE
- 931. MECHANICAL ROOM
- 932. ELECTRICAL ROOM
- 933. PLUMBING ROOM
- 934. JANUARY
- 935. ENTRY
- 936. LOBBY
- 937. RECEPTION
- 938. WAITING AREA
- 939. OFFICE
- 940. CONFERENCE ROOM
- 941. STORAGE
- 942. MECHANICAL ROOM
- 943. ELECTRICAL ROOM
- 944. PLUMBING ROOM
- 945. JANUARY
- 946. ENTRY
- 947. LOBBY
- 948. RECEPTION
- 949. WAITING AREA
- 950. OFFICE
- 951. CONFERENCE ROOM
- 952. STORAGE
- 953. MECHANICAL ROOM
- 954. ELECTRICAL ROOM
- 955. PLUMBING ROOM
- 956. JANUARY
- 957. ENTRY
- 958. LOBBY
- 959. RECEPTION
- 960. WAITING AREA
- 961. OFFICE
- 962. CONFERENCE ROOM
- 963. STORAGE
- 964. MECHANICAL ROOM
- 965. ELECTRICAL ROOM
- 966. PLUMBING ROOM
- 967. JANUARY
- 968. ENTRY
- 969. LOBBY
- 970. RECEPTION
- 971. WAITING AREA
- 972. OFFICE
- 973. CONFERENCE ROOM
- 974. STORAGE
- 975. MECHANICAL ROOM
- 976. ELECTRICAL ROOM
- 977. PLUMBING ROOM
- 978. JANUARY
- 979. ENTRY
- 980. LOBBY
- 981. RECEPTION
- 982. WAITING AREA
- 983. OFFICE
- 984. CONFERENCE ROOM
- 985. STORAGE
- 986. MECHANICAL ROOM
- 987. ELECTRICAL ROOM
- 988. PLUMBING ROOM
- 989. JANUARY
- 990. ENTRY
- 991. LOBBY
- 992. RECEPTION
- 993. WAITING AREA
- 994. OFFICE
- 995. CONFERENCE ROOM
- 996. STORAGE
- 997. MECHANICAL ROOM
- 998. ELECTRICAL ROOM
- 999. PLUMBING ROOM
- 1000. JANUARY

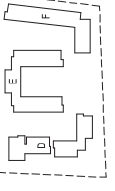


1 FLOOR PLAN - LEVEL 01



2 FLOOR PLAN - LEVEL 02

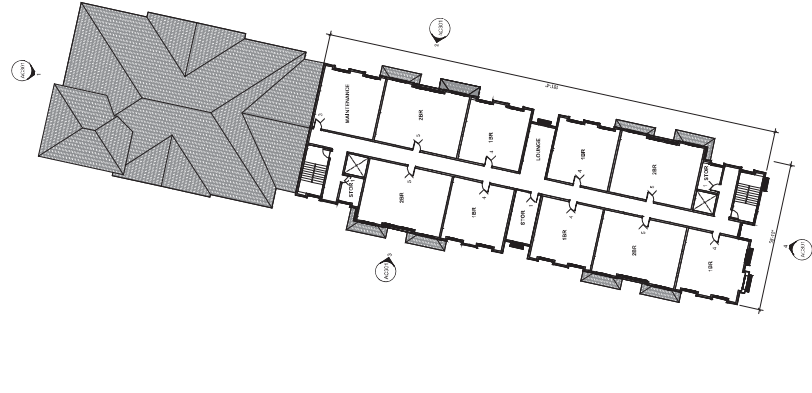
240668  
01/29/2025



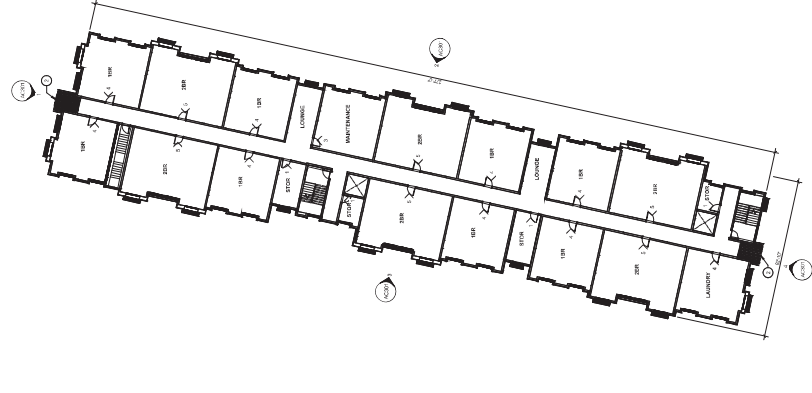
SITE KEY PLAN



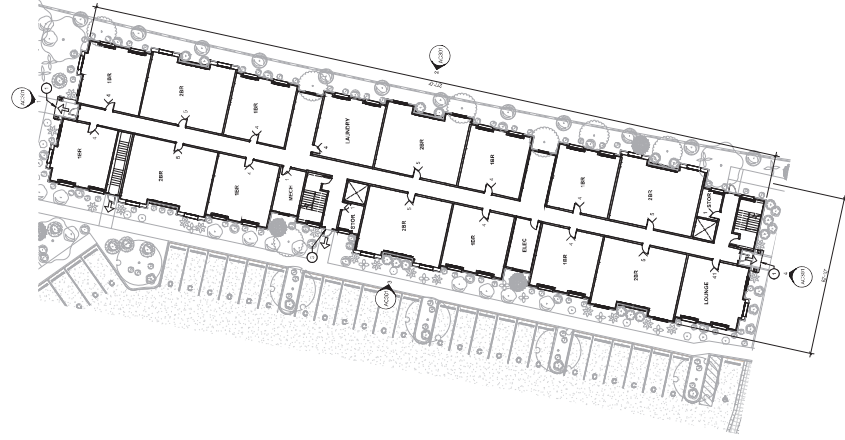




③ FLOOR PLAN - LEVEL 03  
110' x 140'



② FLOOR PLAN - LEVEL 02  
110' x 140'



① FLOOR PLAN - LEVEL 01  
110' x 140'

**GENERAL NOTES - FLOOR PLAN**

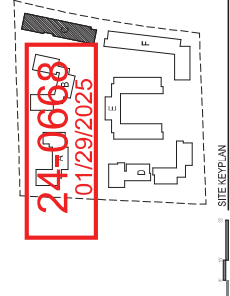
1. ALL ROOMS SHALL BE FINISHED TO THE FINISHES SHOWN ON THE FINISH SCHEDULE.
2. ALL ROOMS SHALL BE FINISHED TO THE FINISHES SHOWN ON THE FINISH SCHEDULE.
3. ALL ROOMS SHALL BE FINISHED TO THE FINISHES SHOWN ON THE FINISH SCHEDULE.

**KEYED NOTES - FLOOR PLAN**

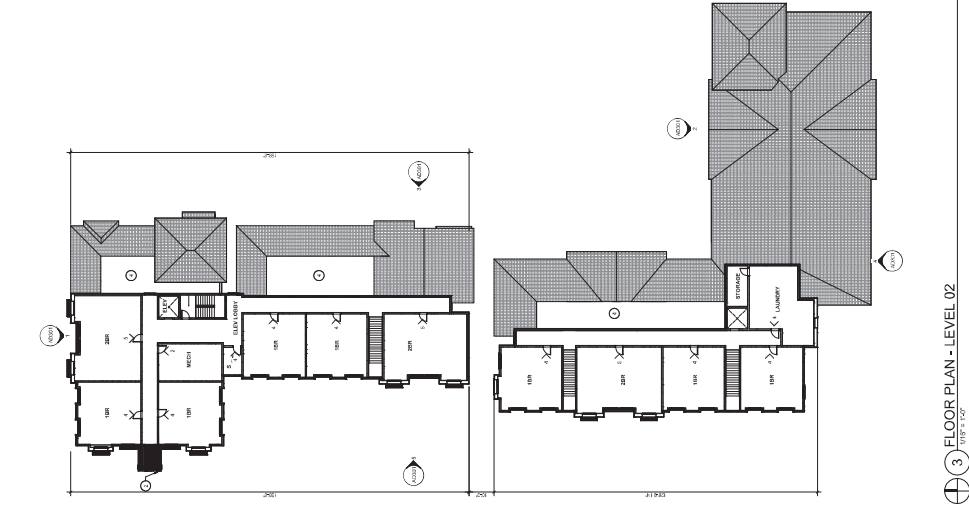
1. HALLWAYS SHALL BE FINISHED TO THE FINISHES SHOWN ON THE FINISH SCHEDULE.
2. HALLWAYS SHALL BE FINISHED TO THE FINISHES SHOWN ON THE FINISH SCHEDULE.
3. HALLWAYS SHALL BE FINISHED TO THE FINISHES SHOWN ON THE FINISH SCHEDULE.

**LEGEND - FLOOR PLAN**

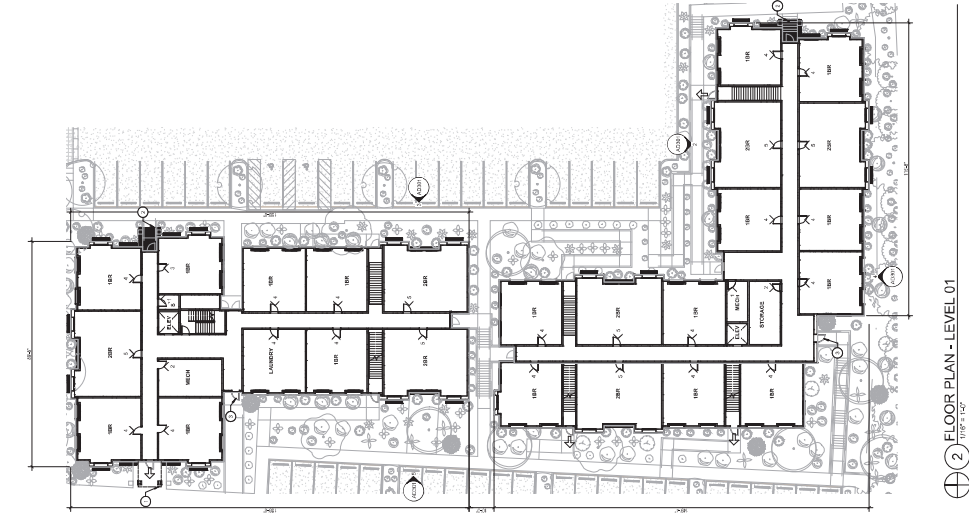
- 1. HALLWAYS
- 2. HALLWAYS
- 3. HALLWAYS



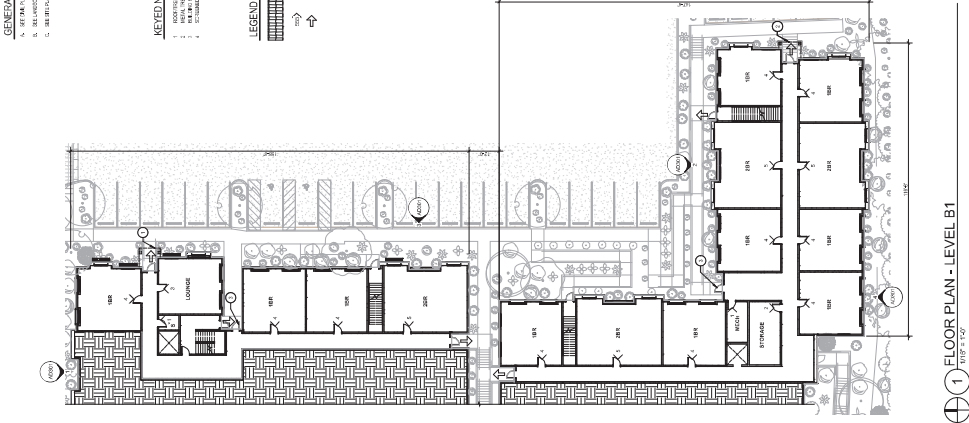




3 FLOOR PLAN - LEVEL 02  
11/08' x 102'



2 FLOOR PLAN - LEVEL 01  
11/08' x 102'



1 FLOOR PLAN - LEVEL B1  
11/08' x 102'

**GENERAL NOTES - FLOOR PLAN**

- 1. ALL DIMENSIONS ARE IN FEET AND INCHES.
- 2. ALL DIMENSIONS ARE TO THE CENTERLINE OF THE WALL OR THE CENTERLINE OF THE CURB.
- 3. ALL DIMENSIONS ARE TO THE CENTERLINE OF THE WALL OR THE CENTERLINE OF THE CURB.

**KEYED NOTES - FLOOR PLAN**

- 1. ALL DIMENSIONS ARE IN FEET AND INCHES.
- 2. ALL DIMENSIONS ARE TO THE CENTERLINE OF THE WALL OR THE CENTERLINE OF THE CURB.
- 3. ALL DIMENSIONS ARE TO THE CENTERLINE OF THE WALL OR THE CENTERLINE OF THE CURB.

**LEGEND - FLOOR PLAN**

- 1. ALL DIMENSIONS ARE IN FEET AND INCHES.
- 2. ALL DIMENSIONS ARE TO THE CENTERLINE OF THE WALL OR THE CENTERLINE OF THE CURB.
- 3. ALL DIMENSIONS ARE TO THE CENTERLINE OF THE WALL OR THE CENTERLINE OF THE CURB.

**SERA**

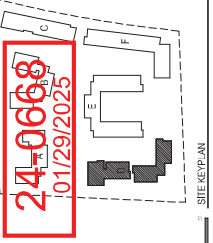
ARCHITECTURE  
DESIGN & PLANNING  
INTERIOR DESIGN

DESIGN & PLANNING  
INTERIOR DESIGN

DESIGN & PLANNING  
INTERIOR DESIGN

SILVER DESERT ESTATES - BUILDING D

DESIGN & PLANNING  
INTERIOR DESIGN



CONCEPTUAL DESIGN

FLOOR PLANS  
AD101





LEGEND - FLOOR PLAN

KEYED NOTES - FLOOR PLAN

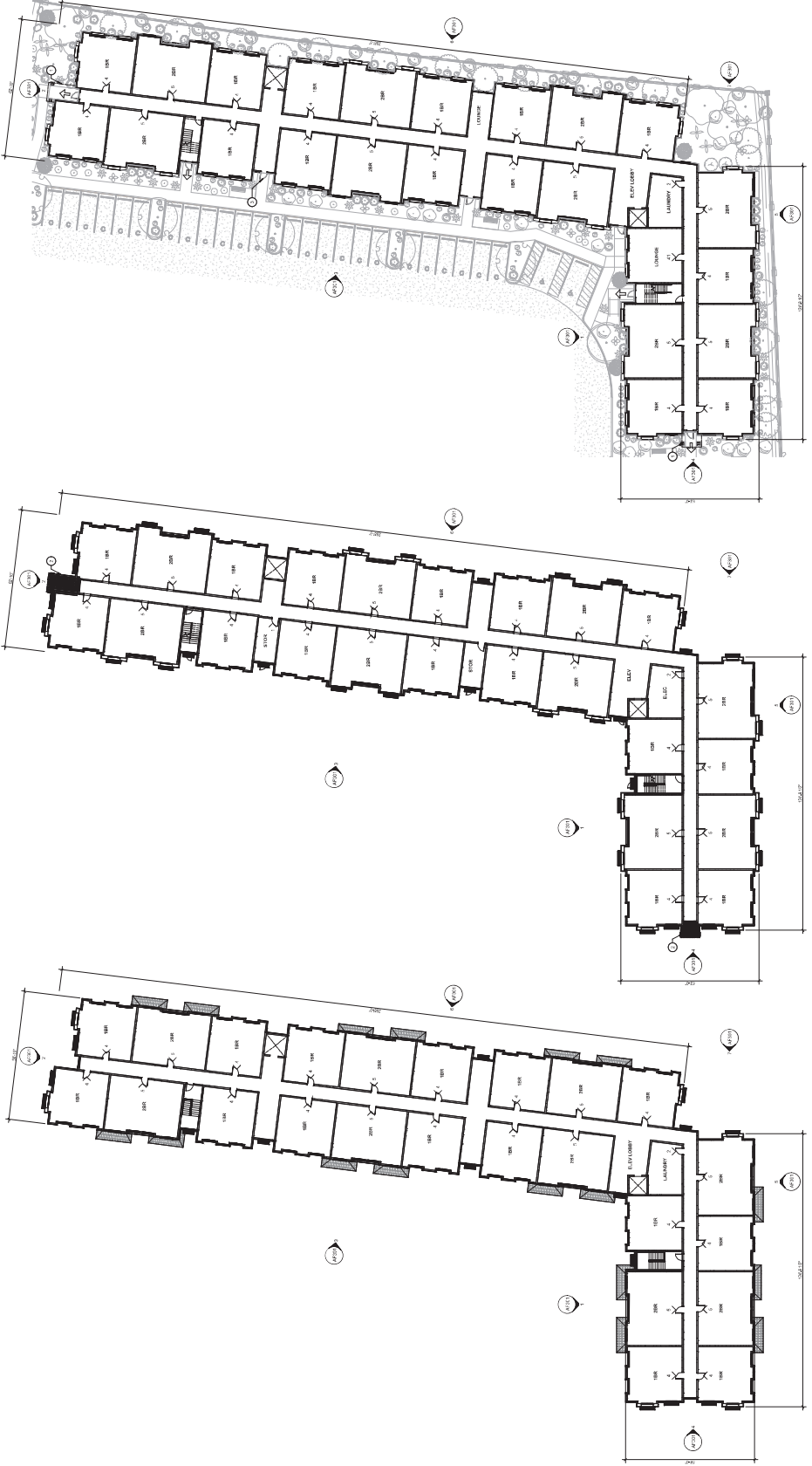
GENERAL NOTES - FLOOR PLAN

SERA

ARCHITECTURE  
DESIGN DESERT ESTATES - PLANNING  
DESIGN DESERT ESTATES - PLANNING

DESIGN DESERT ESTATES - PLANNING  
DESIGN DESERT ESTATES - PLANNING

DESIGN DESERT ESTATES - PLANNING  
DESIGN DESERT ESTATES - PLANNING



1 FLOOR PLAN - LEVEL 01  
11/10/2023

2 FLOOR PLAN - LEVEL 02  
11/10/2023

3 FLOOR PLAN - LEVEL 03  
11/10/2023

SILVER DESERT ESTATES - BUILDING F

DESIGN

DESIGN DESERT ESTATES - PLANNING  
DESIGN DESERT ESTATES - PLANNING

DESIGN DESERT ESTATES - PLANNING  
DESIGN DESERT ESTATES - PLANNING

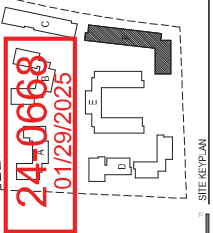
DESIGN DESERT ESTATES - PLANNING  
DESIGN DESERT ESTATES - PLANNING

DESIGN DESERT ESTATES - PLANNING  
DESIGN DESERT ESTATES - PLANNING

DESIGN DESERT ESTATES - PLANNING  
DESIGN DESERT ESTATES - PLANNING

DESIGN DESERT ESTATES - PLANNING  
DESIGN DESERT ESTATES - PLANNING

DESIGN DESERT ESTATES - PLANNING  
DESIGN DESERT ESTATES - PLANNING



CONCEPTUAL DESIGN  
DESIGN DESERT ESTATES - PLANNING  
DESIGN DESERT ESTATES - PLANNING

FLOOR PLANS  
AF101

**LEGEND - EXTERIOR ELEVATION MATERIALS**

- |   |                         |
|---|-------------------------|
|  | STUCCO                  |
|  | STUCCO FIN              |
|  | TERRAZZO (ROOFING) TILE |





24-0668  
12/20/2024

GENERAL NOTES - EXTERIOR ELEVATION

A. EXTERIOR ELEVATION SHALL BE BASED ON THE EXTERIOR ELEVATION DRAWING. THE EXTERIOR ELEVATION SHALL BE BASED ON THE EXTERIOR ELEVATION DRAWING. THE EXTERIOR ELEVATION SHALL BE BASED ON THE EXTERIOR ELEVATION DRAWING.

B. EXTERIOR ELEVATION SHALL BE BASED ON THE EXTERIOR ELEVATION DRAWING. THE EXTERIOR ELEVATION SHALL BE BASED ON THE EXTERIOR ELEVATION DRAWING. THE EXTERIOR ELEVATION SHALL BE BASED ON THE EXTERIOR ELEVATION DRAWING.

C. EXTERIOR ELEVATION SHALL BE BASED ON THE EXTERIOR ELEVATION DRAWING. THE EXTERIOR ELEVATION SHALL BE BASED ON THE EXTERIOR ELEVATION DRAWING. THE EXTERIOR ELEVATION SHALL BE BASED ON THE EXTERIOR ELEVATION DRAWING.

KEYED NOTES - EXTERIOR ELEVATION

1. MATERIALS

2. FINISHES

3. COLORS

4. SHADING

5. HATCHES

6. DIMENSIONS

7. NOTES

8. REFERENCES

9. OTHER

LEGEND - EXTERIOR ELEVATION MATERIALS

1. MATERIALS

2. FINISHES

3. COLORS

4. SHADING

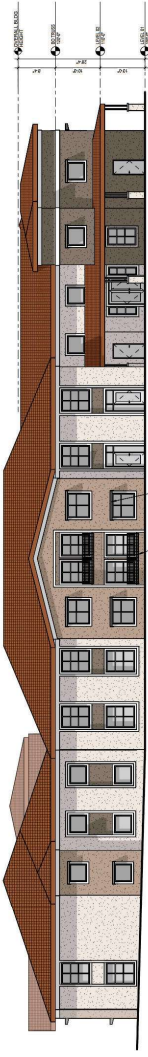
5. HATCHES

6. DIMENSIONS

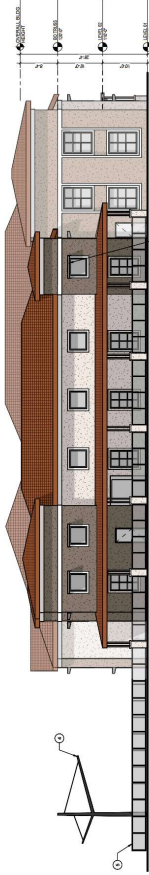
7. NOTES

8. REFERENCES

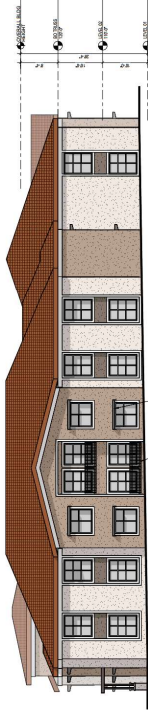
9. OTHER



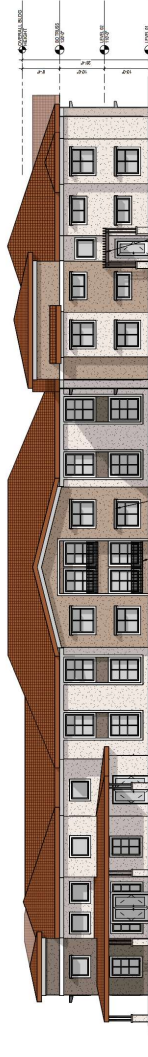
1 BUILDING A ELEVATION - SOUTH  
1/8" = 1'-0"



2 BUILDING A ELEVATION - EAST  
1/8" = 1'-0"



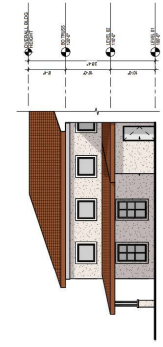
3 BUILDING A ELEVATION - WEST  
1/8" = 1'-0"



4 BUILDING A ELEVATION - NORTH  
1/8" = 1'-0"



5 BUILDING A ELEVATION - COURTYARD LOOKING WEST  
1/8" = 1'-0"



6 BUILDING A ELEVATION - COURTYARD LOOKING EAST  
1/8" = 1'-0"

24-0668  
12/20/2024

GENERAL NOTES - EXTERIOR ELEVATION

A. EXTERIOR ELEVATION SHALL BE BASED ON THE EXTERIOR ELEVATION DRAWING. ALL MATERIALS AND FINISHES SHALL BE AS SHOWN ON THE EXTERIOR ELEVATION DRAWING.

B. EXTERIOR ELEVATION SHALL BE BASED ON THE EXTERIOR ELEVATION DRAWING. ALL MATERIALS AND FINISHES SHALL BE AS SHOWN ON THE EXTERIOR ELEVATION DRAWING.

C. EXTERIOR ELEVATION SHALL BE BASED ON THE EXTERIOR ELEVATION DRAWING. ALL MATERIALS AND FINISHES SHALL BE AS SHOWN ON THE EXTERIOR ELEVATION DRAWING.

NOTES - EXTERIOR ELEVATION

A. EXTERIOR ELEVATION SHALL BE BASED ON THE EXTERIOR ELEVATION DRAWING. ALL MATERIALS AND FINISHES SHALL BE AS SHOWN ON THE EXTERIOR ELEVATION DRAWING.

B. EXTERIOR ELEVATION SHALL BE BASED ON THE EXTERIOR ELEVATION DRAWING. ALL MATERIALS AND FINISHES SHALL BE AS SHOWN ON THE EXTERIOR ELEVATION DRAWING.

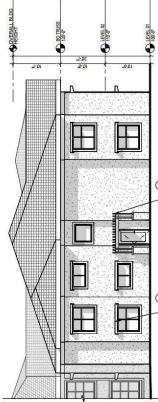
C. EXTERIOR ELEVATION SHALL BE BASED ON THE EXTERIOR ELEVATION DRAWING. ALL MATERIALS AND FINISHES SHALL BE AS SHOWN ON THE EXTERIOR ELEVATION DRAWING.

LEGEND - EXTERIOR ELEVATION MATERIALS

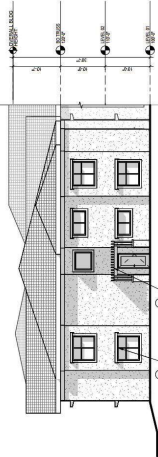
1. EXTERIOR ELEVATION MATERIALS

2. EXTERIOR ELEVATION MATERIALS

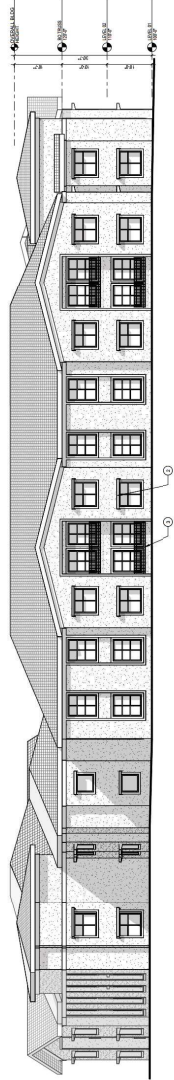
3. EXTERIOR ELEVATION MATERIALS



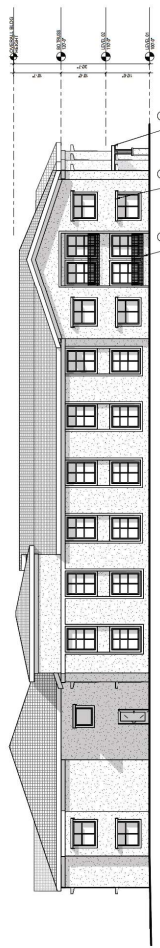
1 BUILDING B ELEVATION - NORTH  
1/8" = 1'-0"



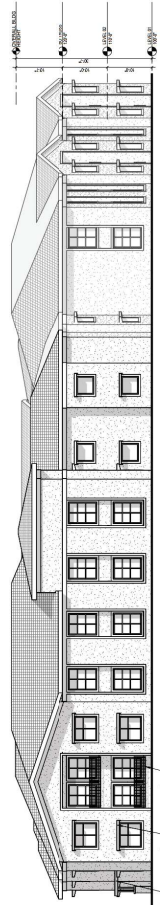
2 BUILDING B ELEVATION - NORTH OBlique  
1/8" = 1'-0"



3 BUILDING B ELEVATION - SOUTH  
1/8" = 1'-0"



4 BUILDING B ELEVATION - EAST  
1/8" = 1'-0"



5 BUILDING B ELEVATION - WEST  
1/8" = 1'-0"



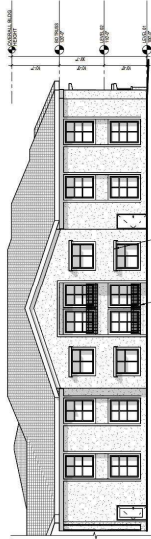
**GENERAL NOTES - EXTERIOR ELEVATION**

1. REFLECTION NOTES APPLY TO THIS SERIES SHEET. ALL OTHER NOTES MAY NOT OCCUR ON THIS SHEET AND DO NOT APPLY TO ANY OTHER SHEETS EXCEPT THOSE NOTED.
2. BUILDING HEIGHT IS TAKEN TO TOP OF ROOF OR HIGHEST GABLE.
3. OFFICE LINES VARY, SEE CIV. DRAWINGS.

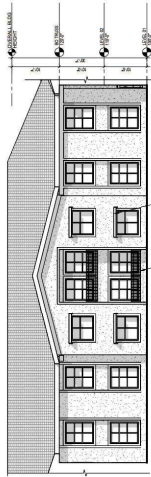
KEYED NOTES - EXTERIOR ELEVATION

**LEGEND - EXTERIOR ELEVATION MATERIALS**

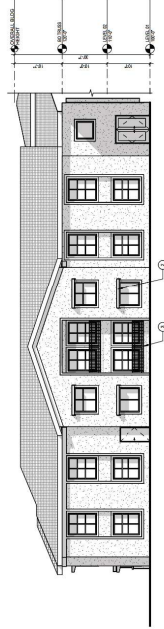
STRUCTURE  
STRUCTURE  
TERRACE



1 BUILDING B ELEVATION - COURTYARD LOOKING WEST  
1/8" = 1'-0"



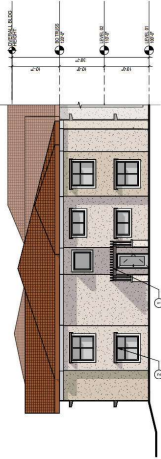
**3 BUILDING B ELEVATION - COURTYARD LOOKING SOUTH**  
1/8" = 1'-0"



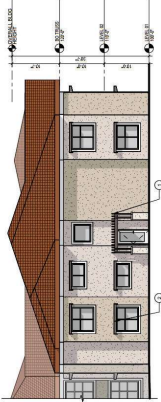
**2 BUILDING ELEVATION - COURTYARD LOOKING EAST**  
1/8" = 1'-0"

24-0668  
12/20/2024

GENERAL NOTES - EXTERIOR ELEVATION  
A. EXTERIOR ELEVATION SHALL BE BASED ON THE EXTERIOR ELEVATION DRAWING.  
B. EXTERIOR ELEVATION SHALL BE BASED ON THE EXTERIOR ELEVATION DRAWING.  
C. EXTERIOR ELEVATION SHALL BE BASED ON THE EXTERIOR ELEVATION DRAWING.



2 BUILDING B ELEVATION - NORTH OBLIQUE  
1/8" = 1'-0"



1 BUILDING B ELEVATION - NORTH  
1/8" = 1'-0"



3 BUILDING B ELEVATION - SOUTH  
1/8" = 1'-0"



4 BUILDING B ELEVATION - EAST  
1/8" = 1'-0"



5 BUILDING B ELEVATION - WEST  
1/8" = 1'-0"

PRELIMINARY  
S&B ARCHITECTS, INC.  
ARCHITECT  
10000 W. CENTRAL EXPRESSWAY, SUITE 100  
DALLAS, TEXAS 75243  
TEL: 214.416.1111  
WWW.S&BARCHITECTS.COM

SILVER DESERT ESTATES - BUILDING B

CONCEPTUAL DESIGN  
BUILDING  
ELEVATIONS  
AB303

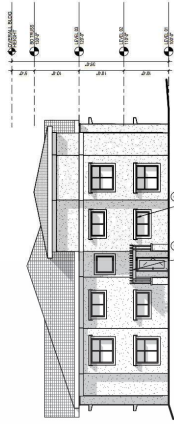




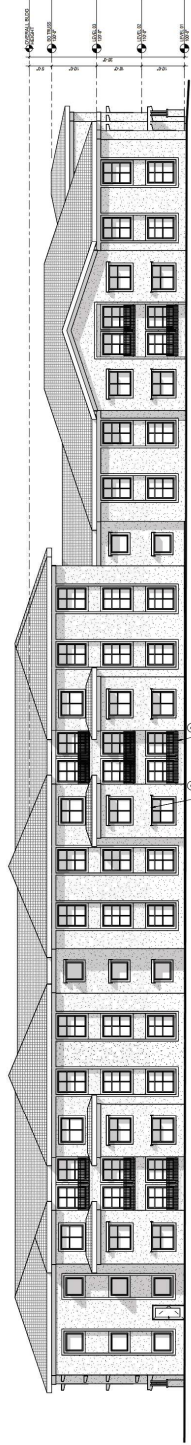
GENERAL NOTES - EXTERIOR ELEVATION  
A. EXTERIOR ELEVATION SHALL BE BASED ON THE EXTERIOR ELEVATION  
B. EXTERIOR ELEVATION SHALL BE BASED ON THE EXTERIOR ELEVATION  
C. EXTERIOR ELEVATION SHALL BE BASED ON THE EXTERIOR ELEVATION

KEYED NOTES - EXTERIOR ELEVATION  
1. EXTERIOR ELEVATION  
2. EXTERIOR ELEVATION  
3. EXTERIOR ELEVATION

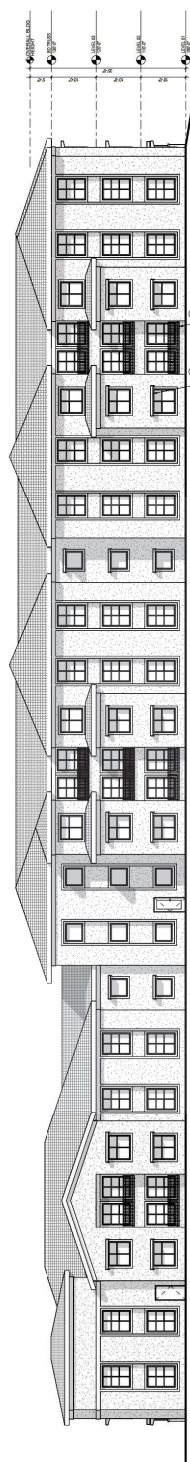
LEGEND - EXTERIOR ELEVATION MATERIALS  
1. EXTERIOR ELEVATION  
2. EXTERIOR ELEVATION  
3. EXTERIOR ELEVATION



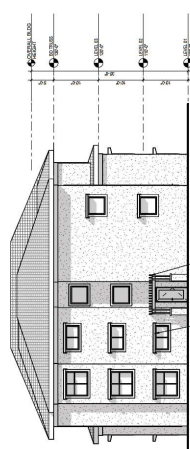
1 BUILDING C ELEVATION - NORTH  
1/8" = 1'-0"



2 BUILDING C ELEVATION - EAST  
1/8" = 1'-0"



3 BUILDING C ELEVATION - WEST  
1/8" = 1'-0"



4 BUILDING C ELEVATION - SOUTH  
1/8" = 1'-0"

SILVER DESERT ESTATES - BUILDING C

CONCEPTUAL DESIGN  
BAM BUILDING  
ELEVATIONS  
AC301

24-0668  
12/20/2024

**GENERAL NOTES - EXTERIOR ELEVATION**

- ELEVATION NOTES APPLY TO AWE SERIES SHEETS. ALL OTHER NOTES MAY NOT OCCUR ON THIS SHEET AND DO NOT APPLY TO ANY OTHER SHEETS EXCEPT THOSE NOTED.
- BUILDING HEIGHT IS TAKEN TO TOP OF ROOFLINE GABLE.
- SPRINKLER SYSTEM, SEE CIVIL DRAWINGS.









## GENERAL NOTES - EXTERIOR ELEVATION

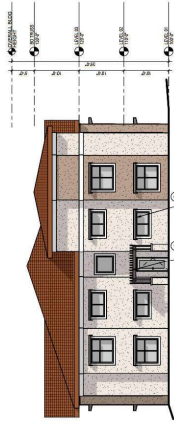
- A. ELUATION-EXTRACTED NOTES APPLY TO AIDE SERIES-BAGGIES. ALL EXTRACTED NOTES MAY NOT OCCUR ON THIS BAGGIE AND DO NOT APPLY TO ANY OTHER BAGGIES EXCEPT THOSE NOTES.
- B. BAGGIE-EXTRACTED IS TAKEN TO SUPPORT OF AIDE-EXTRACT BAGGIE.
- C. EXTRACTED-LINES VARY. SEE THE EXTRACTED.

## KEYWORD NOTES: EXTERIOR ELEVATION

- |   |                       |
|---|-----------------------|
| 1 | METAL THIEVES         |
| 2 | SOLAR SPACE           |
| 3 | ALBERT MALCOM MALBARD |

LEGEND - EXTERIOR ELEVATION MATERIALS

STUCO-COL-01	STUCO-COL-02	STUCO-COL-03	STUCO-COL-04	STUCO-COL-05	STUCO-COL-06	STUCO-FRM	TERAKOTA-ROOF
							



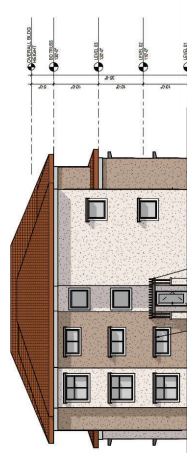
**1 BUILDING C ELEVATION - NORTH**  
1/8" = 1'-0"



2 BUILDING ELEVATION - EAST  
1/8" = 1'-0"



3 BUILDING ELEVATION - WEST  
1/8" = 1'-0"



**4 BUILDING C ELEVATION - SOUTH**  $1/8" = 1'-0"$

**B&W BUILDING  
ELEVATIONS  
AD301**

DESIGNED BY:  
2024 DEC 20  
2433014

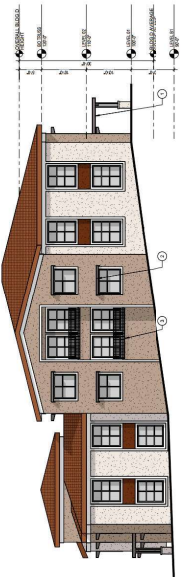
CHECKED BY:  
2024 DEC 20  
2433014

PROJECT NO:

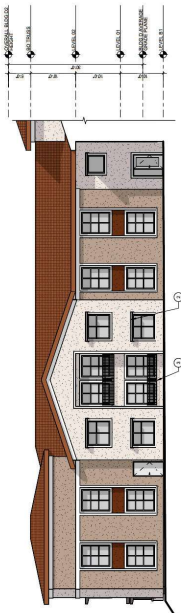


GENERAL NOTES - EXTERIOR ELEVATION  
A. EXTERIOR FINISHES TO BE SHOWN ON THIS ELEVATION  
B. EXTERIOR FINISHES TO BE SHOWN ON THIS ELEVATION  
C. EXTERIOR FINISHES TO BE SHOWN ON THIS ELEVATION

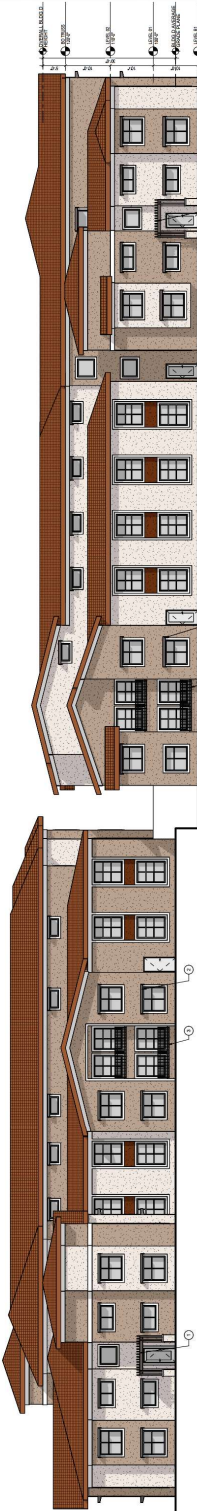
KEY NOTES - EXTERIOR ELEVATION  
A. EXTERIOR FINISHES TO BE SHOWN ON THIS ELEVATION  
B. EXTERIOR FINISHES TO BE SHOWN ON THIS ELEVATION  
C. EXTERIOR FINISHES TO BE SHOWN ON THIS ELEVATION



1 BUILDING D ELEVATION - NORTH 1  
1/8" = 1'-0"



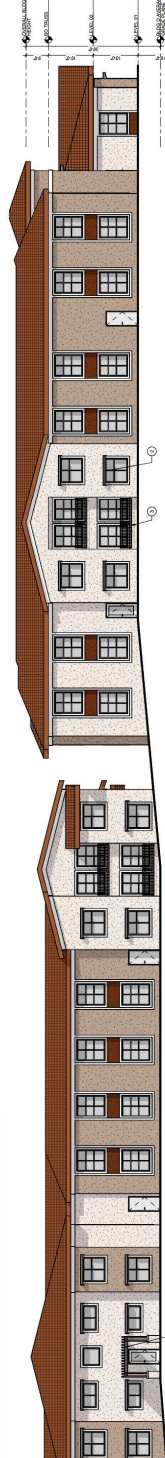
2 BUILDING D ELEVATION - NORTH 2  
1/8" = 1'-0"



3 BUILDING D ELEVATION - EAST  
1/8" = 1'-0"



4 BUILDING D ELEVATION - SOUTH  
1/8" = 1'-0"



5 BUILDING D ELEVATION - WEST  
1/8" = 1'-0"

SILVER DESERT ESTATES - BUILDING D

24-0668  
12/20/2024









## GENERAL NOTES - EXTERIOR ELEVATION

- NOTES

## KEYED NOTES - EXTERIOR ELEVATION

- METAL THIEVES  
SOLAR SPACE  
JULIET BALCONY TRAILING

LEGEND - EXTERIOR ELEVATION MATERIALS

SU-600-000.00.1	SU-600-000.00.2	SU-600-000.00.3	SU-600-000.00.4	SU-600-000.00.5	SU-600-000.00.6	SU-600 TBM	THERMOCUT™ ACP-960 TL-E



BUILDING E ELEVATION - EAST



BUILDING E ELEVATION - NORTH

24-0668  
12/20/2024





**GENERAL NOTES - EXTERIOR ELEVATION**

A. EXTERIOR ELEVATION SHALL BE BASED ON THE EXTERIOR FINISHES AND MATERIALS LISTED IN THE SPECIFICATIONS.

B. EXTERIOR ELEVATION SHALL BE BASED ON THE EXTERIOR FINISHES AND MATERIALS LISTED IN THE SPECIFICATIONS.

C. EXTERIOR ELEVATION SHALL BE BASED ON THE EXTERIOR FINISHES AND MATERIALS LISTED IN THE SPECIFICATIONS.

**KEYED NOTES - EXTERIOR ELEVATION**

1. EXTERIOR ELEVATION SHALL BE BASED ON THE EXTERIOR FINISHES AND MATERIALS LISTED IN THE SPECIFICATIONS.

2. EXTERIOR ELEVATION SHALL BE BASED ON THE EXTERIOR FINISHES AND MATERIALS LISTED IN THE SPECIFICATIONS.

3. EXTERIOR ELEVATION SHALL BE BASED ON THE EXTERIOR FINISHES AND MATERIALS LISTED IN THE SPECIFICATIONS.

**LEGEND - EXTERIOR ELEVATION MATERIALS**

Material	Color
Concrete	Light Gray
Brick	Red
Stucco	Light Tan
Stone	Dark Tan
Wood	Dark Brown
Roof	Dark Brown



2 BUILDING F ELEVATION - NORTH OBLIQUE  
1/8" = 1'-0"



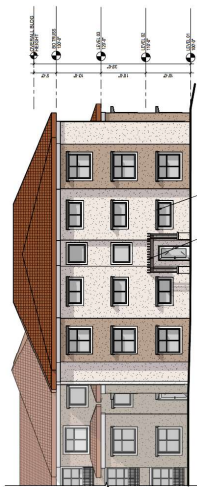
1 BUILDING F ELEVATION - NORTH  
1/8" = 1'-0"



3 BUILDING F ELEVATION - WEST OBLIQUE  
1/8" = 1'-0"



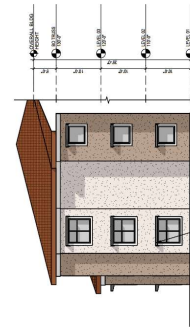
5 BUILDING F ELEVATION - SOUTH  
1/8" = 1'-0"



4 BUILDING F ELEVATION - WEST  
1/8" = 1'-0"



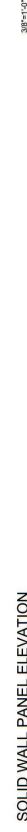
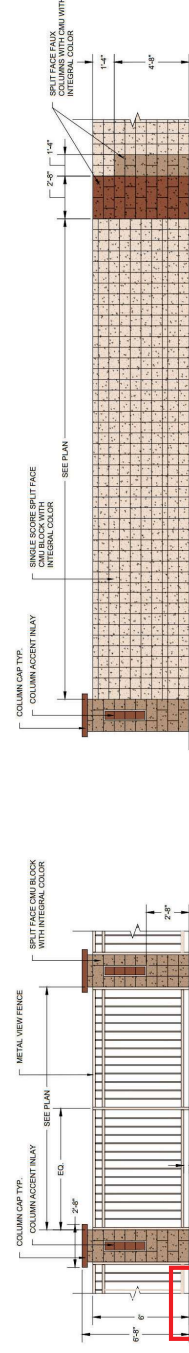
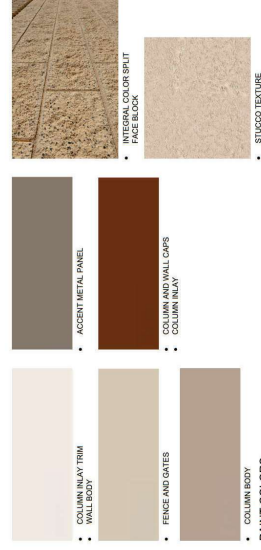
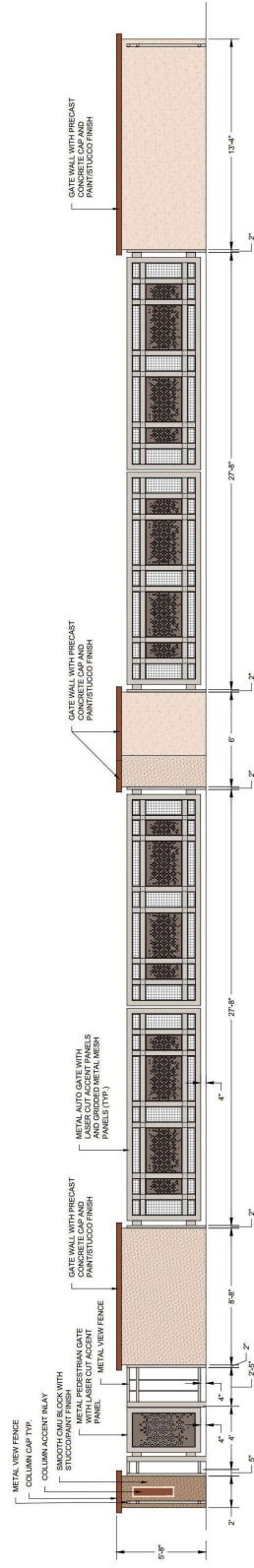
6 BUILDING F ELEVATION - EAST  
1/8" = 1'-0"



7 BUILDING F ELEVATION - EAST OBLIQUE  
1/8" = 1'-0"

24-0668  
12/20/2024





**LAGE**  
design

314 S. WATER STREET  
SUITE 120  
HENDERSON, NV 89015

TEL. (702) 479-5225  
WWW.LAGEDSIGNINC.COM

DBE + WBE

**SILVER DESERT ESTATES**  
HICKAM AVENUE and JORDANVILLE STREET  
CITY OF LAS VEGAS

12/19/2024 24070