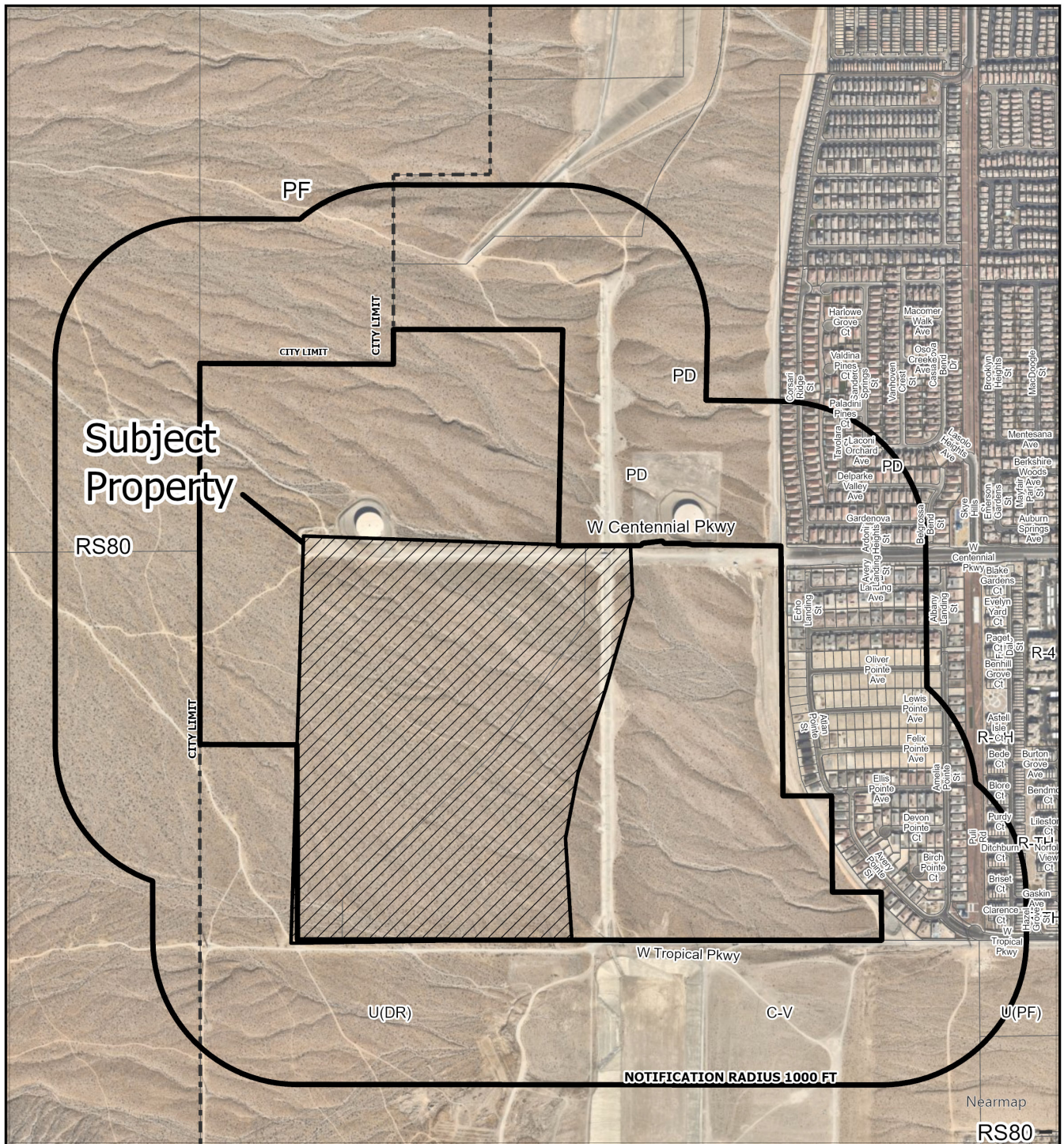


CASE: 25-0036-TMP1

RADIUS: 1000 FEET

ZONING OF SUBJECT PROPERTY: PD (PLANNED DEVELOPMENT)
 [ML (MEDIUM LOW RESIDENTIAL - SKYE SUMMIT)
 SPECIAL LAND USE DESIGNATION] [L (LOW RESIDENTIAL - SKYE SUMMIT) SPECIAL LAND USE DESIGNATION]



CASE: 25-0036-TMP1

RADIUS: 1000 FEET

ZONING OF SUBJECT PROPERTY: PD (PLANNED DEVELOPMENT)
 [ML (MEDIUM LOW RESIDENTIAL - SKYE SUMMIT)
 SPECIAL LAND USE DESIGNATION] [L (LOW RESIDENTIAL - SKYE SUMMIT) SPECIAL LAND USE DESIGNATION]

0 240 480 960
 Feet

