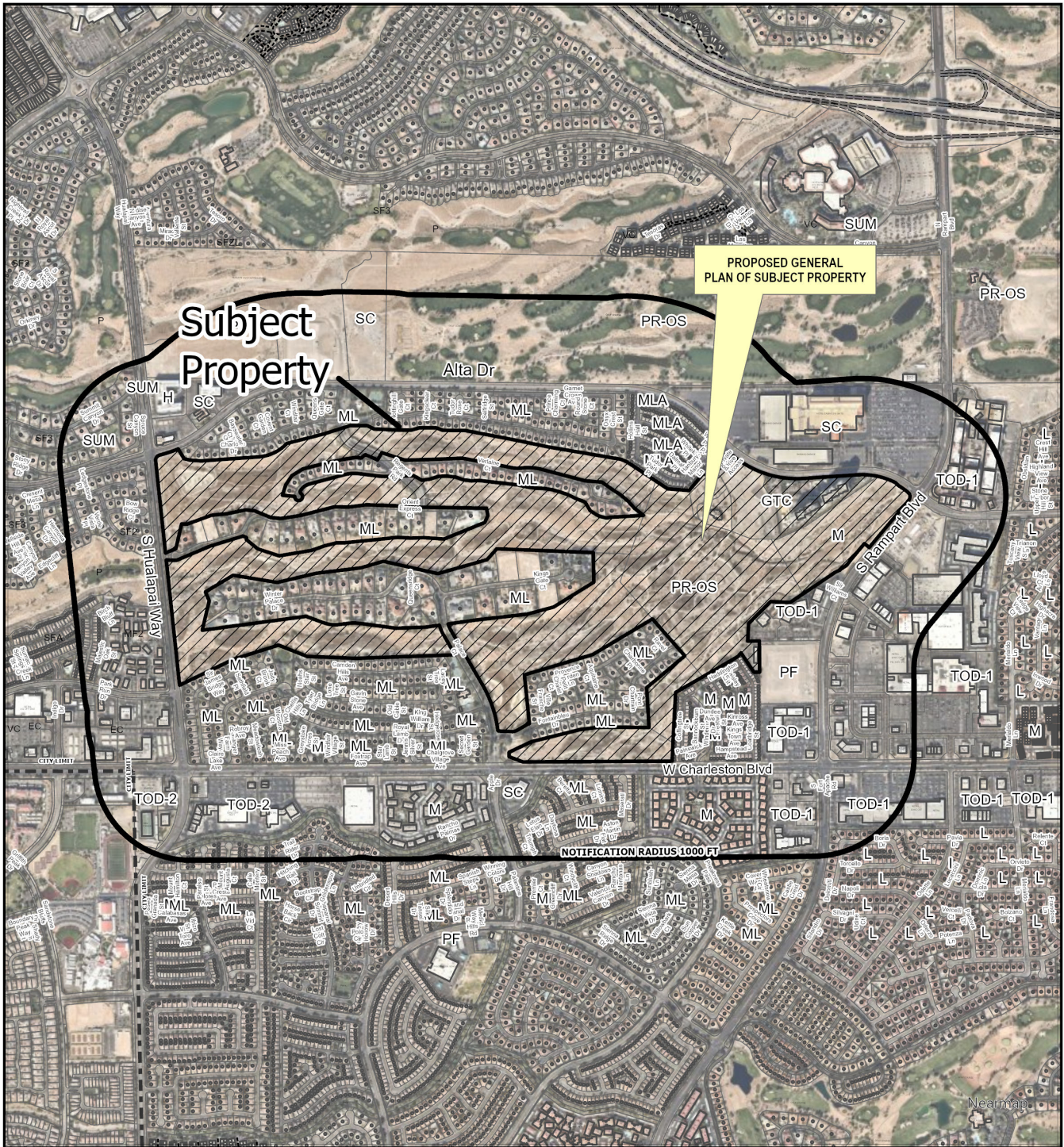


CASE: 24-0629-GPA1

RADIUS: 1000 FEET

GENERAL PLAN OF SUBJECT PROPERTY: GTC (GENERAL TOURIST COMMERCIAL); M (MEDIUM DENSITY RESIDENTIAL) AND PR-OS (PARKS / RECREATION / OPEN SPACE)

PROPOSED GENERAL PLAN OF SUBJECT PROPERTY: PCD (PLANNED COMMUNITY DEVELOPMENT))



CASE: 24-0629-GPA1

RADIUS: 1000 FEET

GENERAL PLAN OF SUBJECT PROPERTY: GTC (GENERAL TOURIST COMMERCIAL); M (MEDIUM DENSITY RESIDENTIAL) AND PR-OS (PARKS / RECREATION / OPEN SPACE)

PROPOSED GENERAL PLAN OF SUBJECT PROPERTY: PCD (PLANNED COMMUNITY DEVELOPMENT))