

Amendment No. 1 to
Cooperative Agreement No. NM541-83-010

This Amendment is made and entered into on _____, between the State of Nevada, acting by and through its Department of Transportation, hereinafter referred to as the "STATE", and the City of Las Vegas, hereinafter referred to as the "CITY".

WITNESSETH:

WHEREAS, on March 11, 1985, the parties entered into Agreement No. NM541-83-010 to define roles and responsibilities for maintenance, reconstruction, and improvements of certain CITY roadways in Clark County; and

WHEREAS, construction and maintenance of Interstate Route 515 (I-515) through the CITY was not contemplated as part of the original Agreement No. NM541-83-010; and

WHEREAS, the Agreement must be amended to correct certain language to include the determination of maintenance roles and responsibilities for this portion of I-515; and

WHEREAS, the parties hereto desire to make certain amendments to Agreement No. NM541-83-010.

NOW, THEREFORE, the parties agree as follows:

1. Section 3, Article A, Paragraph (iv), is amended by deleting it in its entirety and inserting in its place:
"To be responsible for maintaining the portions of the roadways designated in Exhibits "A" and "B" as follows:
 - i. Improved roadways shall be from back of curb to back of curb;
 - ii. Unimproved roadways shall be the right-of-way boundaries.

By this provision, the STATE specifically does not assume maintenance responsibility for sidewalks, landscaping, lighting, signalization, or other non-pavement related activity, regardless of the STATE's ownership of the underlying right-of-way, which activities shall remain the sole responsibility of the CITY, except as noted below.

Where the Charleston Boulevard arterial right-of-way intersects the I-515 limited access right-of-way at the Charleston Boulevard interchange, the STATE shall assume maintenance responsibility for landscaping at the interchange as shown on Exhibit "D" – I-515 and Charleston Blvd., Maintenance Agreement, attached hereto and incorporated herein by reference as part of this Agreement."

[LEFT BLANK INTENTIONALLY AND SIGNATURES ON NEXT PAGE]

2. All other provisions of Agreement No. NM541-83-010 dated March 11, 1985, shall remain in full force and effect as if fully set forth herein.

IN WITNESS WHEREOF, the above-named parties have hereunto set their hands and executed this Amendment on the date first written above.

CITY OF LAS VEGAS

STATE OF NEVADA, acting by and through
its DEPARTMENT OF TRANSPORTATION

Carolyn G. Goodman, Mayor Date

Director Date

Attest:

Approved as to Legality and Form:

LuAnn D. Holmes
City Clerk

Deputy Attorney General

Approved as to Form:



John S. Ridilla 7/19/23
John S. Ridilla
Deputy City Attorney

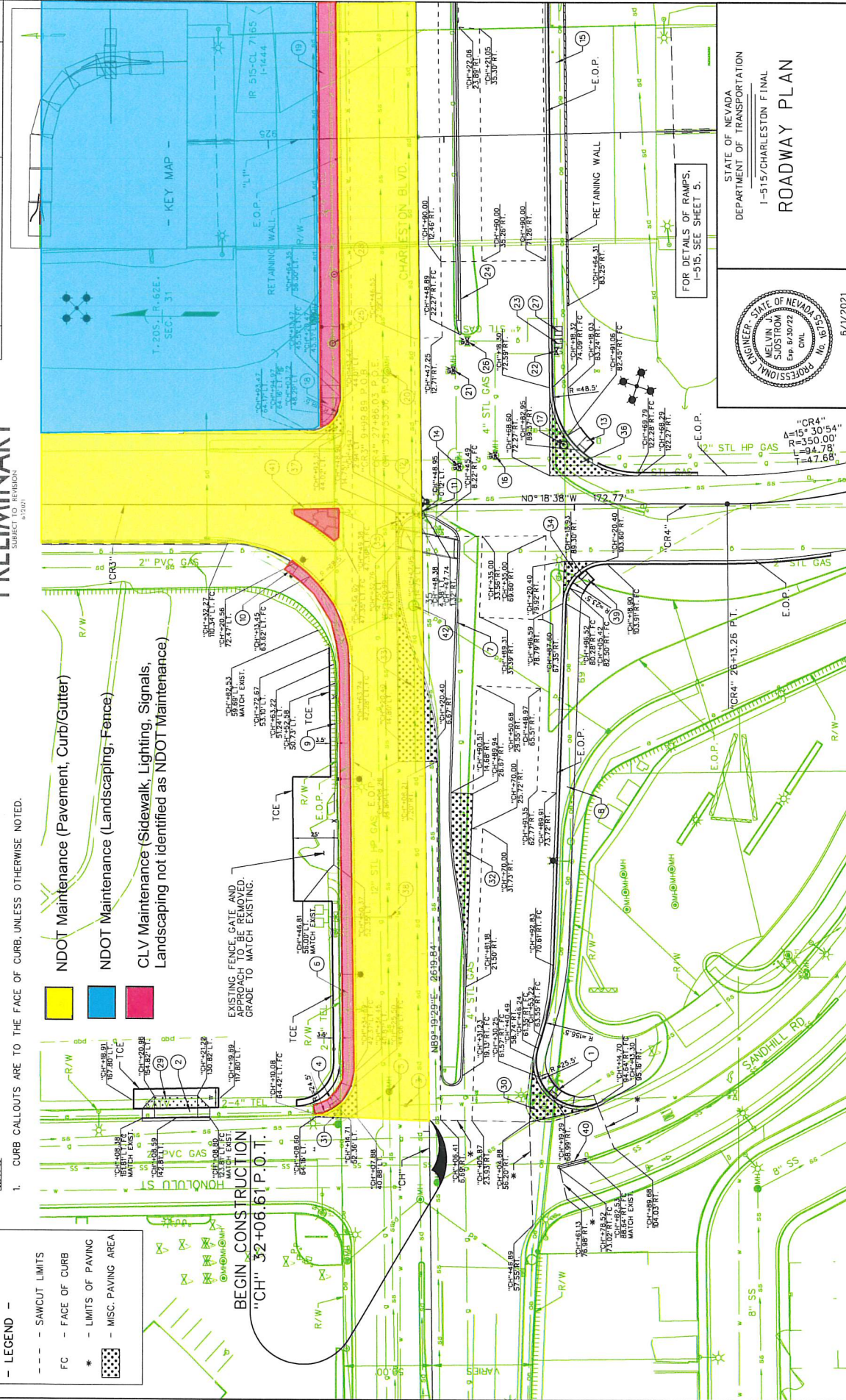
SUBJECT TO REVISION

STATE	PROJECT NO.	COUNTY	SHEET NO.
NEVADA	SPSR-0159 (018)	CLARK	12

1. CURB CALLOUTS ARE TO THE FACE OF CURB, UNLESS OTHERWISE NOTED.

- | Color | Category |
|--------|--|
| Yellow | NDOT Maintenance (Pavement, Curb/Gutter) |
| Blue | NDOT Maintenance (Landscaping, Fence) |
| Pink | CLV Maintenance (Sidewalk, Lighting, Signal)
Landscaping not identified as NDOT Maintenance |

BEGIN CONSTRUCTION
"CH" 32+06.61 P.O.T.



STATE OF NEVADA
DEPARTMENT OF TRANSPORTATION
I-515/CHARLESTON FINAL
ROADWAY PLAN



6/1/2021

elisa

STATE	PROJECT NO.	COUNTY	SHEET NO.
NEVADA	SPSR-0159 (018)	CLARK	13

PRELIMINARY

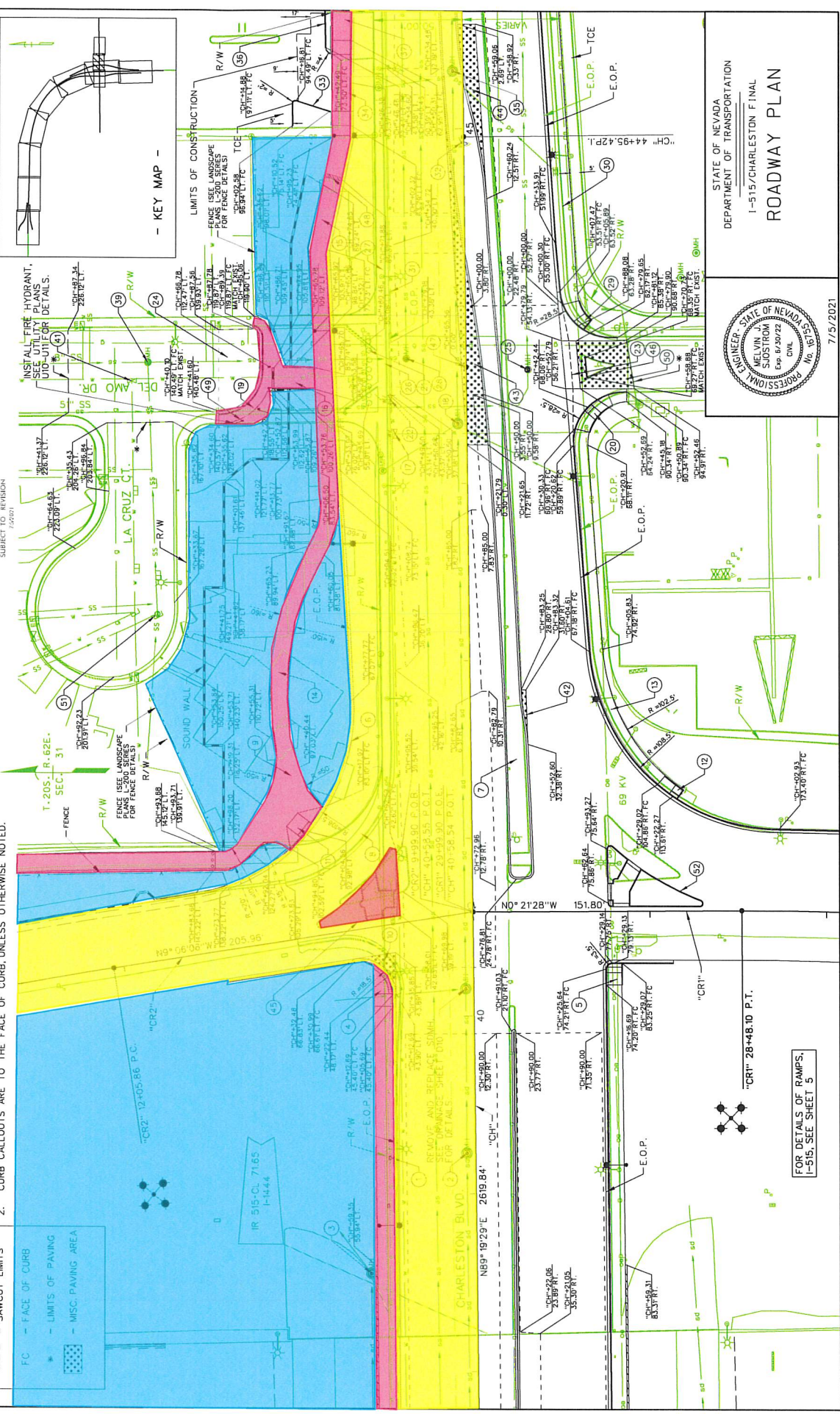
SUBJECT TO REVISION
7/29/21

NOTES:

1. SEE UTILITY SHEETS UG-411 FOR UTILITY DESIGN INFORMATION.
2. CURB CALLOUTS ARE TO THE FACE OF CURB, UNLESS OTHERWISE NOTED.

LEGEND -

- FC - FACE OF CURB
- - SAWCUT LIMITS
- * - LIMITS OF PAVING
- - MISC. PAVING AREA



STATE OF NEVADA
DEPARTMENT OF TRANSPORTATION
I-515/CHARLESTON FINAL
ROADWAY PLAN



7/5/2021

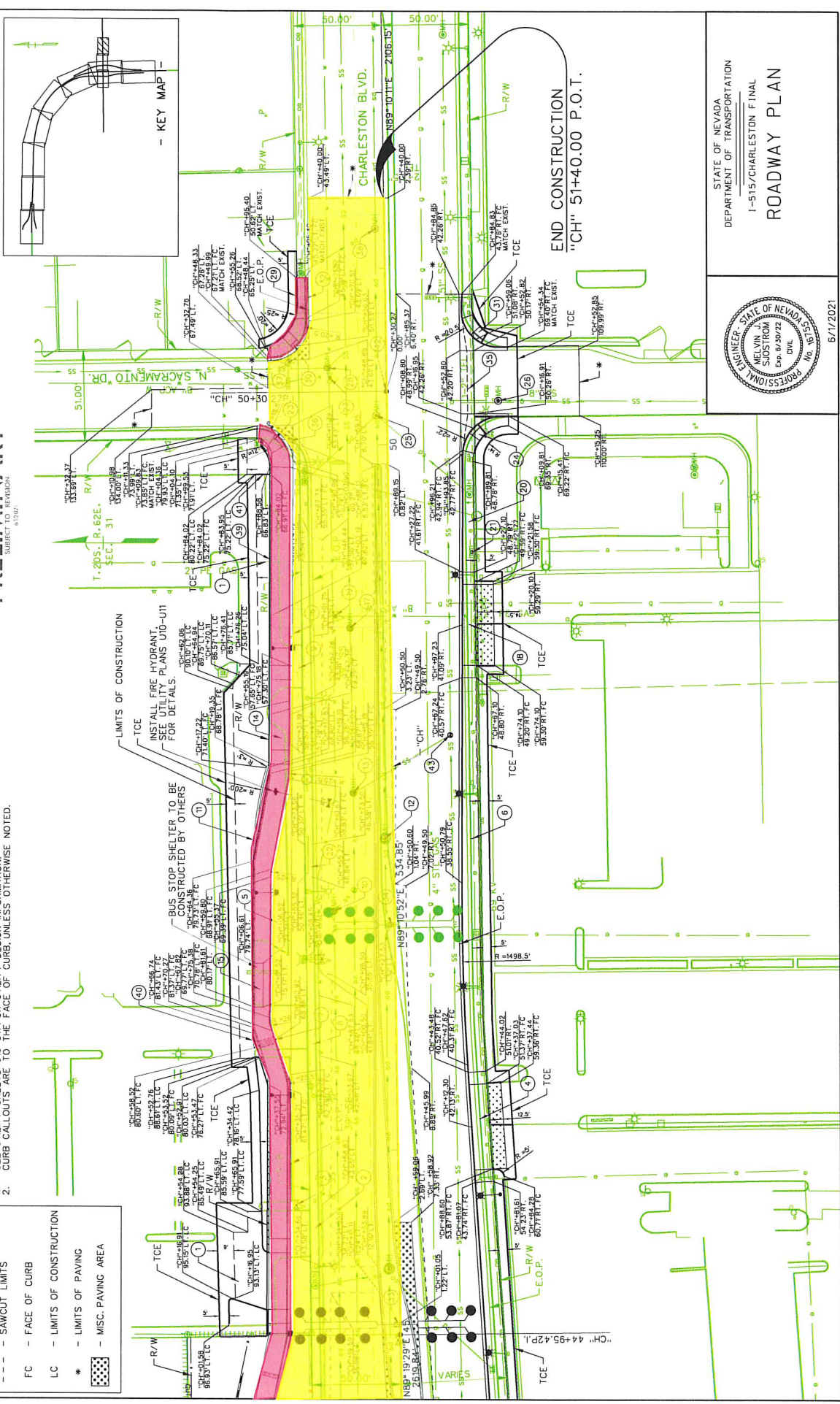
FOR DETAILS OF RAMP,
I-515, SEE SHEET 5

STATE	PROJECT NO.	SHEET NO.
NEVADA	SPSR-0159 (018)	14
COUNTY	CLARK	

PRELIMINARY

- NOTES:
1. SEE UTILITY SHEETS U10-U11 FOR UTILITY DESIGN INFORMATION.
 2. CURB CALLOUTS ARE TO THE FACE OF CURB, UNLESS OTHERWISE NOTED.

—	LEGEND —
---	SAWCUT LIMITS
FC	FACE OF CURB
LC	LIMITS OF CONSTRUCTION
*	LIMITS OF PAVING
[Pattern]	MISC. PAVING AREA



STATE OF NEVADA
DEPARTMENT OF TRANSPORTATION
1-515/CHARLESTON FINAL
ROADWAY PLAN

